

Artworks by Alan Dedman at Studio1.1 Shoreditch, London

Alan Dedman is exhibiting work at Studio 1.1 in Shoreditch during late November, early December this year. The show lasts for one week; consisting of paintings and drawings - conventional nudes and portraits made from observation and 'automated action painting' (spin paintings) with figurative imagery worked into them.



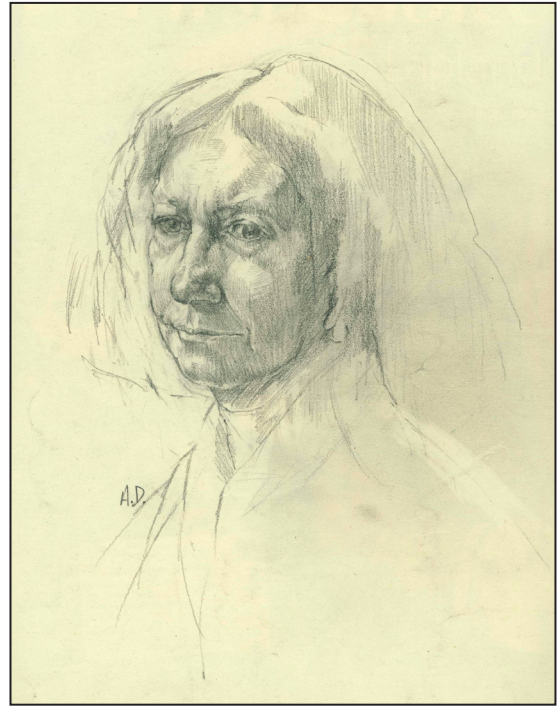
In the 90s Dedman 'funked off' to the West Country to become a lumberjack - after years of felling (and planting) trees he resumed his practise as a visual artist. Dedman sought advice from an old dame of British painting - Olwyn Bowey RA. Olwyn figured in Alan's education both at St. Martins and the Royal Academy Schools.



The former partner of Carel Weight - Olwyn is one of our few existing links with another kind of London, not quite 'the London Nobody Knows' - but a scene born of the swinging sixties and an altogether more democratic society. "She gave direction and focus to my efforts. I abandoned a dilatory hotch-potch of landscapes, cats, still-lives and the odd portrait, for studies of the human form - beautiful women, strong characters and the work of modern masters".

For one week: 28th of November 'til the 4th of December 2017

“I am a physical person, not suited to sedentary work, offices or full-time city life. Traditional painting is too plodding and stodgy for me. At the Royal Academy Schools a few of us strayed from the path; I was fortunate to have my interests indulged at this point. Later, whilst I was using a chain-saw to cut timber and Damien Hirst was (allegedly) using one to splice cattle, I took a leaf from his book. With help from a friend we built a spin painting contraption. Currently I’m on Mk IV of these - and have probably gained as much skill and experience as Hirst and his assistant, Katherine Howard”.



At Studio 1.1 you can see portraits and nudes painted from life in the tradition of the Royal Academy Schools; contrasted with the same subject matter, worked through and into ‘automated action painting’.

“I’ve done hundreds of spin paintings, experimenting with materials and the physicality of the process. I’ve looked at how figuration can be integrated with the activity - working from life in conjunction with mechanical painting methods. This takes the process further and exposes (hopefully) post-modern ennui and the potential cynicism and emptiness of the YBA aesthetic. Art doesn’t always have to be made in London - the social buzz and effervescence of the capital help, but then so does fresh air”.



Artworks by Alan Dedman

Studio 1.1
57a, Redchurch Street,
Shoreditch,
London E2 7DJ.

12-6 pm *or by appointment*
www.studio1-1.co.uk

www.alan-dedman-artist.co.uk/wordpress