

WATERCOLOURS

WORKS ON PAPER

art fair

2 – 5 FEBRUARY 2012

SCIENCE MUSEUM LONDON SW7

drawings • watercolours • prints • photographs

Press Release

December 2011

The Specialist Fair for Every Type of Art on Paper

drawings • watercolours • prints • posters • photographs

The Watercolours + Works on Paper Fair returns to the stylish and spacious Level 2 Galleries at the Science Museum, South Kensington, London from 2 - 5 February 2012. The 2012 fair brings together an impressive range of art on paper exhibited by leading art dealers from across the UK.

This eclectic and lively fair presents all types of art on paper from the 16th Century to the modern day. Works include original drawings, watercolours, prints, photographs and posters, all of which are for sale, with prices starting at £500 rising to £100,000.

The fair gives visitors the chance to see works by well known artists from earlier eras for example, a lithograph by Odilon Redon (1840 -1916) 'Lueur Précaire, une Tête à l'Infini suspendu' (Precarious glimmer, a Head suspended in Infinity) for £1,750 and a soft-ground etching by Pierre Auguste Renoir (1841-1919) 'La Dance à la Campagne' (Dancing in the Country) for £10,000. Both are exhibited by Elizabeth Harvey-Lee.

A rare watercolour by John Absolon (1815 -1895) of 'The Transept from the South Gallery, The Great Exhibition of 1851' for £12,500 will be one of the highlights of the earlier works presented by Guy Peppiatt Fine Art.

Newcomers this year include, Thompson's Galleries showing David Sawyer's watercolours of Cambridge, Mary Deeming, presenting Japanese woodblock prints, Orme 11 showing watercolours by contemporary Turkish artist Ali Yanya, and the Bristol based Alexander Gallery exhibiting watercolours by Scottish artist Peter Graham and other new contemporary talent.



Odilon Redon (1840 -1916)
Lithograph £1,750
Elizabeth Harvey-Lee



Pierre Auguste Renoir (1841-1919)
Soft-ground etching £10,000
Elizabeth Harvey-Lee



John Absolon (1815-1895)
Watercolour, £12,500
Guy Peppiatt Fine Art



Ali Yanya (b. 1963)
Watercolour, £800
ORME 11



David Sawyer (b. 1961)
Watercolour, £750
Thompson's Galleries



Peter Graham (b. 1959)
Watercolour, £1,825
Alexander Gallery



Kawase Hasui (1883 -1957)
Woodblock print, £7,700
Mary Deeming

Loan Exhibition:



James Nasmyth (1808 - 1890)
Sketch of Lunar Crater Plato 1844



John Russell, RA
The Telescopic Study of the Moon 1796

'THE MOON OBSERVED'

Drawings by engineer, astronomer and artist James Nasmyth (1808-1890) are the starting point for this loan exhibition of rarely seen pictures from the Science Museum's archives. Selected works by several artists reveal their shared fascination with the surface of the moon and show how they attempted to record it on paper.

The exhibition will be held alongside the Watercolours + Works on Paper Fair, Level 2, Science Museum, 2 - 5 February 2012.

In addition to the major focus on Nasmyth, the exhibition features works by other artists who recorded their observations in drawing, or who pursued imaginative lines of enquiry, as they tried to capture some of the mystery surrounding the moon that has gripped many observers through the centuries.

The exhibition gradually leads the viewer into the 20th Century and ends with the iconic moment of astronauts walking on the moon, as interpreted by Sandra Lawrence in her screenprint "One Small Step for a Man - One Giant Leap for Mankind of 1991-1994."

This exhibition is free to the public and the works are on loan, not for sale.

Fair Programme



Artist in Residence from City & Guilds Art School "A Visual Blog"



Following on from the success of last year's Artist in Residence competition with the Prince's Drawing School, the Fair is collaborating with the City & Guilds Art School to find a new resident artist for the 2012 fair. The residency gives a graduate the chance to create "a visual blog" from the event, recording forgotten moments and aiming to capture the spirit of the fair. The role of resident artist suits a confident person who enjoys being in the spotlight and interacting with the public and exhibitors.

All the graduates who apply will have their work exhibited, after assessment by a panel of Judges: Heather Mayfield, Deputy Director of the Science Museum, Richard Cork, Art Historian and Art Critic, Linda Blackstone, Contemporary Art Dealer, and Lucy Russell, Fair Director.



The project focuses on drawing, encouraging the artist to develop a body of work drawing alongside the event team. They will work in the space from the moment the team come on site and take over the empty galleries, witnessing the stand builders at work and exhibitors hanging their pictures. They will draw within the fair whilst the public are visiting and stay to record the final hours as the fair is dismantled and the space is returned as an empty venue to the Museum.

The artist in residence will give a talk about their work on Saturday 3 February at 3 pm and will lead a tour selecting aspects of the Fair that have inspired their work.

Watercolours + Works on Paper Fair 2 - 5 February 2012

Press Release - continued.

The fair features expert Art Dealers including: Abbott & Holder, Alexander Gallery, ArtsHouse, George Babbington Art on Paper, John Barkes, Baron Fine Art, The Linda Blackstone Gallery, Camburn Fine Art, Marcus Campbell Art Books, The Canon Gallery, Sarah Colegrave, Mary Deeming, Caroline Gee, Gray Modern & Contemporary, ASAL Partners, Julian Hartnoll, Elizabeth Harvey-Lee, Four Four, Gwen Hughes, JHW Fine Art, John Iddon Fine Art, Francis Iles Gallery, Jack Fine Art, Jennings Fine Art, Kendalls Fine Art, Kaye Michie, Harry Moore-Gwyn, National Open Art Competition, Newman Fine Art, Charles Nugent, ORME 11, Guy Peppiatt Fine Art, The Rae-Smith Gallery, John Robertson Fine Paintings, Sim Fine Art, Thompson's Galleries, Vera Schuhmacher Fine Art, West Two Gallery and Wolseley Fine Arts.



M J Forster (b. 1975)
Watercolour, £850
ArtsHouse



John Downman (1750-1824)
Watercolour, £5,500
Guy Peppiatt Fine Art



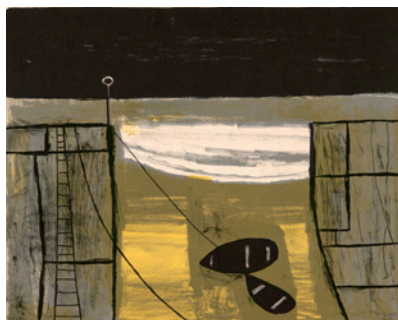
Honoré Daumier (1808-1879)
Lithograph, £2,000
Elizabeth Harvey-Lee



John Hassall (1868-1948)
Printed poster, £900
The Rae-Smith Gallery



Edward Bawden (1903-1999)
Linocut, £2,600
Gwen Hughes



William Scott RA (1913-1989)
Lithograph, £12,000
Gray Modern & Contemporary Art



Horace Mann Livens (1862-1936)
Gouache and charcoal, £1,800
Sim Fine Art



Lionel Wendt (1900-1944)
Gelatin Silver Print, £2,000
ASAL Partners



Simon Palmer (b. 1956)
Watercolour, £3,750
Harry Moore-Gwyn



Edward Horace Thompson (1879-1949)
Watercolour, £2,450
Charles Nugent Fine Art

Notes to Editors:

- The Watercolours + Works on Paper Fair opens to the public on Thursday 2 February and runs until Sunday 5 February 2012, at the Science Museum, South Kensington, London SW7 2DD. The opening preview on Wednesday 1 February is by invitation only, 3 - 9 pm.

Visitor information

- For information visit www.worksonpaperfair.com or call 01798 861 815.
- The fair opens daily at 11 am. Closes: Thurs 9 pm; Fri, Sat and Sun 6 pm.
- Entry to the Loan Exhibition is free. Fair tickets £15. Free admission for children under 14, who must be accompanied by an adult.
- The Fair's unique catalogue, £8, contains a set of over 60 art postcards selected from each gallery.
- Talks by leading art experts take place on Fri, Sat and Sun at 3pm.
- In-house Champagne Bar and Café with live music performances.
- Public Transport: South Kensington tube, with easy access from the main Exhibition Road entrance of the Museum via a covered walkway. Bus numbers: Routes 14, 49, 70, 74, 345, 360, 414, C1 and 430 stop near to the Science Museum at South Kensington Station.
- Disabled access available.

For more information and high res images, contact Jemma Gilpin;
press@worksonpaperfair.com or call 01798 861 815.

www.worksonpaperfair.com
f [WatercoloursWorksonPaperFair](https://www.facebook.com/WatercoloursWorksonPaperFair)



The Science Museum's collections form an enduring record of scientific, technological and medical change from the past. Aiming to be the best place in the world for people to enjoy science, the Science Museum makes sense of the science that shapes our lives, sparking curiosity, releasing creativity and changing the future by engaging people of all generations and backgrounds in science, engineering, medicine, technology, design and enterprise. www.sciencemuseum.org.uk
Science Museum, Exhibition Road, London, SW7 2DD. Open daily 10.00 to 18.00, except 24-26 December.
www.sciencemuseum.org.uk / 0870 870 4868 Twitter - @sciencemuseum Facebook - www.facebook.com/sciencemuseumlondon