

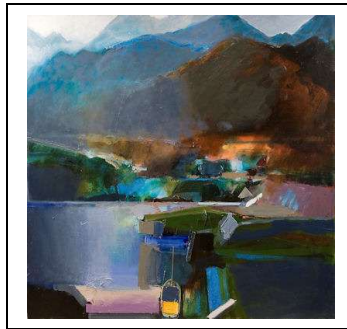
**DAVID PRENTICE**

**SKYE AND THE ROAD TO THE ISLES**

**28<sup>th</sup> APRIL – 19<sup>th</sup> MAY 2012**

**The John Davies Gallery, Moreton-in-Marsh, North Cotswolds**

David's first visit to the Scottish Highlands dates back to 1987, but this more recent visit, to see his daughter and her family, reflects his journey from Glen Coe on the mainland through to the Isle of Skye. The title of this exhibition can be found in the traditional Scottish song ***The Road to the Isles*** which is echoed in the title of the show. Some of the paintings are relatively topographical, others more impressionist, even abstract. This allows the viewer to share with the artist his experience of making the imaginative transformation to a sense of a real space which has light, space and form.



*Skye Boat*, pastel 40 x 43 in

**A colour catalogue is available @ £15 from  
The John Davies Gallery, Fosseway Business Park, Moreton-in-Marsh, GL56 9NQ.  
Tel 01608 652255 or alternatively by complimentary PDF  
E-mail: [info@johndaviesgallery.com](mailto:info@johndaviesgallery.com) Website: [www.johndaviesgallery.com](http://www.johndaviesgallery.com)**