

'THE UNMAPPED EDGE'

NEW WORK BY ADRIAN ECKERSLEY, ALISON CHAPLIN & ROB LOVELL

30 August – 5 September 2010, daily 11am-8pm

Private Views – 30 & 31 August, 6-9pm

54 THE GALLERY

54 Shepherd Market, London, W1J 7QX

Three exciting London artists bring their work to the West End.

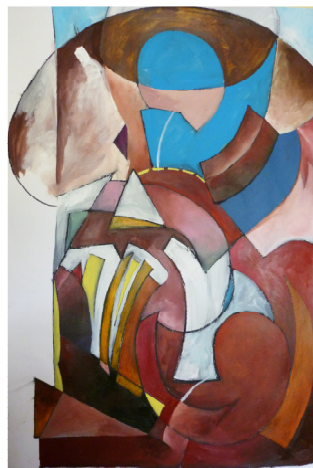
With very different styles, but the same energy and strength, **Adrian Eckersley**, **Alison Chaplin** and **Rob Lovell** showcase their recent work in an exhibition in the renowned Shepherd Market, Mayfair.



'Shady Beech' Alison Chaplin



'Hitchcock Hotel' Adrian Eckersley



'This Lofty Discourse' Rob Lovell

Adrian is fascinated by the strangeness of the familiar landscapes that we inhabit. His paintings show outer suburbs, motorways at night, empty shopping malls...

Adrian Eckersley – www.outscapes.co.uk

Alison's new paintings are concerned with the magical quality of the light as it plays upon the branches and trunks of the trees of Epping Forest.

Alison Chaplin – www.alisonchaplinart.com

Rob's paintings seek to convey a sense of time and place using abstraction and colour out of a tradition of English landscape with a soft interweaving of narrative and memory.

Rob Lovell – www.roblovell.co.uk

Contact: Bryony Chaplin

Tel: 07812 174 535

Email: bryony722@gmail.com