

**AUGUST 2017**

# GALLERIES

**august**  
**open** 59 NEW SHOWS  
**review** 10 EXHIBITIONS  
**focus** EDINBURGH & SCOTLAND

**previews | news | listings | new shows | maps | [galleries.co.uk](http://galleries.co.uk)**

# GALLERIES

# GALLERIES CONTENTS AUGUST 2017

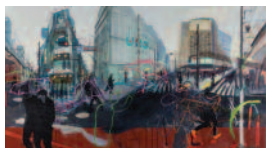
## regular FEATURES

Articles: gallery names in bold see index

<b>New Shows Diary</b> – exhibition opening days	page 4
<b>Focus</b> – north of the border	6
<b>Round up</b> – shows & art news	10
<b>Open Studios</b> – scotland	11
<b>National Galleries</b> – show listings	13
<b>Thumbnails</b> – short reviews	14,15,18,20,24,26,28
<b>Twitter</b> – the top tweet	21
<b>Artist Websites</b> – online art	42
<b>Artlinked in</b> – Jo Tuck	42
<b>Artist Index</b> – artists listed by gallery	43
<b>Gallery Specialisations</b> – general stock index	44
<b>Gallery Index</b> – dealers & services	46

## on the COVER

**Kate Downie** *Shimbashi (Hand)*  
acrylic & oil on canvas  
**Scottish Gallery** map 3  
editorial page 6



## LISTINGS KEY

\*ad see display \*pr press release on galleries.co.uk/pr

\*own art Arts Council interest free credit scheme member

Internet addresses in bold are linked via [www.galleries.co.uk](http://www.galleries.co.uk)

for art updates follow galleries magazine on @art\_mag or

[facebook.com/galleriesartist](https://www.facebook.com/galleriesartist)

## CONTACT US AT

advertising

[ads@galleries.co.uk](mailto:ads@galleries.co.uk)

listings

[listings@galleries.co.uk](mailto:listings@galleries.co.uk)

editorial

[ed@galleries.co.uk](mailto:ed@galleries.co.uk)

production

[studio@galleries.co.uk](mailto:studio@galleries.co.uk)

distribution

[distro@galleries.co.uk](mailto:distro@galleries.co.uk)

accounts & subscriptions

[accounts@galleries.co.uk](mailto:accounts@galleries.co.uk)

**Managing Editor & Publisher** Paul Hooper

**Features Editor** Nicholas Usherwood

**Scottish Features** Bill Hare **Sale Rooms** William Jackson

**Listings** Maggi Taylor **Production Editor** Hilary George

**Distribution** Jonathan Hooper

**Accounts & Subscriptions** Agnieszka Federowska

**Social Media** at [dot-relations.co.uk](http://dot-relations.co.uk)

## GALLERIES map pages

map/section

Principal cities & regions are covered by maps showing gallery locations

<b>Art Services</b> to the trade & public	section 29
<b>Bankside &amp; Southwark</b> – Waterloo, Tower Bridge	27
<b>Bath</b> – City Centre	13
<b>Bloomsbury/Fitzrovia</b> – Charlotte St, Windmill St	22
<b>Bristol</b> – City Centre	12
<b>Cardiff</b> – City Centre	5
<b>Chelsea &amp; Fulham</b> – King's Rd, Fulham Rd, Battersea	20
<b>City, Islington &amp; East End</b> – Upper St, Bethnal Grn	28
<b>Cork St</b> – Clifford St, Regent St	24
<b>Cornwall</b> – St Just to Bodmin	9
<b>Cotswolds</b> – Gloucestershire to Oxfordshire	8
<b>East Anglia</b> – Essex to Lincolnshire	16
<b>Edinburgh</b> – City Centre	3
<b>Galleries for Hire &amp; Sale</b> around the UK	section 30
<b>Glasgow</b> – City Centre	2
<b>Hampstead, St John's Wood, Camden</b> – Highgate	18
<b>Kensington &amp; Notting Hill</b> – High St, Westbourne Grove	19
<b>Knightsbridge &amp; Belgravia</b> – Old Brompton Rd, Victoria St	21
<b>Marylebone</b> – Baker St, Marylebone High St	23
<b>Mayfair</b> – New Bond St, Old Bond St, Cork St	24
<b>Midlands</b> – Shropshire to Birmingham	7
<b>New Bond St</b> – Bruton St, Davies St	24
<b>North England</b> – Cumbria to Derbyshire	4
<b>Old Bond St</b> – Albemarle St, Dover St	24
<b>Online Galleries</b> – operating on the internet	page 17
<b>St Ives</b> – Town Centre	10
<b>St James's</b> – Duke St, Bury St	25
<b>Scotland</b> – Borders to Highlands	1
<b>South East England</b> – Dorset to Kent	15
<b>South &amp; West London</b> – Richmond to Dulwich	17
<b>Thames Valley, Bucks &amp; Herts</b> – London area to Oxon	14
<b>Trafalgar Sq, Soho, Covent Gdn</b> – The Mall	26
<b>Wales</b> – Anglesey to Newport	6
<b>West Country</b> – Devon, Somerset, Dorset	11

Barrington Publications

Riverside Studios, 65 Aspenlea Road, London W6 8LH

Tel: 020 8237 1180 [www.galleries.co.uk](http://www.galleries.co.uk)

Volume XXXV No 3 August 2017 Issue 411 ISSN 0265-7511

# NEW ARTIST FAIR Summer Exhibition

8 to 10 September 2017

Friday Private View 6pm-9pm Open All Weekend 12pm-6pm

The Old Truman Brewery  
Off Ely's Yard, London E1 6QR

NEW  
ARTIST  
FAIR

NEWARTISTFAIR.COM

**UA** artists  
united society of

United Society of Artists

## 94<sup>th</sup> Open Exhibition

The Menier Gallery, 51 Southwark Street  
London SE1 1RU 5 – 9 September, 11am - 6pm

Artists working in all media are invited to enter up to 6 works  
at a submission fee of £12 per work.

Online submission deadline 10pm August 25<sup>th</sup>.  
Full details available at [www.the-ua.org.uk](http://www.the-ua.org.uk)

# NEW SHOWS DIARY

August

Number refers to map, unless otherwise indicated

## TUESDAY 1

Call for Entries, Columbia Threadneedle Prize - **Mall** - 26  
 Call for Entries, 154th Annual Open - **Royal Glasgow Institute** - 2  
 Call for Entries, United Society of Artists - **Menier** - 27  
 Graham A Hunter - **Graham Hunter** - 23  
 Hesketh Hubbard Art Society - **Mall** - 26  
 Vanessa Bowman - **Panter & Hall** - 26

## WEDNESDAY 2

Artists of the Tamar Valley - **Drawn To The Valley** - 11  
 Songlines XXIX - **Rebecca Hossack** - 22

## THURSDAY 3

Alberto Morrocco - **Scottish Gallery** - 3  
 Colin Lyall - **Water Street** - 4  
 Jacqueline Mina - **Scottish Gallery** - 3  
 Kate Downie - **Scottish Gallery** - 3  
 Lona Szalay - **Arusha** - 3  
 Martin Cooke - **Scottish Gallery** - 3  
 Philip Eglin - **Scottish Gallery** - 3  
 Seattle Art Fair - **Rebecca Hossack** - 22

## FRIDAY 4

Alicia France - **5th Base** - 28  
 Associate Members' Exhibition - **Penwith** - 10  
 Barry Kelly - **Brownston** - 11  
 Down by the Shore - **Lime Tree Long Melford** - 16  
 Jane Yates, Bob Devereux - **Penwith** - 10  
 John Cyrilas Williams - **King Street** - 6  
 Laima Dzigaite, Cathrine Holtet - **Birch Tree** - 3

## SATURDAY 5

Anna Somerville - **ggallery** - 3  
 Arts Festival 2017, Open Studios - **Pittenweem Arts Festival** - 1  
 Dominique Cameron - **Fidra** - 1  
 EWAAE 2017 - **Posk** - 17  
 Gallery Artists - **Woodbine** - 16  
 Julie Needham - **Woodbine** - 16  
 Peter Hayes - **Circle Contemporary** - 9

## SUNDAY 6

John Copnall - **Linden Hall Studio** - 15

## MONDAY 7

Educational August Workshops - **Mall** - 26  
 Nicholas Turner - **Bath Contemporary** - 13

## TUESDAY 8

In the Light of Surrealism 2 - **Gallery At Hastings Arts Forum** - 15  
 Jennie Ing - **Greenwich Printmakers** - 17  
 John Walsom - **Fountain** - 17

Lorrain Mailer, Sally Meakins - **Gallery At Hastings Arts Forum** - 15

## THURSDAY 10

Martin Pearce, Paul Wearing, Rachel Wood - **Contemporary Ceramics Centre** - 22

## FRIDAY 11

Julie Oldfield - **Town Mill** - 11  
 Open Studios - **Arran Open Studios** - 1  
 Peter Layton - **London Glassblowing Studio & Gallery** - 27  
 Summer Exhibition - **David Simon Contemporary** - 13

## SATURDAY 12

18th Anniversary Exhibition - **Lemon Street** - 9  
 Angie Lewin, Alex Malcolmson - **Twenty Twenty** - 7  
 Beyzanur Kaplan - **Posk** - 17

## WEDNESDAY 16

The Summer of Love - **Gallery Pangolin** - 8

## FRIDAY 18

Call for Entries - **D Contemporary** - 24  
 Chelsea Devine - **Town Mill** - 11

## SATURDAY 19

Asayo Kawase - **Posk** - 17

## SUNDAY 20

Matthew Wood - **Ffin Y Parc** - 6  
 Sharon Griffin - **Ffin Y Parc** - 6

## MONDAY 21

Endré Röder - **Bath Contemporary** - 13

## TUESDAY 22

Carol Grant, Carol Morgan - **Fountain** - 17

## THURSDAY 24

The Society of Feline Artists - **Llewellyn Alexander** - 27

## FRIDAY 25

Elaine Speirs - **Arusha** - 3  
 Tricia Scott, Lois Wakeman - **Town Mill** - 11

## SUNDAY 27

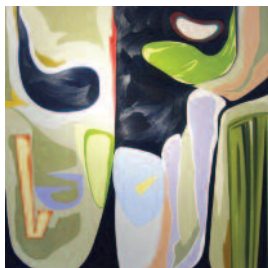
Brian Marsh - **Posk** - 17

## MONDAY 28

Mouss - **54 The Gallery** - 24

## TUESDAY 29

Joanna Irvin - **Greenwich Printmakers** - 17



from left

Murray Fredericks  
 'Mirror'  
 Hamiltons Gallery (see listing on map 24)

Martyn Jones  
 'Atelier - Aquifer VI' 2012  
 oil on canvas, 200 x 200cm  
 Flyn Y Parc Gallery (see listing on map 6)



**Angie Lewin &  
Alex Malcolmson**

12th Aug to 16th Sept 2017

**twenty twenty gallery**  
MUCH WENLOCK

01952 727952  
[www.twenty-twenty.co.uk](http://www.twenty-twenty.co.uk)

**TAL17**  
TRIBAL ART LONDON



**6 - 9 SEPTEMBER 2017**

*Celebrating 10 years in the making*

**5 SEPTEMBER 'OPENING PREVIEW' RSVP  
MALL GALLERIES, THE MALL, LONDON SW1**

[WWW.TRIBALARTLONDON.COM](http://WWW.TRIBALARTLONDON.COM)

**JAMIL NAQSH**  
and the eternal feminine

28 July - 27 August



**Pontone**

GALLERY

43 Cadogan Gardens | London SW3 2TB  
+44 20 7730 8777

[art@pontonegallery.com](mailto:art@pontonegallery.com)

[www.pontonegallery.com](http://www.pontonegallery.com)

# art Edinburgh



If I recall correctly it was the celebrated English playwright and witty raconteur, Tom Stoppard, who observed that Edinburgh – aka 'The Athens of the North' – after its August Festival extravaganza, reverted back to its dour grey self as 'The Reykjavik of the South'.

Well that's all long changed with Edinburgh now the major tourist attraction and an international clientele of millions who come the year round. The Edinburgh Festival remains a major draw though with a multi-various menu to appeal to every kind of taste in all the fine and popular arts. The visual arts in the City, with its numerous public and commercial galleries, also provide a wide choice of delights.

For instance there is the ubiquitous blockbuster at the **Scottish National Gallery**, 'Beyond Caravaggio', where the enfant terrible of art history and his gang of Caravaggists can send a frisson of shivers down the spine of even the most hardy gallery visitor, while the **Scottish National Gallery of Modern Art** has mixed Scottish and English art in its thematic exhibition 'True to Life: British Realist Painting in the 1920s and 1930s'. This pioneering show is the first survey of British realist painting from the interwar years and although it includes well known figures from the period such as Stanley Spencer and James Cowie, there are also some less familiar artists with such

splendid names as Meredith Frampton and Bernard Fleetwood Walker.

The **Scottish National Portrait Gallery's** principal show meanwhile is 'Looking Good: The Male Gaze from Van Dyck to Lucian Freud'. As the title suggests the focus is on male portraiture and examines issues surrounding the display of masculine identity through changing fashion and taste.

If all this is very much gendered in the masculine then

**'an international clientele of millions . . .'**

the **Dovecot Gallery** by contrast celebrates the creative power of women in their exhibition 'Daughters of Penelope'. She is of course the most famous mythical weaver of all time and this exhibition brings together acolytes – contemporary women artists and weavers who have contributed to the renowned textile work and history of Dovecot.

At **The Fruitmarket Gallery** there is a major star of the contemporary international art scene – the Brazilian multi-media artist Jac Leirner who uses everyday materials to produce astonishing sculptures that reveal "material poetry of the mundane."

In Edinburgh's commercial art centre on Dundas Street both the **Open Eye Gallery** and **The**

**Scottish Gallery** are marking the centenary of Alberto Morrocco, a great teacher and painter whose finely constructed and richly colourful landscapes, still lifes and portraits formed such a distinctive element in Scottish art of the late 20th century. Open Eye is also mounting a major retrospective of Jack Knox's work – from his early flirtation with colour field abstraction to his later sumptuous still lifes and landscapes. The Scottish Gallery's other shows are recent work by Kate Dowie on the theme of human movement and migration, and the innovative jewellery of Jacqueline Mina.

A comparatively new arrival in Dundas Street is **&Gallery**, run by quite a mover and shaker on the Edinburgh scene, Avril Nicol, who is aiming to put on monthly shows of forward looking art alongside contemporary craft – this month the expressive, colourist paintings of Anna Somerville.

Finally a really new attraction to Dundas Street, **Birch Tree Gallery** which specialises in 'The Fine Art of Craft' and has for their Festival exhibition 'Ethereal Whispers' involving plant inspired works on paper by Laima Dzigaite and decorated porcelain pieces by Cathrine Holtet who similarly draws her inspiration from the natural world. **Bill Hare**

*More Scottish news on page 11*

above  
**Alberto Morrocco** 'The Beach Tent'  
The Scottish Gallery



# Philip Eglin Unfinished Business

3 August – 2 September 2017

[scottish-gallery.co.uk/philipeglin](http://scottish-gallery.co.uk/philipeglin)



THE SCOTTISH GALLERY  
CONTEMPORARY ART SINCE 1842

16 Dundas Street, Edinburgh EH3 6HZ  
+44 (0) 131 558 1200 | [mail@scottish-gallery.co.uk](mailto:mail@scottish-gallery.co.uk)

**Seated Nude**, 2017, 56 x 23 x 20 cms,  
slip-trailed, lead glazed earthenware



## ARRAN OPEN STUDIOS

11-14 AUGUST 2017  
(6th year)

Painters, sculptors, printmakers, craftworkers assemblage, rugging, photography, illustrations jewellery, woodturning, furniture-making and ceramics. A plethora of makers inhabiting one of the most picturesque and compelling landscapes in Scotland

[www.arranopenstudios.com](http://www.arranopenstudios.com)

phone Ruth Mae on 01770 820373 for more details

or visit Arran Open Studios Facebook page

[www.calmac.co.uk](http://www.calmac.co.uk)  
for ferry times  
tel. 0800 066 5000

Ann Hume working in her  
jewellery studio



# CALL FOR ENTRIES NOW OPEN

The Royal Glasgow Institute of the Fine Arts

154<sup>th</sup> Open Annual Exhibition 11<sup>th</sup> - 26<sup>th</sup> November 2017

ONLINE REGISTRATION OPEN UNTIL  
MIDNIGHT 1<sup>ST</sup> OCTOBER 2017

Featuring a selection of cash prizes



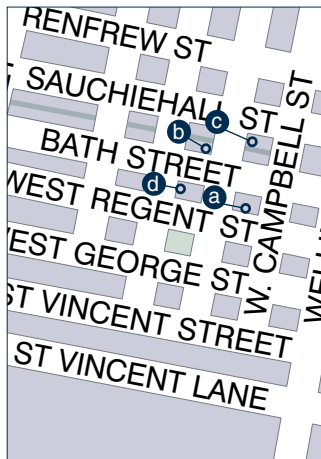
[www.royalglasgowinstitute.org](http://www.royalglasgowinstitute.org)

The Royal Glasgow Institute of the Fine Arts  
RGI Kelly Gallery, 118 Douglas St, Glasgow G2 4ET



Registered Scottish Charity no. SC014650 / Scottish Registered Company Limited by Guarantee no. SC000912

## MAPS 1 &amp; 2 UK SCOTLAND &amp; GLASGOW CITY CENTRE



## GLASGOW

**a CYRIL GERBER FINE ART & COMPASS GALLERY**

178 West Regent Street, Glasgow G2 4RL

**The Summer Exhibition 2017.** Through Aug & into Sep. A selection of 19th–21st C. British Paintings, Drawings and Sculpture including works by Modern British and Scottish Masters, Scottish Colourists, Glasgow School, Eardley, Knox, Power and invited Scottish Contemporaries.

Mon–Fri 9.30–5.30, Sat 10–5  
t 0141 221 3095

mail@gerberfineart.co.uk  
mail@compassgallery.co.uk

f CyrilGerberFineArt  
www.gerberfineart.co.uk  
www.compassgallery.co.uk

**b JOHN GREEN FINE ART**  
**Traditional & Contemporary**

182 Bath Street, Glasgow G2 4HG  
Paintings. An ever changing display of British and Continental oils and watercolours at reasonable prices. Specialist framers and restorers.

Tue–Fri 10.30–5, Sat 10.30–1  
t 0141 333 1991

mail@glasgowgallery.com  
www.glasgowgallery.com

**c ROGER BILLCLIFFE GALLERY**  
**G2 4EL**

**Glasgow – A Celebration of a City.** Until end Aug. Group exhibition of paintings from gallery artists all of whom use Glasgow as their inspiration. **Architectural Silver and Summer Design Collection.** Until end Aug. Mon–Fri 9.30–5.30

t 0141 332 4027

t @BillcliffeArt  
info@billcliffegallery.com  
www.billcliffegallery.com

**d THE ROYAL GLASGOW INSTITUTE**

118 Douglas Street, Glasgow, G2 4ET  
**Call for Entries – The Royal Glasgow Institute of Fine Arts:** 154th Open Annual Exhibition. Aug 1–Oct 1. \*ad  
Online registration open until Oct 1, midnight. See website for details. Exhibition to be held at The Mitchell Library, Nov 11–26.

t 01412 486386  
theroyalglasgowinstitute@gmail.com  
www.royalglasgowinstitute.org

## WESTERN ISLES

**a GREENALL O'DELL STUDIO**

39a South Dell, Isle of Lewis HS2 0SP

t 01851 810170 m 07748 531595  
www.greenalldellstudio.com

## ISLE OF SKYE

**b DIANA MACKIE STUDIO & GALLERY**

10 Borreraig Park, Dunvegan, Isle of Skye IV55 8ZX

t 01470 511795  
www.diana-mackie.co.uk

## ABERDEENSHIRE

**c THE LOST GALLERY**

Strathdon, AB36 8UJ

t 01975 651287  
www.lostgallery.co.uk

## ARGYLL &amp; BUTE

**d ARRAN OPEN STUDIOS**

Isle of Arran, KA27

**Arran Open Studios.** 6th Year. Aug 11–14. \*ad

Painters, sculptors, printmakers, craftworkers, assemblage, rugging, photography, illustrations, jewellery, woodturning, furniture-making, ceramics. A plethora of makers inhabiting one of the most picturesque and compelling landscapes in Scotland. Please see website for more information.

t 01770 820373  
f Arran12  
www.arranopenstudios.com

**e RESIPOLE STUDIOS**

Acharacle, Argyll, PH36 4HX  
t 01967 431506

www.resipolestudios.co.uk

## FIFE

**f PITTENWEEM ARTS FESTIVAL**

Throughout Pittenweem, Fife

**Pittenweem Arts Festival 2017.**

Aug 5–13.

123 artists show their latest work in 83 venues throughout this historic seaside village. Artists' talks, workshops and exhibitions amidst stunning scenery and a friendly atmosphere.

daily 10–5 t 01333 313109

info@pittenweemartsfestival.co.uk  
www.pittenweemartsfestival.co.uk

## EAST LoTHIAN

**g FIDRA FINE ART**

45 Dirleton Avenue

North Berwick, East Lothian EH39 4BL

**Dominique Cameron:** Leith Walks.

Aug 5–Sep 3. Dominique Cameron returns to Leith where she lived for a significant time. She chronicles her thoughts and observations of the people and places through her uniquely lyrical drawing, painting and writing. PV Aug 4, 6–8; special opening hours for Fringe by the Sea, Aug 5–13, 12–5.

Sat/Sun 12–5, & wkdays by appt

t 01620 895057

info@fidrafineart.co.uk

t @fidrafineart f FidraFineArt  
www.fidrafineart.co.uk

BIRCH TREE



GALLERY

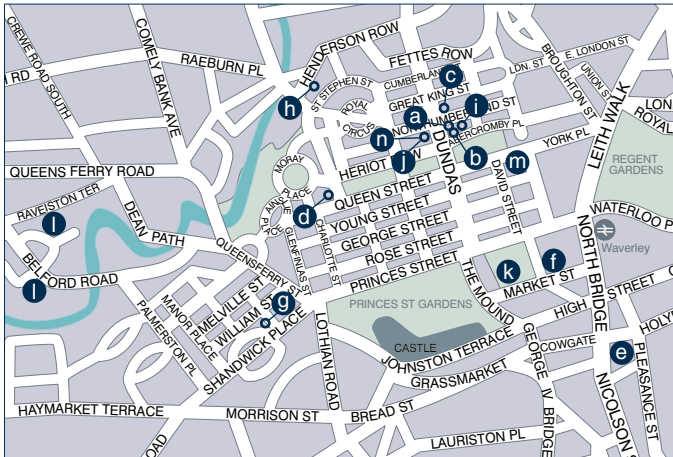
# Ethereal Whispers

Laima Dzigaite and Cathrine Holtet

August 4 – 31

23A Dundas Street  
Edinburgh EH3 6QQ  
www.birchtreegallery.co.uk

## MAP 3 SCOTLAND EDINBURGH

**a** &GALLERY

17 Dundas Street, Edinburgh  
EH3 6QG

**Anna Somerville:** Horizon. Aug 5–30. A true colourist, Somerville paints intuitively in mixed media and oil to imagine atmospheric horizons. These expressive paintings deliver expansive compositions of abstracted light and form. *Tue–Fri 10–5, Sat 10–4*  
*t 07711 285545*  
*info@andgallery.co.uk*  
*t @andgallery\_f andgallery.co.uk*  
*www.andgallery.co.uk*

**b** ARUSHA GALLERY

13A Dundas Street, Edinburgh  
EH3 6QG

**Iona Szalay:** Trying. Aug 3–13. PV Aug 2.  
**Elaine Speirs:** Portrait of Her. Aug 25–Sep 17. PV Aug 24.  
*Mon–Sat 10–5, Sun 1–5*  
*t 0131 557 1412 m 07814 189018*  
*info@arushagallery.com*  
*www.arushagallery.com*

**c** BIRCH TREE GALLERY

23A Dundas St, Edinburgh EH3 6QQ  
**Laima Dzigaite and Cathrine Holtet:** Ethereal Whispers. Aug 4–31. \*ad  
Laima uses plant material as 'graphic strokes' to create delicate collage works. Cathrine specialises in water etched porcelain pottery. Gallery focuses on fine crafts and prints with roots in nature.  
*Tue–Sat 11–6*  
*t 0131 556 4000*  
*art@birchtreegallery.co.uk*  
*f BirchTreeGallery*  
*www.birchtreegallery.co.uk*

**d** CHRISTIE'S

5 Wemyss Place, Edinburgh H3 6DH  
*Mon–Fri 9–5 t 0131 225 4756*

**e** DOVECOOT GALLERY

10 Infirmary St, Edinburgh EH1 1LT  
**Daughters of Penelope.** Until Jan 20. The work of key women weavers and

artists who have contributed to Dovecot's history and present. *daily 10–6 through Aug, free admn*  
**Built in Tapestry.** Dovecot Tapestries and Architecture. Until Mar 17. Tapestry projects from the history of Dovecot Tapestry Studio, created for bold architectural projects. *Mon–Fri 12–4, Sat–Sun 10–6 through Aug, free admn*  
*t 0131 550 3660*  
*info@dovecotstudios.com*  
*www.dovecotstudios.com*

**f** THE FRUITMARKET GALLERY

45 Market Street, Edinburgh  
EH1 1DF

**Jac Leirner:** Add it up. Until Oct 22. Brazilian artist Jac Leirner presents her first solo exhibition in Scotland. *daily 11–6*  
*t 0131 225 2383*  
*info@fruitmarket.co.uk*  
*t @fruitmarket f fruitmarketgallery*  
*www.fruitmarket.co.uk*

**g** GALLERY TEN

5 William Street, Edinburgh  
EH3 7NG

**Picasso:** Exhibition of prints – Lithographs and Etchings.  
**Anne Mette Hjortshoj.** Until Sep 5. Wood fired pots from Danish ceramic artist.  
*Tue–Sat 10.30–5.30.*  
*infogalleryten@gmail.com*  
*t @TENedinburgh*  
*f gallerytenedinburgh*  
*www.galleryten.co.uk*

**h** THE LAUREL GALLERY

58 St Stephen Street, Edinburgh  
EH3 5AL

Independent gallery based in Stockbridge, Edinburgh, specialising in **Original Contemporary Art and Crafts.** Workshops running regularly. *Tue–Sat 11–5*  
*t 0131 226 5022*  
*art@laurelgallery.co.uk*  
*www.laurelgallery.co.uk*

**i** OPEN EYE GALLERY

34 Abercromby Place, Edinburgh  
EH3 6QE

**Festival 2017.** Until Aug 28. An exhibition of the most celebrated artists represented by the Open Eye Gallery during the Edinburgh Festival month, including Jack Knox, John Bellamy, Barbara Rae, Alberto Morrocco and Leon Morrocco. *Mon–Fri 10–6, Sat 10–4*  
*t 0131 557 1020*  
*mail@openeyegallery.co.uk*  
*t @openeyegallerye*  
*www.openeyegallery.co.uk*

**j** THE SCOTTISH GALLERY

16 Dundas Street, Edinburgh  
EH3 6HZ

**Kate Downie:** Anatomy of Haste. Aug 3–Sep 2.

**Alberto Morrocco:** Centenary Exhibition. Aug 3–Sep 2.  
**Jacqueline Mina:** At 75. Aug 3–Sep 2.  
**Philip Eglin:** Unfinished Business. Aug 3–Sep 2. \*ad  
**Martin Cooke:** Classical Graffiti. Aug 3–Sep 2.  
*Mon–Fri 10–6, Sat 10–4*  
*t 0131 558 1200*  
*mail@scottish-gallery.co.uk*  
*t @ScottishGallery f ScottishGallery*  
*www.scottish-gallery.co.uk*

**k** SCOTTISH NATIONAL GALLERY

The Mound, Edinburgh EH2 2EL  
**Beyond Caravaggio.** Until Sep 24. *t 0131 624 6200*  
*www.nationalgalleries.org*

**l** SCOTTISH NATIONAL GALLERY OF MODERN ART

75/73 Belford Rd, Edinburgh EH4 3DR  
**True to Life:** British Realist Painting in the 1920s and 1930s. Until Oct 29. *t 0131 624 6200*  
*www.nationalgalleries.org*

**m** SCOTTISH NATIONAL PORTRAIT GALLERY

1 Queen Street, Edinburgh EH2 1JD  
**Looking Good:** The Male Gaze from Van Dyck to Lucian Freud. Until Oct 29.  
**Douglas Gordon, Robert Burns:** Dirt and Deity. Until Oct 29. *t 0131 624 6200*  
*www.nationalgalleries.org*

**n** THE SUTTON GALLERY

18a Dundas Street, Edinburgh  
EH3 6HZ  
**Thomas Cameron:** Dream Sequence. Until Sep 2. This exciting and sought-after young artist returns with an exhibition of oils on board and plywood that use found photographs as a starting point for spellbinding interiors and urban snapshots. *Tue–Sat 11–5*  
*t 0131 557 4810*  
*reuben@thesuttongallery.com*  
*www.thesuttongallery.com*



## Plant power

The 833 close hung botanical paintings by Victorian artist Marianne North in her eponymously named gallery in Kew Gardens, one of the great eccentric sites of London, make for daunting contemporary inspiration. It doesn't seem to have fazed the intrepid Derek Rothera of **The Millinery Works** though who, this summer, has invited some 21 artists to participate in a selling exhibition of artworks on a plant life theme.

Entitled 'Botanic: Summer Exhibition of Nature in Contemporary Art' and inspired by Marianne North, the 200 works included are hung in similar style, ie frame to frame, and they make for a stunning display. Rothera would appear to have been at his persuasive best too, when he was putting this show together, drawing in some big names in the form of Patrick Hughes and David Inshaw, to exhibit alongside some of the gallery's more regular star performers like Eric Rimmington, Susan Rosenberg, Frank Stanton and Gethin Evans.

Meanwhile interpretation of the term 'botanic' has been left attractively loose so that, alongside the more focussed studies of flowers and plants, we have, for example, one of Patrick Hughes' characteristic optical tour de force, a serene night scene of tree and moon by David Inshaw and a field edge of thistledown

from Alex Saunderson. There is, finally, a touching appearance from Rothera's late sister Shirley Anne Rothera who, on the evidence here, was a fine artist alongside her activities as a pioneer eco-warrior; the show is, nicely, dedicated to her.

## Tribal gathering

Art fairs of late have become increasingly synonymous with 20th century and Contemporary artwork, so it is good to be able to acknowledge the huge and rapidly growing success of something very different, ie Tribal Art London. Currently celebrating its 10th anniversary, it is still something of a comparative newcomer but looking very good in its most recent home in the handsomely refurbished **Mall Galleries**, which is likely to prove an established fixture.

From a single room space in the Portobello Road in 2008, Cork Street in 2009 and The Mall in 2014, when it also changed its name from the Tribal Art Fair to Tribal Art London, it has grown to include some 23 exhibitors and has become recognised internationally as a major player. And it is not there just for the dealers, specialists and big collectors, but for anyone who appreciates the astonishing power and artistic 'otherness' of so much of this work – from the emotional density of the 18th to 19th century 'Yupic Eskimo

Walrus Head Ivory Amulet' at Adam Ethnographic to the sculptural grace of a mid 20th century 'Girl's Courting Corset' from the Southern Sudan at Cordelia Donohoe/Kezhia Oregre to give one example. And that is just the tip of a visual iceberg.

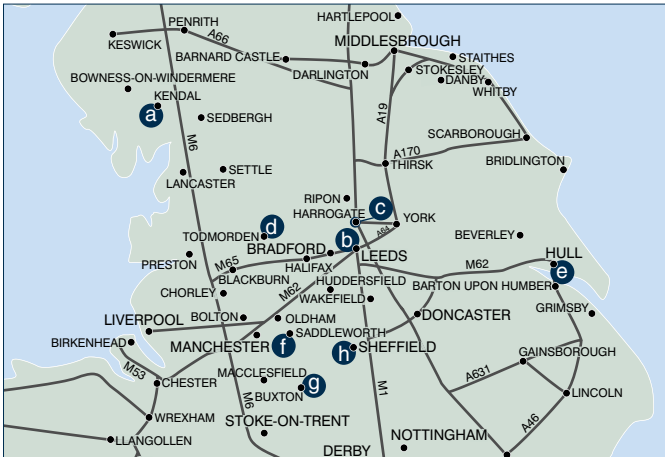
## Making space

Earlier this year Tony Pontone moved his well established Albemarle Gallery out of Mayfair to Knightsbridge, and opened **Pontone Gallery**. In the process he has found himself – and his son who now manages it – a really elegant space that seems to lend itself to an increasingly expansive programme.

August's show for example is work by one of Pakistan's leading artists, Jamil Naqsh. Now approaching 80, Naqsh has gained his considerable international reputation exploring that delicate boundary between his own culture and that of the sub-continent in general, Muslim and non-Muslim, and that of Western modern traditions. Variations on a theme of the female figure and doves, these pieces are both refined and powerful, their subtle surfaces rich with poetic resonance. NU

from left  
 'Yupic Eskimo Walrus Head Ivory Amulet' Adam Ethnographic, Tribal Art London at Mall Galleries  
 David Inshaw 'Sycamore' The Millinery Works  
 Jamil Naqsh 'Tranquility' Pontone Gallery

## MAP 4 ENGLAND NORTH



### CUMBRIA

- (a) ABBOT HALL ART GALLERY**  
Kendal, Cumbria LA9 5AL  
t 01539 722464  
info@lakelandarts.org.uk  
[www.abbothall.org.uk](http://www.abbothall.org.uk)

### LEEDS

- (b) BONHAMS**  
30 Park Sq, Leeds, Yorks LS1 2PK  
**Auctioneers.** Enqs: Simon Mitchell.  
t 0113 244 8011

### NORTH YORKSHIRE

- (c) NUMBER 1 HARROGATE**  
1 Cambridge Terrace, Harrogate  
Yorks HG1 1PN  
**The Joy of Landscape – Anthony Bamber.** The translucent qualities of watercolour and the artist's evident enjoyment of the Yorkshire Dales might account for the great sense of freedom and joie de vivre in these works.  
by appt t 07932 621261  
[www.rachelgrimmerpaintings.com](http://www.rachelgrimmerpaintings.com)

### LANCASHIRE

- (d) WATER STREET GALLERY**  
25 Water Street, Todmorden  
Lancs OL14 5AB  
**Towards Abstraction.** Until Aug 27. Pure abstraction and works derived from the visual world. 15 artists – 3D and 2D works.  
**Colin Lyall:** Altered States. Aug 3–Sep 3. Solo exhibition of drawing and painting – urban and sci-fi graphics.  
**Makers and Crafts** – ceramics, glass, jewellery, fibre art, cards, gifts and more.  
Mon–Sun 9.30–5.30 & by appt  
clo Tue  
t 01706 839714  
info@waterstreetgallery.co.uk  
[www.waterstreetgallery.co.uk](http://www.waterstreetgallery.co.uk)

### NORTH LINCOLNSHIRE

- (e) THE ROPEWALK**  
Maltkiln Road, Barton upon Humber, N Lincs DN18 5JT  
[www.the-ropewalk.co.uk](http://www.the-ropewalk.co.uk)

### OLDHAM – SADDLEWORTH

- (f) MILLYARD GALLERY**  
97 The Square, Uppermill  
Saddleworth, Oldham OL3 6BD  
**Here and Now.** Through Aug. Featuring a vibrant range of work by Contemporary British Artists Alan Birch, Geoff Grandfield, Dr John Hewitt, Andrea Pawson, Jill Randall, Mark Whyatt. **\*own art**  
Tue–Sat 10–5  
t 01457 870410  
millyardgallery@gmail.com  
[www.millyard-gallery.co.uk](http://www.millyard-gallery.co.uk)

### DERBYSHIRE

- (g) BUXTON MUSEUM & ART GALLERY**  
Terrace Road, Buxton, Derbys  
SK17 6DA  
**Malcolm Ryan:** Stilled Moments. Until Sep 3. Oil paintings reflecting the artist's interest in observing day to day life with the emphasis on people in present day situations, a subject which has occupied him over the last 40 years. Meet the artist, Aug 5, 2–4.  
Tue–Fri 9.30–5.30, Sat 9.30–5  
Sun & Bholis 10.30–5  
t 01629 533540  
buxton.museum@derbyshire.gov.uk  
t @buxtonmuseum  
f BuxtonMuseumandArtGallery  
[www.derbyshire.gov.uk/buxtonmuseum](http://www.derbyshire.gov.uk/buxtonmuseum)

### SHEFFIELD

- (h) CUPOLA CONTEMPORARY ART**  
174–178a Middlewood Road  
Sheffield, S Yorks S6 1TD  
**John Brokenshire:** Camino. Until Aug 26. Paintings inspired and informed by the experience of completing the Camino de Santiago de Compostela pilgrimage. Free talk by the artist Aug 19, 2.  
Mon–Sat 10–6  
t 0114 285 2665  
karen@cupolagallery.com  
t @cupolagallery  
f cupolacontemporaryart  
[www.cupolagallery.com](http://www.cupolagallery.com)

## SCOTTISHopenstudios

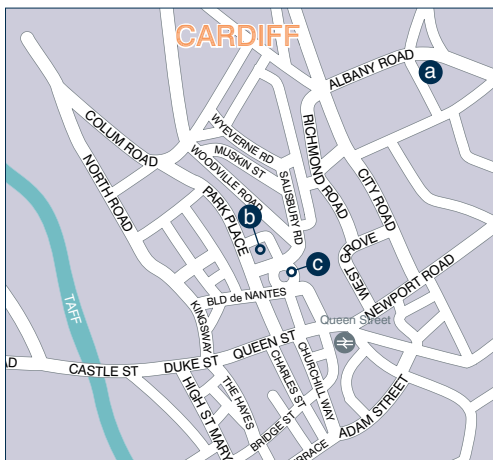
As I am always saying whenever I get the chance to write about Scottish art, it is never simply a question of just looking at what's going on in Edinburgh and Glasgow. There has been a hugely active regional scene for many years now, one that is getting stronger all the time and much encouraged by the move towards artistic self-help exemplified in the open studios scheme which has really taken off in Scotland in the

last 10 to 15 years. This August, for example, there are two particularly significant such events on the West and East coasts – Arran Open Studios and Pittenweem Arts Festival in Fife. With some 39 venues and around 50 participating artists, Arran's event has just grown and grown over the last decade and is now so significant a part of the island's cultural offering that it has this year formed a trail that facilitates

year round visits to artists and craftspeople in their studios. Meanwhile Pittenweem has, in just 15 years grown from a straightforward open studios event into a full blown visual arts festival with, this year, some 120 artists in around 83 venues, invited artists Paul Furneaux, Anna S King and Graham Rich, substantial art bursaries, workshops and talks. All this in a small historic Scottish fishing town!

NU

## MAPS 5 &amp; 6 UK WALES &amp; BORDERS &amp; CARDIFF CITY CENTRE



## CARDIFF

**a THE ALBANY GALLERY**

74b Albany Road, Cardiff CF24 3RS

**Summer Exhibition.** Until Sep 9.

A changing exhibition of new work from over 50 established and emerging artists in a variety of media.

*Mon–Sat 10–5, Sun & BHols 11–4**t 029 2048 7158**info@albanygallery.com**t @albanygallery***f** TheAlbanyGallery[www.albanygallery.com](http://www.albanygallery.com)**b KOOYWOOD GALLERY**

8 Museum Place, Cardiff CF10 3BG

**Roger Cecil (1942–2015):** Exhibition of over 60 paintings.

Until Sep 2. "The reputation of his mesmerising art can only grow as his legacy is revealed." Peter Wakelin.

*Tue–Sat 2–5**t 029 2023 5093**rhian@kooywoodgallery.com*[www.kooywoodgallery.com](http://www.kooywoodgallery.com)**c MARTIN TINNEY GALLERY**

18 St Andrew's Crescent, Cardiff CF10 3DD

**Summer Exhibition.** Through Aug.

Changing exhibition by Wales' leading artists, including

Ceri Richards, Kyffin Williams, David Jones,

Gwilym Prichard, Ernest Zobole, Shani Rhys James,

Claudia Williams, William Selwyn, Harry Holland,

Sally Moore and others.

*Mon–Fri 10–6, Sat 10–5**t 029 2064 1411**mtg@artwales.com*[www.artwales.com](http://www.artwales.com)

## WALES &amp; BORDERS

## DYFED

**a KING STREET GALLERY**

33 King Street, Carmarthen, Dyfed SA31 1BS

**Members' Late Summer Show** of contemporary fine and applied arts. Showing in the Main Gallery.**John Cyrlas Williams.** Aug 4–30.

Exhibition curated by Peter Rossiter and Peter Lord. Showing



in the Chate Room.

*Mon–Sat 10–5**t 01267 220121**gallery@kingstreetgallery.co.uk**t @kingstreetgallery***f** kingstreetgallery[www.kingstreetgallery.co.uk](http://www.kingstreetgallery.co.uk)

## ANGLESEY

**b ORIEL MńN**

Rhosmeirch, Llangefni, Anglesey LL77 7TQ

**Luned Rhys Parri and Tegwyn Francis Jones.**

Until Sep 10.

An rare opportunity to see the work of two Welsh artists exhibited together for the first time.

*daily 10.30–5**t 01248 724444**oriel@ynysmon.gov.uk*[www.orielynysmon.info](http://www.orielynysmon.info)**c TEGFRYN GALLERY**

Cadnant Road, Menai Bridge, Anglesey LL59 5EW

**Summer Exhibition.** Through Aug.

Changing exhibition by Wales' leading artists, including Kyffin Williams, Peter Prendergast, William Selwyn, Claudia Williams, Mary Lloyd Jones, Shani Rhys James, Eleri Mills, Ann Lewis and many others.

*Mon–Sat 10–5, Sun 11–4.30**t 01248 715128**tegfryn@artwales.com*[www.artwales.com](http://www.artwales.com)**d UCHELDRE CENTRE**

Millbank, Holyhead, Anglesey LL65 1TE

**Art for All/Arlunio i Bawb.** Until Sep 5.

A chance to see the wide range of local artwork entered and exhibited in Ucheldre's 26th annual Art for All Competition.

Beautiful grounds, with walled garden, café, films and events.

*Mon–Sat 10–5, Sun 2–5, free admn**t 01407 763361**boxoffice@ucheldre.org**t @CanUcheldreCtr***f** UcheldreHolyhead[www.ucheldre.org](http://www.ucheldre.org)

## CONWY

**e FIN Y PARC GALLERY**  
Ffin Y Parc Country House & Gallery, Betws Road  
Llanrwst, Conwy LL26 0PT  
**Martyn Jones.** Major exhibition of new works.  
Until Aug 16.

**Willie Carter:** Quirky Ceramics. Until Aug 16.  
**Summer Mixed Exhibition** by Gallery Artists: Buy off the wall. Until Aug 16.

**Matthew Wood.** Interior paintings of Croft Castle.  
Aug 20–Sep 13.

**Sharon Griffin.** Figurative ceramic and mixed media sculptures. Aug 20–Sep 13.

Wed–Sat 10–5, Sun 11–5

t 01492 642070

ralph@welshart.net

www.welshart.net

## GWYNEDD

**f ORIEL PLAS GLYN-Y-WEDD**  
Llanbedrog, Pwllheli, Gwynedd LL53 7TT

**Mixed Exhibition.** Until Oct 1.

Variety of works by over 30 artists – off the wall exhibition.

daily 10–5, clo Tue

t 01758 740763

enquiry@oriel.org.uk

t @plaglyn

f orielplaglynywedd

www.oriel.org.uk

## PEMBROKESHIRE

**g HARBOUR LIGHTS GALLERY**

Porthgain, nr St Davids, Pemb SA62 5BL  
Specialises in exhibiting a wide selection of **Original paintings, Limited Edition Prints, and Sculpture** from Wales leading artists. The Arts Council of Wales Collectorplan interest free payment scheme is now available at Harbour Lights Gallery. Full details on our website.

t 01348 831549

info@art2by.com

www.art2by.com

## MONMOUTHSHIRE

**h THE ART SHOP & CHAPEL**  
8 Cross Street, Abergavenny, Mons NP7 5EH

**Artist in the Garden:** mixed summer show. Until Aug 19.  
Rows, banks and clusters of paintings, drawings, printworks, ceramics, jewellery and textiles by new artists and old favourites.

Arts Council of Wales Collectorplan available.

Tue–Sat 9.15–5, free admn

t 01873 852690

admin@artshopandchapel.co.uk

t @TheArtShopWales

f Theartshopandchapel

www.artshopandchapel.co.uk

## POWYS

**i MOMA MACHYNLLETH**  
Y Tabernacl, Heol Penrallt, Machynlleth, Powys SY20 8AJ

**Margaret Foreman:** Still Life. Until Sep 16.

**Martin Cheek:** An Ostentation of Peacocks. Until Sep 16.

**Legend:** Tabernacle Art Competition. Until Aug 31.

**Tabernacle Collection.** Until Aug 31.

Mon–Sat 10–4

t 01654 703355

info@moma.machynlleth.org.uk

www.moma.machynlleth.org.uk

## PUBLIC GALLERIES

Highlighting exhibitions in public spaces around the UK  
See area listings for full details

**BARBICAN ART GALLERY, LONDON**

Trajal Harrell: Hoochie Koochie. Jul 20–Aug 13.

Map 28

**ESTORICK COLLECTION, LONDON**

Franco Grignani: Art as Design 1950–1990. Until Sep 10.

Map 28

**FRUITMARKET GALLERY, EDINBURGH**

Jac Leirner: Add it up. Until Oct 22.

Map 3

**GUILDFORD HOUSE GALLERY, GUILDFORD**

Dialogues: A Quilt Art exhibition. Until Sep 10.

Map 15

**LEAMINGTON SPA ART GALLERY, WARKS**

Drawn from Life: People on Paper. Until Sep 17.

Map 7

**LEIGHTON HOUSE MUSEUM, LONDON**

Former home and studio of Victorian artist Frederic, Lord Leighton. Map 19

**NATIONAL GALLERY, LONDON**

Chris Ofili: Weaving Magic. Until Aug 28.

Map 26

**ROYAL ACADEMY OF ARTS, LONDON**

Summer Exhibition 2017. Until Aug 20.

Map 24

**SCOTTISH NATIONAL GALLERY, EDINBURGH**

Beyond Caravaggio. Until Sep 24.

Map 3

**SCOTTISH NATIONAL GALLERY OF MODERN ART  
EDINBURGH**

True to Life: British Realist Painting in the 1920s and 1930s. Until Oct 29.

Map 3

**SCOTTISH NATIONAL PORTRAIT GALLERY, EDINBURGH**

Looking Good: The Male Gaze from Van Dyck to Lucian Freud. Until Oct 29.

Map 3

**STANLEY SPENCER GALLERY, BERKS**

An Artistic Affair. Until Oct 1.

Map 14

**TATE BRITAIN, LONDON**

Queer British Art 1861–1967. Until Oct 1.

Map 21

**TATE MODERN, LONDON**

Giacometti. Until Sep 10.

Map 27

**THELMA HULBERT GALLERY, HONITON**

Evolver Prize 2017. Until Aug 26.

Map 11

**12 STAR GALLERY, LONDON**

Jérémie Jung: Kihnu – The Isle of Women. Until Sep 15.

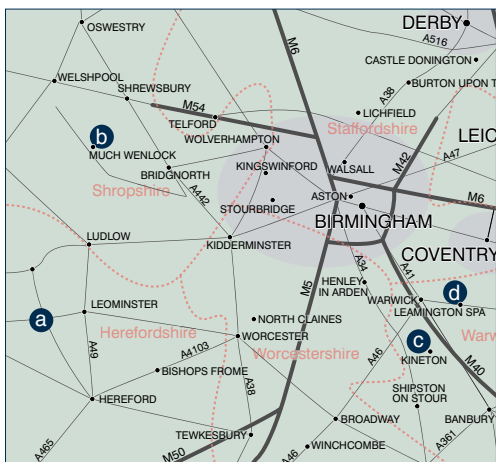
Map 21

**VICTORIA AND ALBERT MUSEUM, LONDON**

The Pink Floyd Exhibition: Their Mortal Remains. Until Oct 1.

Map 21

## MAP 7 ENGLAND MIDLANDS



## HEREFORDSHIRE

**(a) OLD CHAPEL GALLERY**

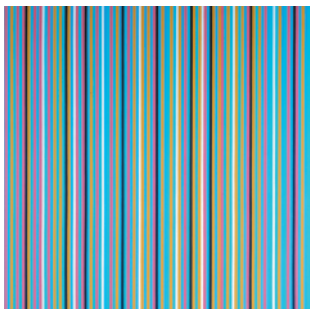
East Street, Pembridge, Herefords HR6 9HB  
An eclectic collection of the best of **British fine art and craft**.  
daily 11–5, Sun 11–4, Tue by appt t 01544 388842  
oldchapelgallery@googlemail.com  
t @chapelgallery  
f OldChapelGallery  
www.oldchapelgallery.co.uk

## SHROPSHIRE

**(b) TWENTY TWENTY GALLERY**

3–4 High Street, Much Wenlock, Shrops TF13 6AA  
**Richard Bawden** and friends: Coast. Until Aug 5.  
Richard Bawden, Andy Lovell, Marian Hill, Martin John Fowler, James Campbell, Sarah Perry and Molly Attrill.  
**Angie Lewin** and **Alex Malcolmson**. Aug 12–Sep 16. ad  
Artist prints and Constructions.  
Mon 11–5, Tue–Sat 10–5  
t 01952 727952  
info@twenty-twenty.co.uk  
t @2020Gallery  
www.twenty-twenty.co.uk

## THUMBnail



Bridget Riley 'Achaean'

One of the more remarkable things about **Compton Verney's** big summer show, 'Seurat to Riley: The Art of Perception' is that, given the fundamental nature of its premise and its central importance to the development of 20th century art, it has never really been done before, not in this country at least. The exploration of colour theory and the nature of perception began, in a sense even, before Seurat himself, with

the Impressionists and their interest in Chevreul's discovery of simultaneous colour contrasts in the 1850s. Seurat's pointillism simply took it to more extreme lengths and then the artists were off, colour and perception becoming a thing in itself, free of subject matter. With Albers, Vasarely, Escher and Riley the stars here though, this show follows the strictly perceptual path to fascinating effect. **NU**

**(b) WENLOCK FINE ART**

3 The Square, Much Wenlock, Shrops TF13 6LX  
20th and 21st Century **British Paintings**.  
Mon–Sat 10–5 or by appt  
t 01952 728232  
www.wenlockfineart.co.uk

## WARWICKSHIRE

**(c) COMPTON VERNEY**

Warwicks, CV35 9HZ  
**Seurat to Riley: The Art of Perception**. Until Oct 1.  
An eye-popping celebration of pointillism, pattern and optical illusion.  
One of the first exhibitions of its kind in the UK, bringing together over 90 stunning works by 23 artists.  
Tue–Sun 11–5  
t 01926 645500  
info@comptonverney.org.uk  
t @ComptonVerney  
f ComptonVerney  
www.comptonverney.org.uk

**(d) LEAMINGTON SPA ART GALLERY & MUSEUM**

The Royal Pump Rooms, The Parade, Royal Leamington Spa, Warwicks CV32 4AA  
**Drawn from Life: People on Paper**. Until Sep 17.  
An Arts Council Collection touring exhibition.  
Tue–Sat 10.45–5, Sun & BHols 11–4  
t 01926 742700  
prooms@warwickdc.gov.uk  
t @LeamSpaArtGall  
f Leamington Spa Art Gallery & Museum  
www.warwickdc.gov.uk/royalpumprooms

Cathrine Holtet 'Fern Bowl'  
Birch Tree Gallery (see listing  
on map 3 and editorial on page 6)



## MAP 8 ENGLAND COTSWOLDS



### WARWICKSHIRE

**a THE STOUR GALLERY**  
10 High Street, Shipston-on-Stour  
Warks CV36 4AJ  
**Summer Exhibition.**  
Featuring local artist John Pickering  
and others.  
*Mon–Sat 10–5.30, clo Thu*  
*t 01608 664411*  
[info@thestourgallery.co.uk](mailto:info@thestourgallery.co.uk)  
[www.thestourgallery.co.uk](http://www.thestourgallery.co.uk)

### GLOUCESTERSHIRE

**b ARCHITECTURAL HERITAGE**  
Taddington Manor, Taddington  
nr Cutsdean, Glos GL54 5RY  
**Sculpture** – Medieval to Modern,  
**Garden** – Antique Ornament and  
Bespoke, **Interiors** – Unique and  
Extraordinary.  
*Mon–Fri 9–5, Sat by appt*  
*t 01386 584414*  
[office@architectural-heritage.co.uk](mailto:office@architectural-heritage.co.uk)  
[www.architectural-heritage.co.uk](http://www.architectural-heritage.co.uk)

**c CAMPDEN GALLERY**  
High Street, Chipping Campden  
Glos GL55 6AG  
**Summer Exhibition.** Until Sep 3.  
*Tue–Sat 10–5.30, Sun 11–4*  
*t 01386 841555*  
[info@campdengallery.co.uk](mailto:info@campdengallery.co.uk)  
[www.campdengallery.co.uk](http://www.campdengallery.co.uk)

**d THE CHAPEL ARTS**  
Knapp Road, Cheltenham, Glos  
GL50 3QQ  
**Patricia Volk.** Until Aug 27.  
Bright, colourful ceramic sculpture.  
*Tue–Sun 10–4 & by appt*  
*t 01242 580077*  
[ian@martinschelt.co.uk](mailto:ian@martinschelt.co.uk)  
[www.thechapelarts.com](http://www.thechapelarts.com)

**e GALLERY PANGOLIN**  
Chalford, Glos GL6 8NT  
**The Summer of Love: Fifty Years**  
On. Aug 16–Sep 15.  
Sculpture, prints and drawings  
created in 1967 and contemporary

works relating to war, peace and  
love.  
**Ark:** at Chester Cathedral.  
Until Oct 15.  
Curated by Gallery Pangolin, the  
largest modern sculpture exhibition  
in the north-west of England.  
*Mon–Fri 10–6, Sat 10–1*  
*t 01453 889765*  
[gallery@pangolin-editions.com](mailto:gallery@pangolin-editions.com)  
[t @GalleryPangolin](https://www.instagram.com/gallerypangolin)  
**f** Gallery-Pangolin  
[www.gallery-pangolin.com](http://www.gallery-pangolin.com)

**f JOHN DAVIES GALLERY**  
The Old Dairy Plant, Fosseyway  
Business Park, Moreton-in-Marsh  
Glos GL56 9NQ  
**David Prentice (1936–2014):**  
*A Window on a Life's Work.*  
Until Aug 26.  
*A Selling Retrospective Exhibition.*  
Paintings from the 1950s and '60s  
and every decade through to 2012.  
Comprises early abstract  
compositions and landscapes in all  
media.  
*Mon–Sat 10–5*  
*t 01608 652255*  
[info@johndaviesgallery.com](mailto:info@ johndaviesgallery.com)  
[www.johndaviesgallery.com](http://www.johndaviesgallery.com)

### OXFORDSHIRE

**g BONHAMS**  
Banbury Road, Shipton on  
Cherwell, Kidlington, Oxford, Oxon  
OX5 1JH  
**Fine Art Auctioneers.** Valuations  
and collections.  
*please contact for viewing times*  
*t 01865 853640*  
[oxford@bonhams.com](mailto:oxford@bonhams.com)

## THUMBnail



Lucian Freud 'Drawing of a Girl, Alice'

When you come to think about it,  
the steady persistence of the  
activity of drawing from life into  
21st century art is among the  
more unlikely of survivals. More or  
less everything has been against it  
– abstraction, conceptualism and  
minimalism to name just some of  
its potential nadirs – and yet on it  
goes. All these thoughts prompted  
by a lovely, quiet Arts Council  
exhibition that has been going  
round the country and now finds

itself at **Leamington Spa Art  
Gallery & Museum.** Entitled  
'Drawn from Life: People on Paper'  
it includes some of the biggest  
names in 20th and 21st century  
British art, from Gwen John and  
Harold Gilman via Moore and  
Hepworth, Hockney, Hamilton and  
Freud to Charles Avery and Mimei  
Thompson in the present day.  
Some wonderful surprises too –  
eg Paolozzi's astonishing 'After  
'Rembrandt.'

## MAP 9 ENGLAND CORNWALL



**(a) CIRCLE CONTEMPORARY**  
Hawksfield, Atlantic Highway, A39  
Wadebridge, Cornwall PL27 7LR  
**Peter Hayes:** Raku demonstration  
with live pit firing. On Aug 5.  
Circle is a Fine Art Gallery with a  
selection of abstract artists whose  
primary inspiration is the natural  
landscape. See website for details.  
*Mon-Sat 10-4 or by appt*  
*t 01208 813220 m 07931 611959*  
*lucy@circlecontemporary.co.uk*  
*t @circlecontemp*  
**f** CircleContemporaryGallery  
[www.circlecontemporary.co.uk](http://www.circlecontemporary.co.uk)

**(b) JACKSON FOUNDATION GALLERY**  
North Row, St Just, TR19 7LB  
**Kurt Jackson:** Bees (and the Odd  
Wasp) in My Bonnet. Until Aug 19.  
Last chance to view the results of  
artist Kurt Jackson's years spent  
exploring the world of bees and other  
pollinators. A family friendly exhibition  
of art and science.  
*t 01736 787638*  
*info@kurtjackson.com*  
*t @JacksonFGallery f JacksonFoundation*  
[www.JacksonFoundationGallery.com](http://www.JacksonFoundationGallery.com)

**(c) KESTLE BARTON**  
Manaccan, Helston, TR12 6HU  
**Mike McInerney:** Ebb & Flow. Showing

until Sep 3.  
*daily 10.30-5, clo Mon except BHols*  
*t 01326 231811*  
*info@kestlebarton.co.uk*  
[www.kestlebarton.co.uk](http://www.kestlebarton.co.uk)

**(d) LEMON STREET GALLERY**  
13 Lemon Street, Truro, TR1 2LS  
**Elsa Taylor:** Aspects of Colour.  
Until Aug 5.  
**Gareth Edwards:** The Silent Frontier.  
Until Aug 5.  
**18th Anniversary Exhibition.**  
Aug 12-Sep 9.  
**Withiel.** Until Sep 30. Viewing for  
Withiel by appt.  
*Mon-Sat 10-5 t 01872 275757*  
*info@lemonstreetgallery.co.uk*  
*t @LemonStGallery f lemonstgallery*  
[www.lemonstreetgallery.co.uk](http://www.lemonstreetgallery.co.uk)

**(e) THE NEW GALLERY**  
Portscatho, Cornwall TR2 5HW  
An artists' run **showroom and  
studios** established 1985.  
Subject of the book 'Portscatho  
Portrait of a Cornish Art Colony'.  
Artists include Chris Insoil,  
Trevor Felcey, Eric Ward, the Late  
Grace Gardner, Andrea Insoil,  
David Shutt, Alice Mumford,  
Sue Davis, Jenny Shaw-Browne,  
Rob Carter, Andrew Tozer and visiting

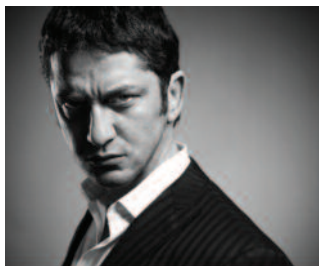
artists associated with Portscatho.  
*Usually Thu, Fri, Sat 10-12.30, 2-5*  
*or by appt t 01872 580 445*  
*chrissinoll@gmail.com*  
[www.thenewgalleryportscatho.co.uk](http://www.thenewgalleryportscatho.co.uk)

**(f) THE PADSTOW STUDIO**  
30 Duke Street, Padstow, PL28 8AB  
**Contemporary drawings & paintings**  
by Sarah Adams, Kim Bentley,  
Rachel Budd, Mark Cazalet,  
Lynn Golden, Phil Naylor,  
Alison Pullen, Kit Surrey, Anita Taylor,  
Chris Thomas and Paul Thomas.  
Sculpture by Mo Farquharson and  
ceramics by James Campbell.  
*Thu-Sat 11-1, 2-5 & by appt*  
*t 01841 533777*  
[www.padstowstudio.co.uk](http://www.padstowstudio.co.uk)

**(g) REDWING GALLERY**  
36A Market Jew Street, Penzance  
TR18 2HT  
entrance on Wood Street  
**Changing exhibitions** by artists united  
by a strong voice and freedom of  
expression outside of convention.  
*Tue-Sat 11-5*  
*t 01736 711458*  
[www.redwinggallery.co.uk](http://www.redwinggallery.co.uk)

**(h) TREGONY GALLERY**  
58 Fore Street, Tregony, TR2 5RW  
**Sea of Colour.** Until Aug 26.  
A mixed show reflecting the vibrancy  
of the Cornish summertime featuring  
gallery artists Euan McGregor,  
Sara Lee Roberts, Kay Vinson and  
Karen McEndow, new graduates and  
the winners of 2017 Tregony Gallery  
Art Prize.  
We are also pleased to introduce  
newly represented artists  
Sarah Spackman, Ella Carty and  
ceramist Leonie Stanton.  
*Tue-Sat 10-5 & by appt*  
*t 01872 530505 m 07496 953471*  
*info@tregonygallery.co.uk*  
*t @TregonyGallery*  
[www.tregonygallery.co.uk](http://www.tregonygallery.co.uk)

**(i) YEW TREE GALLERY**  
Keigwin, nr Morvah & Pendeen  
Cornwall TR19 7TS  
*Tue-Sat 10.30-5 t 01736 786425*  
*gilly@yewtreegallery.com*  
*t @gilly-6541 f YewTreeGallery*  
[www.yewtreegallery.com](http://www.yewtreegallery.com)



from left

Sarah Dunn photograph  
'Gerard Butler, actor' 2009  
Looking Good at the Scottish National  
Portrait Gallery (see listing on map 3  
and editorial on page 6)

Rosemary Clunie  
'Coming Through'  
The Infinite Gallery (see online galleries  
listing on facing page)

## MAP 10 CORNWALL ST IVES

## ONLINE GALLERIES

Businesses operating principally on the Internet

**HEAD OF ZEUS BOOKS**

**The Magic Lamp:** by Booker Prize winner Ben Okri and artist Rosemary Clunie. Published on Sep 7. \*ad  
An extraordinary collaboration between artist and artist in hardback and ebook.  
[www.headofzeus.com](http://www.headofzeus.com)

**HENRY MILLER FINE ART**

Walthamstow, East London  
A curated collection of works focusing on the male form, in media including paintings, drawings, prints and photography. 17th century to the present.  
*daily viewing by appt*  
t 020 8509 2044  
m 07769 700290  
henry@henrymillerfineart.co.uk  
[www.henrymillerfineart.co.uk](http://www.henrymillerfineart.co.uk)

**ILLUSTRATION ART GALLERY**

Original illustration art from books, magazines, newspapers and comics at affordable prices.  
t 020 8768 0022  
art@illustrationartgallery.com  
[www.illustrationartgallery.com](http://www.illustrationartgallery.com)

**THE INFINITE GALLERY**

Rosemary Clunie.  
rosemaryclunieart@gmail.com  
[www.rosemaryclunie.com](http://www.rosemaryclunie.com)

**PrintsGB.com**

Dedicated site promoting the work of artists working in print. \*ad  
Featuring:  
Jane Bristowe, Emma Clark, Paula Cox, Colin Gale, Vincent Jackson, Elaine Newman, Susie Perring, Melvyn Petterson, Sonia Rollo, Chris Salmon.  
t 01372 842879  
[www.printsgb.com](http://www.printsgb.com)

**SAMUEL ROBSON FINE ART**

Specialising in Modern British Paintings and Sculptures.  
t 07894 086836  
sam@samuelrobsonfineart.com  
[www.samuelrobsonfineart.com](http://www.samuelrobsonfineart.com)

**TALISMAN FINE ART**

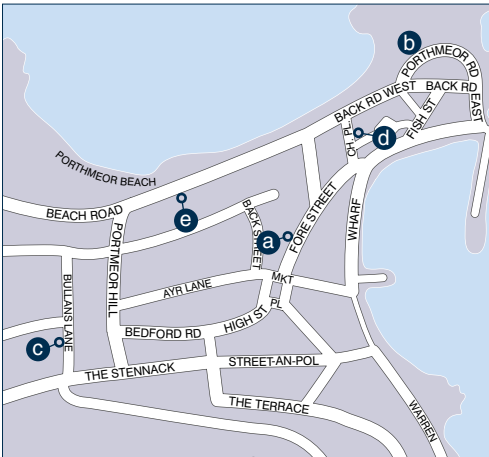
Symbolist Art, Art Nouveau, Deco, mainly on paper (1860-1940).  
t 07764 578130  
pictures@talisman-fine-art.com  
[www.talisman-fine-art.com](http://www.talisman-fine-art.com)

**VICTOR ARWAS GALLERY**

Editions Graphiques Ltd, London  
Original graphics, drawings, paintings, 1880-1960.  
Art Nouveau and Art Deco Applied Arts and graphics.  
Books by Victor Arwas.  
t 020 7499 2658  
art@victorarwas.com  
[www.victorarwas.com](http://www.victorarwas.com)

**THE WHITLEY ART GALLERY**

Enniskerry, Co. Wicklow, Ireland  
viewing by appointment  
Original Prints and Drawings, Japanese Woodblocks, Contemporary Artists and Photographers.  
t 00353 1 2829915  
david@thewhitleyartgallery.com  
[www.thewhitleyartgallery.com](http://www.thewhitleyartgallery.com)

**(a) BELGRAVE ST IVES**

22 Fore Street, St Ives, Cornwall TR26 1HE  
Mon-Sat 10-6  
t 01736 794888  
info@belgravestives.co.uk  
t @belgravestives  
[www.belgravestives.co.uk](http://www.belgravestives.co.uk)

**(b) PENWITH GALLERY**

Back Road West, St Ives, Cornwall TR26 1NL  
**Jane Yates and Bob Devereux.** Aug 4-Sep 4.  
**Associate Members' Exhibition:** Small Paintings. Aug 4-Sep 4.  
**Members' Exhibition:** Small Paintings. Until Sep 4.  
Mon-Sat 10-5.30  
t 01736 795579  
mail@penwithgallery.com  
t @PenwithGallery  
f PenwithGallery  
[www.penwithgallery.com](http://www.penwithgallery.com)

**(c) SANDRA BLOW RA STUDIO**

Bullans Court, Bullans Lane, St Ives, Cornwall TR26 1RB  
**Studio tours** generally on Thursdays by appointment.  
£5pp including refreshments.  
The studio is just off The Stennack within walking distance of St Ives town centre. Sandra Blow's paintings and prints are for sale, original screenprints framed, signed and numbered, from £495. Also cards, books, DVDs and textiles.  
**Denny Long** RWA, co-executor of The Sandra Blow Estate with Jon Grimble, has a display of her work at the studio.  
*by appt*  
t 01736 797371 / 756006 / 798704  
sandrablowlowestate@gmail.com  
[www.sandrablowlow.com](http://www.sandrablowlow.com)

**(d) ST IVES SOCIETY OF ARTISTS**

Norway Square, St Ives, Cornwall TR26 1NA  
Open March-January.  
Exhibitions in **The Mariners Gallery** include Spring, Summer and Autumn Members' Shows, Two Open Shows and other guest shows.  
**The Crypt Gallery** is host to many guest exhibitors and is available to hire at certain times.  
t 01736 795582  
[www.stisa.co.uk](http://www.stisa.co.uk)

**(e) TATE ST IVES**

Porthmeor Beach, St Ives, Cornwall TR26 1TG  
[www.tate.org.uk/stives](http://www.tate.org.uk/stives)

## MAP 11 UK WEST COUNTRY



## DEVON

**(a) DRAWN TO THE VALLEY**

Tavistock Town Hall, Bedford Square, Tavistock, Devon PL19 0AU

**Artists of the Tamar Valley.** Aug 2–6.

**Open Studios.** Sep 2–10.

Almost 100 artists from the Drawn to the Valley art collective in Devon and Cornwall exhibit at Tavistock Town Hall followed by the Open Studios event in their own work spaces.

admin@drawntothevalley.co.uk

t @Drawn2Valley f Drawn-to-the-Valley

www.drawntothevalley.co.uk

**(c) THE ART ROOM**

Specialising in **painting and sculpture** by major artists working in the SW of England. Exhibition services and online sales. Contact Deborah Wood.

t 0771 848 0604

deborah@theartroomtopsham.co.uk

www.theartroomtopsham.co.uk

**(b) THE BROWNSTON GALLERY**

36 Church Street, Modbury, South Hams, Devon PL21 0QR

**Barry Kelly:** Sunny Sands – Stormy Skies. Aug 4–19.

First major solo exhibition by this talented young artist.

Burning hot sands contrast with tropical turquoise waters and stormy cloud-laden skies around the shores of

South Devon.

Mon–Sat 10–5, clo Wed at 1

t 01548 831338

art@thebrownstongallery.co.uk

f The-Brownston-Gallery

www.thebrownstongallery.co.uk

**(c) THELMA HULBERT GALLERY**

Elmfield House, Dowell Street, Honiton, Devon EX14 1LX

**Evolver Prize 2017.** Until Aug 26.

THG hosts this exhibition comprising the winning Evolver magazine cover and 99 runners up to celebrate the 100th edition of Evolver. Discover the diverse talents of Wessex-based artists.

Tue–Sat 10–5, free admn

t 01404 45006

info@thelmahulbert.com

t @ThelmaHulbert f ThelmaHulbertGallery

www.thelmahulbert.com

## EXETER

**(d) PS45 GALLERY**

45 Preston Street, Exeter, Devon EX1 1DF

**Dan Davidson:** Retrospective. Until Aug 19. \*ad

Six decades of painting. Radically diverse solutions to observed situations. Detailed map to gallery on website.

Tue–Sun 11–6.30

f dandavidsonart

www.dandavidsonart.co.uk

**(d) ROYAL ALBERT MEMORIAL MUSEUM & ART GALLERY**

Queen Street, Exeter EX4 3RX

**Sea Life:** Glimpses of the Wonderful. Until Sep 17.

A playful mix of objects, film, illustrations, live creatures and craft.

**Into the Wild Abyss.** Until Sep 3.

Gordon Cheung, Rui Matsunaga and Nahem Shoa explore nature and spirituality.

**Angie Seaway.** Jul 4–Oct 1.

Responses to the Devon landscape and coastline.

Tue–Sun 10–5, clo Mon & hols

t 01392 265858

rannm@exeter.gov.uk

t @RAMMuseum f RAMMuseum

www.exeter.gov.uk/RAMM

## DORSET

**(e) ARTWAVE WEST**

Morcombelake, Dorset DT6 6DY

Impressive **Contemporary Art Gallery** exhibiting artists

including Amy Albright, Suchi Chidambaram, Heather Duncan, Martin Goolid, Jeannette Hayes, Edward Kelly, Kathy Little, Louise McClary, Elisa McLeod, Rebecca



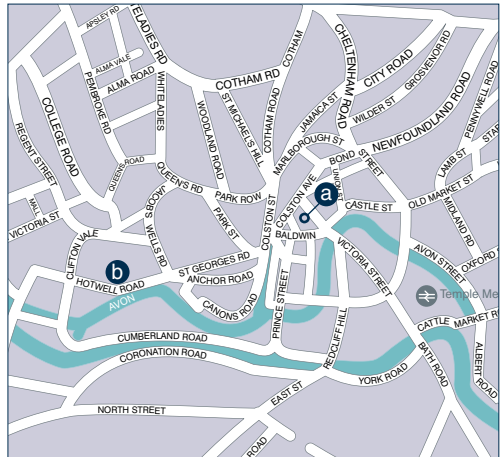
John Minton "Portrait of David Tindle as a Boy"

## THUMBnail

If any artist can be said to embody that curiously febrile mood of immediate post-war Britain in the late 1940s and early 50s, it is John Minton and, in a curious sense, that time and place marked him utterly, his brief shooting star of achievement falling to earth in 1957 when he committed suicide aged just 39, as the moment passed into the optimistic brilliance of American Abstraction and Pop. He has, in the past

appeared somewhat elusive, a mysterious and somehow incomplete figure but, as this excellent show at **Pallant House Gallery** makes clear, those 12 to 15 years of intense and prolific creativity as painter, illustrator and (gifted) teacher are there to be celebrated for their sheer fullness of expression, a vision of an era and a mood quite as complete as that of his great hero Samuel Palmer.

## MAP 12 ENGLAND BRISTOL



**a R E BUCHELI FINE ART FINE FRAMES**  
Albion House, 12A Broad Street, Bristol BS1 2HL  
[www.rebucheli.co.uk](http://www.rebucheli.co.uk)

**b LIME TREE BRISTOL**  
84 Hotwell Road, Bristol BS8 4UB  
**Summer Exhibition.** John Evans, Phil Johns, Peter King, Steven Lindsay, Céline Ranger, David Smith RSW, Peter Wileman FROI RSMa FRSA.  
Welcoming gallery in harbour-side setting.  
See also East Anglia map.  
*Tue-Sat 10-5*  
*t 0117 929 2527*  
*bristol@limetreegallery.com*  
[www.limetreegallery.com](http://www.limetreegallery.com)

Fontaine-Wolf, Paul Denham and Susan Laughton.  
Onsite car park and Art Academy.  
*Tue-Sat 10-5 t 01297 489746*  
*info@artwavewest.com*  
*t @artwavewest f ArtwaveWest*  
[www.artwavewest.com](http://www.artwavewest.com)

**f DORSET COUNTY MUSEUM**  
High West Street, Dorchester, Dorset DT1 1XA  
**David West:** Under the Surface – paintings and carvings.  
Until Jan 6.  
This exhibition brings together 70 of David West's most important works from both private and public collections, reflecting the different strands of his development as a painter, sculptor and craftsman.  
*Mon-Sat 10-5*  
*t 01305 756827*  
*shop@dorsetcountymuseum.org*  
*t @DorsetMuseum f dorsetcountymuseum*  
[www.dorsetcountymuseum.org](http://www.dorsetcountymuseum.org)

**g THE GALLERY AT 41**  
41 East Street, Corfe Castle, Wareham, Dorset BH20 5EE  
**Colour and Form.** Until Sep 2.  
A changing exhibition for the summer season embracing wonderful variety in colour and form by contemporary Dorset artists in a range of media.  
*t 01929 480095*  
*contact@galleryat41.com*  
*f TheGalleryat41*  
[www.galleryat41.com](http://www.galleryat41.com)

**h SLADERS YARD**  
West Bay, Bridport, Dorset DT6 4EL  
**Of Myths and Moons.** Until Sep 3.  
Frances Hatch paintings, Clare Trenchard sculpture and drawings, Akiko Hirai ceramics.  
**Petter Southall** furniture. Contemporary British Art, Furniture and Craft. Licensed Café. Live Evening Events.  
*Mon-Fri 10-4, Sat 10-4, Sun & BHols 12-4*  
*t 01308 459511*  
*gallery@sladersyard.co.uk*  
*t @SladersYard f SladersYard*  
[www.sladersyard.co.uk](http://www.sladersyard.co.uk)

**i TOWN MILL GALLERIES**  
Mill Lane, Lyme Regis, Dorset DT7 3PU  
Two Galleries in a converted Mill complex offering exhibitions to emerging and established artists.  
Malthouse Gallery: **Crossing the Line.** Until Aug 9.  
**Julie Oldfield.** Aug 11-23.  
**Tricia Scott and Lois Wakeman.** Aug 25-Sep 6.  
Courtyard Gallery: **Justin Clark.** Until Aug 16.  
**Chelsea Devine.** Aug 18-Sep 5.  
*Mon-Sun 10.30-4.30, free admn*  
*curatorartsguild@yahoo.co.uk*  
*t @tmaglymeregis*  
[www.townmillarts.co.uk](http://www.townmillarts.co.uk)

**j TZB SOUTHBOURNE GALLERY**  
2 Carbery Row, Southbourne Road, Bournemouth  
Dorset BH6 3QR  
Fine art gallery specialising in **original contemporary paintings** – wide range of subjects.  
*Thu/Fri 10-12.30, 2-4.30, Sat 10-1 t 01202 426967*  
*tzbteresa@gmail.com*

## SOMERSET

**k ATKINSON GALLERY**  
Millfield School, Street, Somerset BA16 0YD  
**Summer Show.** Until Aug 4. Our annual open exhibition.  
**Sculpture Park** open – please contact us before visiting.  
*t 01458 444322*  
*atkinsongallery@millfieldschool.com*  
*t @GalleryAtkinson f atkinsongallery*  
[www.atkinsongallery.co.uk](http://www.atkinsongallery.co.uk)

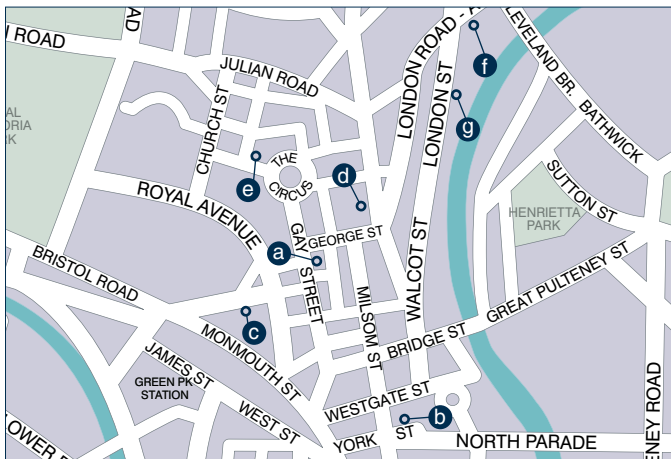
**Dan Davidson Retrospective**  
six decades of painting

Jul 27-Aug 19

PS45 Gallery  
(previously SpaceX)  
45 Preston Street  
Exeter, Devon EX1 1DF  
Tue-Sun 11-6.30  
*f dandavidsonart*  
[www.dandavidsonart.co.uk](http://www.dandavidsonart.co.uk)

Teignmouth-Dawlish Line

## MAP 13 ENGLAND BATH



**○ ANTHONY HEPWORTH FINE ART DEALERS**

Dealers in **Modern British & Contemporary Painting & Sculpture.**

We also specialise in the work of Keith Vaughan 1912-1977 and exhibit Tribal Art, ceramics and furniture.

by appt in Aug  
t 01225 447480

m 07970 480 650

anthony.hepworth@btconnect.com

[www.anthonyphepworth.com](http://www.anthonyphepworth.com)

**Ⓐ BATH CONTEMPORARY**

35 Gay Street, Bath BA1 2NT

**Nicholas Turner RWA.** Aug 7-19.  
Harbour scenes constructed of fragile line and a muted palette.

**Endré Röder.** Aug 21-Sep 2.

Elegant and contemplative portraits of feminine beauty.

**Mixed Exhibition** including work by Kristan Baggaley, Ben Kelly, Alina Maksimenko, Norma Stephenson PS,

Ellen Watson, Claire Wiltsher.

Mon-Sat 10-5

t 01225 461230

gallery@bathcontemporary.com

t @BathContemp

f bathcontemporaryart

[www.bathcontemporary.com](http://www.bathcontemporary.com)

**Ⓑ BEAUX ARTS BATH**

12/13 York Street, Bath BA1 1NG  
adjacent to Bath Abbey

**Artists of Fame and Promise.**

Until Aug 26.

Including Simon Allen, Akash Bhatt, Beth Carter, Andrew Crocker, Stewart Edmondson, Anna Gillespie, Christopher Marvell, Paul Mount, Anthony Scott, Helen Simmonds, Jason Walker, Pieter Vanden Daele. Ceramics by Rob Whelpton.

Mon-Sat 10-5, free admn

t 01225 464850

info@beauxartsbath.co.uk

t @beauxartsbath

f Beaux-Arts-Bath

[www.beauxartsbath.co.uk](http://www.beauxartsbath.co.uk)

**Ⓒ BONHAMS**

Queen Square House, Charlotte Street, Bath BA1 2LL

**Fine Art Auctioneers and Valuers.**

t 01225 788988

**Ⓓ DAVID SIMON CONTEMPORARY**

4 Bartlett Street, Bath BA1 2QZ

**Summer Exhibition.** Aug 11-Sep 23.

A rolling exhibition featuring the latest work by Julia Cooper, Luke Frost, Emma McClure, Myles Oxenford, Jackie Phillip. A wonderful variety of different approaches, exploring semi-figurative styles.

Mon-Sat 10-6, Wed 2-6

t 01225 460189

gallery@davidsimoncontemporary.com

t @davidsimontweet

f davidsimoncontemporary

[www.davidsimoncontemporary.com](http://www.davidsimoncontemporary.com)

**Ⓔ GALLERY NINE**

9B Margarets Buildings, Bath BA1 2LP

[www.gallerynine.co.uk](http://www.gallerynine.co.uk)

**Ⓕ LANE HOUSE ARTS**

5 Nelson Place East, Bath BA1 5DA

Wed-Fri 10-5.30, Sat 10.30-6

& by appt t 07767 498403

info@lanehousearts.co.uk

t @LaneHouseArts

f LaneHouseArts

[www.lanehousearts.co.uk](http://www.lanehousearts.co.uk)

**Ⓖ NICK CUDWORTH GALLERY**

5 London Street, Bath BA1 5BU  
top of Walcot Street

Monthly exhibitions of **paintings and prints** by **Nick Cudworth** reflecting

his interest in music and landscape, specialising in paintings of Bath and surrounding area. Nick paints in his studio to the rear of the gallery and is able to discuss his work with visitors.

Tue-Sat 10-5

t 01225 445221 m 07968 047639

gallery@nickcudworth.com

[www.nickcudworth.com](http://www.nickcudworth.com)



Dan Davidson 'Office Blossom'

## THUMBnail

Born in 1931, Dan Davidson spent 10 years of his early life in an orphanage of Victorian-sounding primitiveness before finally escaping, first as an aeronautical engineering apprentice and technical illustrator. He escaped from that in turn finally getting to art school, and in 1966, a teaching post at Exeter College of Art where he worked until retirement in 1990. He has, in short, been painting since the early 1960s and, on the

evidence of the moving journal he has produced to accompany his current show at **PS45 Gallery**, it has provided the imaginative cornerstone of his life. In other less reflective hands this could be expressive disaster but Davidson is always an alert, disciplined artist, his shifts of style from Vuillard-esque intimacy and Bombergian power to, finally, a quiet, strong realism, always acts of necessity. **NU**

## MAP 14 ENGLAND THAMES VALLEY, LONDON NORTH & WEST



### BERKSHIRE

**(c) THE CONTEMPORARY FINE ART GALLERY ETON**  
 31 High Street, Eton, Berks SL4 6AX  
**Scottish Contemporary artists & Zimbabwean Stone Sculpture.**

Various artists including Chung Shek, James Doran Webb, Peter Howson OBE and many others. Invitations/catalogues on request. Please view our website.

daily 9–5  
 t 01753 854315 (day) 07831 822641 (eve)  
 mail@cfag.co.uk  
 www.cfag.co.uk

**(d) STANLEY SPENCER GALLERY**

High Street, Cookham, Berks SL6 9SJ  
**An Artistic Affair: New exhibition. Until Oct 1.**  
 'I haven't any inhibitions at all' declared Daphne Charlton, eighteen years younger and married when their affair began.

Previously unpublished material here shows a joyous union that nurtured and sustained Stanley.

Tue–Sun 10.30–5 & BHols  
 Nov–Mar Thu–Sun 11–4.30  
 t 01628 471885 (info & group bookings)  
 www.stanleyspencer.org.uk

### OXFORDSHIRE

**(a) BOHUN GALLERY**  
 15 Reading Road, Henley-on-Thames, Oxon RG9 1AB

**Artists of Fame & Promise. Until Aug 12.**  
 Including work by Peter Blake, Marj Bond, Joyce Cairns, Mary Fedden, Elisabeth Frink, Maggi Hambling, John Piper, Julian Trevelyan and introducing Sky Landscape Winners Nerine Tassie and Richard Allen.  
 Tue–Sat 10–5, clo 1.15–2.15  
 t 01491 576228

art@bohungallery.co.uk  
 t @bohungallery  
 f BohunGallery  
 www.bohungallery.co.uk

**(b) MODERN ARTISTS GALLERY**

High Street, Whitechurch on Thames, Oxon RG8 7EX  
**Paintings** – Stuart Buchanan, Alice Cescatti, Paul Kessling, Steve Whitehead, Paula Zimmermann, Paul Wright, Ashley Hanson. Through Aug.

**Edition Prints** – Kate Kessling, Kim Maher, Sonia Rollo. Please phone before visiting. Through Aug.

Tue–Fri 10–5, Sat 10–4 or by appt t 0118 984 5893  
 info@modernartistsgallery.com  
 t @modernartists  
 f modernartistsgallery  
 www.modernartistsgallery.com



Nicholas Turner  
 'Fisherman and Buoy'  
 40 x 40cm  
 Bath Contemporary  
 (see listing on facing page)



## TOPtweet

Bee finds inspiration in the wave battered shoreline. "Our lives are transient, but the ocean remains – ceaseless – constant. We leave nothing behind to mark our passing save a jumble of evocative fragments, which are eventually reconstructed by decay and thrown up by the changing tides. In this, our detritus, I see our real colours." Exhibiting at **The Albany Gallery.**

**TOP TWEET in July**  
 as Galleries went to press . . .

- **Bee Adams**
- 'Broken'
- views: 1.3k
- likes: 14 • retweets: 9

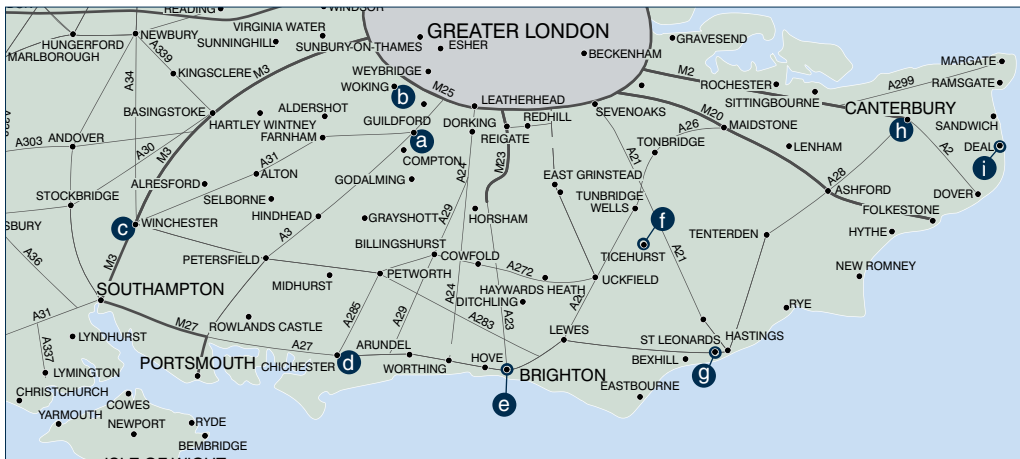
@art\_mag followers: 7.5k

July tweet views: 45k

Follow @art\_mag

Listed new shows tweeted daily

# MAP 15 ENGLAND SOUTH



## SURREY

### **○ BELGRAVIA GALLERY**

Belgravia Gallery in the Surrey Hills  
 Exhibition of gallery artists at our Surrey Hills Gallery.  
**John Illsley, Monroe Hodder, Lesley Thiel** and others.  
 Contact us to book an appointment.  
[laura@belgraviagallery.com](mailto:laura@belgraviagallery.com)  
[www.belgraviagallery.com](http://www.belgraviagallery.com)

### **Ⓐ GUILDFORD HOUSE GALLERY**

155 High Street, Guildford, Surrey GU1 3AJ  
**Dialogues: A Quilt Art exhibition. Until Sep 10.**  
 A group of professional quilt artists from Britain, Ireland, Belgium, Denmark, Germany, Hungary, the Netherlands and America bring a distinctive approach to their diverse, dynamic and challenging work.  
*Mon-Sat 10-4.45, Sun 11-4 (May-Sep), free admn*  
*t 01483 444751*  
[heritageservices@guildford.gov.uk](mailto:heritageservices@guildford.gov.uk)  
*t @guildford\_s f Guildford'sHeritage*  
[www.guildford.gov.uk/guildfordhouse](http://www.guildford.gov.uk/guildfordhouse)

### **Ⓑ THE LIGHTBOX**

Chobham Road, Woking, Surrey GU21 4AA  
[www.thelightbox.org.uk](http://www.thelightbox.org.uk)

## HAMPSHIRE

### **Ⓒ THE MINSTER GALLERY**

3a Great Minster Street, Winchester, Hants SO23 9HA  
 Minster Gallery is showing a selection of work from our

Gallery artists both **British and International** contemporary painters and sculptors. Through Aug.  
 Please view our website for opening times.  
*t 01962 877601*  
[info@minstergallery.com](mailto:info@minstergallery.com)  
[www.minstergallery.com](http://www.minstergallery.com)

## WEST SUSSEX

### **Ⓓ CANDIDA STEVENS GALLERY**

12 Northgate, Chichester, W Sussex PO19 1BA  
**The Land. Until Aug 27.**  
 Five contemporary artists inspired by the South Downs and South Coast – Kate Boucher, Polly Dutton, Rob Lyon, Gina Parr and Juliet Robertson.  
 Sculpture by Hamish Mackie.  
*Wed-Sat 10-5*  
*t 01243 528401*  
[cs@candidastevens.com](mailto:cs@candidastevens.com)  
*t @Candida Stevens*  
[www.candidastevens.com](http://www.candidastevens.com)

### **Ⓓ PALLANT HOUSE GALLERY**

9 North Pallant, Chichester, W Sussex PO19 1TJ  
**John Minton: A Centenary. Until Oct 1.**  
 A major exhibition marking the centenary of the birth of the charismatic and complex British artist John Minton (1917-1957).  
*Tue-Sat 10-5, Thu 10-8, Sun/BHols 11-5*  
*t 01243 774557*  
[www.pallant.org.uk](http://www.pallant.org.uk)



from left

Judi Green  
 'Seeing Differently'  
 Gregory Gallery (see listing on map 9)

Steve Russell  
 'Botanical Studies I'  
 Gallery Pangolin (see listing on map 8)

## EAST SUSSEX

**e 35 NORTH CONTEMPORARY FINE ART**  
35 North Road, Brighton, E Sussex BN1 1YB

**John Whiting:** Work in Progress.  
Work in Progress is an evolving exhibition with the artist producing new work in the gallery and his adjoining studio space during the course of the show. Exhibition extended.

Thu–Sat 11–5.30  
t 07792 058039  
sw@sharonwhiting.com  
t @35NorthGallery  
[www.35NorthGallery.com](http://www.35NorthGallery.com)

**f ARTICHOKE GALLERY**  
Church Street, Ticehurst, E Sussex TN5 7AE

**Across The Water.** Until Sep 23.  
Rivers and Seascapes and Foreign Lands.  
Tue–Sat 9.30–4.30

t 01580 200905  
artichokegallery@gmail.com  
t @ArtichokeGlrY f ArtichokeGallery  
[www.artichokegallery.co.uk](http://www.artichokegallery.co.uk)

**e CAMERON CONTEMPORARY ART**  
1 Victoria Grove, 2nd Avenue, Brighton and Hove  
Sussex BN3 2LJ

**The Colour of Summer.** Our annual summer show celebrates the season with works full of colour and quality.  
Mon–Sat 10.30–5, Sun & BHols 12–5

t 01273 727234  
info@cameroncontemporary.com  
t @cameronart10  
[www.cameroncontemporary.com](http://www.cameroncontemporary.com)

**g THE GALLERY AT HASTINGS ARTS FORUM**  
36 Marina, St Leonards on Sea, E Sussex TN38 0BU  
**Rising Talent:** Young and Emerging Artists. Until Aug 6.  
**Lorain Mailer and Sally Meakins:** Inverse Reflections.  
Aug 8–Sep 3.

Mailer and Meakins investigate and respond to their shared interest in how artists experience, explore, represent and communicate ideas within a gallery space.  
**In the Light of Surrealism 2.** Aug 8–Sep 3.

Group show of work influenced by the Surrealist movement.  
Tue–Sun 11–5 t 01424 201636  
info@hastingsartsforum.co.uk  
[www.hastingsartsforum.co.uk](http://www.hastingsartsforum.co.uk)

## KENT

**h LILFORD GALLERY**  
3 Palace Street, Canterbury, Kent CT1 2DY

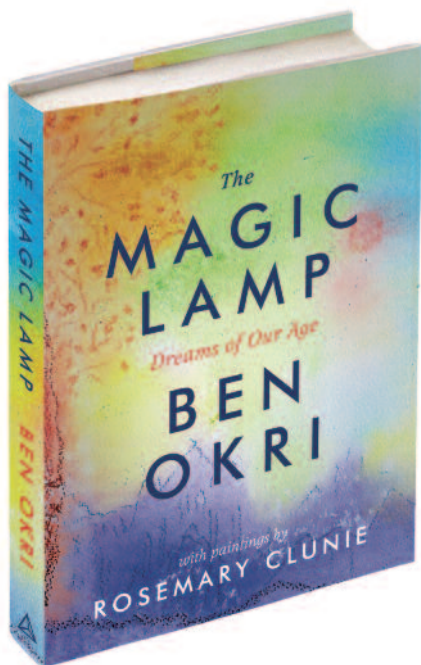
Mon–Sat 9.30–5, Sun 11–4 t 01227 639086  
mail@lilfordgallery.com  
[www.lilfordgallery.com](http://www.lilfordgallery.com)

**LILFORD FRAMING**  
76 Castle Street, Canterbury CT1 2QD  
Mon–Sat 9.30–5 t 01227 766616  
mail@lilfordframing.com  
[www.lilfordframing.com](http://www.lilfordframing.com)

**i LINDEN HALL STUDIO**  
32 St George's Road, Deal, Kent CT14 6BA

**John Copnall 1928–2007.** Paintings. Aug 6–Sep 3.  
The dynamics of colour accompanied by Edward Bainbridge Copnall woodcarvings.

Tue–Sat 10–4, Sun 11–2 or by appt t 01304 360411  
info@lindenhallstudio.co.uk  
t @Studio-Linden f Linden-Hall-Studio  
[www.lindenhallstudio.co.uk](http://www.lindenhallstudio.co.uk)



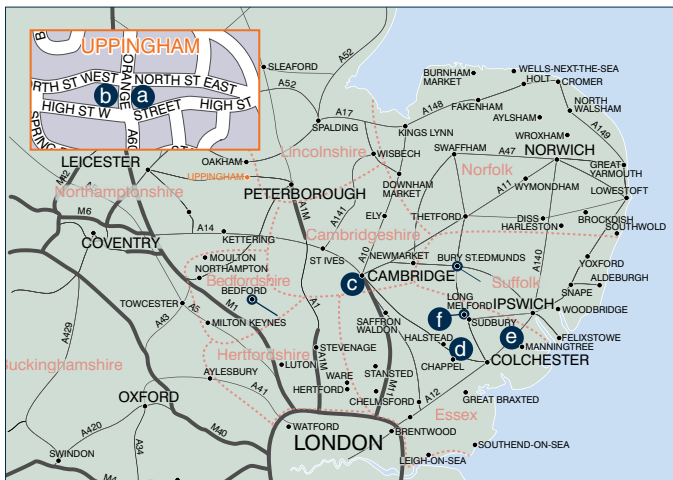
25 STORIES  
25 PAINTINGS  
5 YEARS TO WRITE  
10 YEARS TO PAINT

An extraordinary collaboration between artist and artist: the Booker Prize winning writer Ben Okri and Rosemary Clunie, the painter. Together they have created a world and peopled it with dreams.

The Magic Lamp by Ben Okri and Rosemary Clunie (Head of Zeus) publishes 7th September 2017 in hardback and ebook.



# MAP 16 ENGLAND EAST ANGLIA



**(e) NORTH HOUSE GALLERY**  
 The Walls, Manningtree, Essex  
 CO11 1AS  
**Summer Light.** Until Aug 26.  
 Evolving thematic show. Artists include Norman Ackroyd, Daisy Cook, Gwenyth Fugard, Jason Hicklin, Melvyn King, Sara Lee Roberts, Ffiona Lewis, Sibylla Martin, Julian Meredith, Dina Southwell.  
*Sat or by appt* t 01206 392717  
 mail@northhousegallery.co.uk  
 t @NorthHouseGal  
 www.northhousegallery.co.uk

**SUFFOLK**  
**(f) LIME TREE LONG MELFORD**  
 Lime Tree House, Hall Street, Long Melford, Suffolk CO10 9JF  
**Down by the Shore.** Aug 4–Sep 4.  
 Judith Bridgland, John Evans, Ian Hay ARCA DU (Essex), Sylvia Paul, Rhonda Smith, David Smith RSW, Graham Webber ROI AIEA EAGMA and Peter Wileman FROI RSMa FRSA.  
 Welcoming gallery in picturesque village. See also Bristol.  
*Tue–Sat 10–5*  
 t 01787 319046  
 info@limetreegallery.com  
 www.limetreegallery.com

**RUTLAND**  
**(a) GOLDMARK GALLERY**  
 14 Orange Street, Uppingham  
 Rutland LE15 9SQ  
**20th Century and Contemporary Art.** \*ad  
*Mon–Sat 9.30–5.30, Sun pm & Bhols*  
 t 01572 821424  
 info@goldmarkart.com  
 www.goldmarkart.com

**(b) WOODBINE CONTEMPORARY ARTS**  
 7 Orange Street, Uppingham, Rutland  
 LE15 9SQ  
**Julie Needham: Aping the Human.**  
 New works. Aug 5–26.  
**Gallery Artists.** Aug 5–26.  
 Gallery closed until Aug 5.  
*Fri/Sat 11–5 & by appt*  
 t 07980 167404  
 yorath@woodbinecontemporaryarts.co.uk  
 www.woodbinecontemporaryarts.co.uk

**CAMBRIDGESHIRE**  
**(c) CAMBRIDGE BOOK & PRINT GALLERY**  
 49 Newnham Road, Cambridge  
 Cambs CB3 9EY  
**Modern British and International Artists.**  
 Fine Drawings, Original Prints and Ceramics by leading British Artists.  
*Tue–Sat 10.30–5*  
 t 01223 694264  
 enquiries@cambridgeprints.com  
 www.cambridgeprints.com

**ESSEX**  
**(d) CHAPPEL GALLERIES**  
 Colchester Road, Chappel  
 Essex CO6 2DE  
**Mark Goldworthy: Sculpture and paintings.** Until Aug 13.  
*Wed–Sun 10–5 & by appt*  
 t 01206 240326  
 info@chappellalleries.co.uk  
 www.chappellalleries.co.uk

Paul Furneaux  
 'Sumi-rain'  
 Pittenweem Arts Festival  
 (listing on map 1 and editorial on page 11)



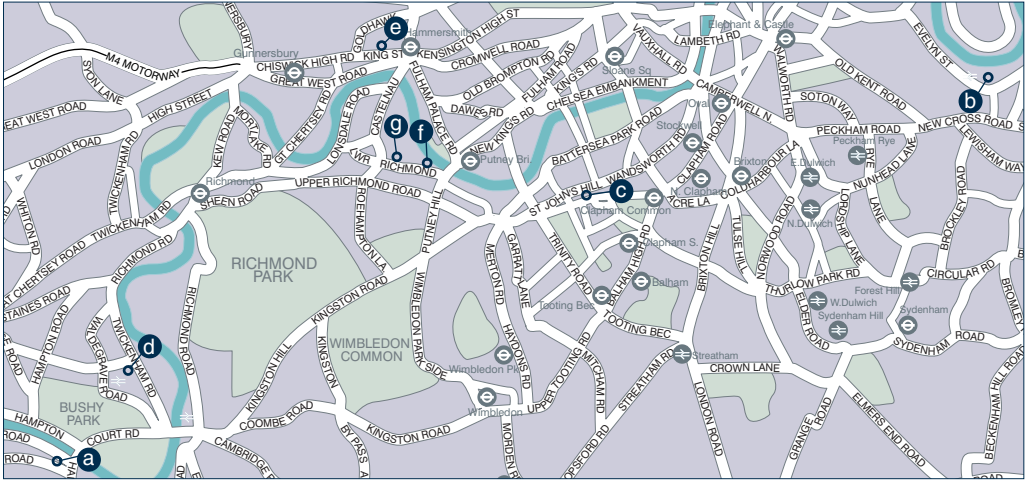
Mark Goldworthy 'Chorus'

## THUMBnail

In his catalogue introduction for Mark Goldworthy's exhibition of paintings and sculptures at the Chappel Galleries, writer Louis de Bernières shrewdly characterises him as 'an artisan artist' a term used benignly to characterise both the wide range and technical versatility of his work (he even makes exquisitely carved Romany caravans) and also, as this show makes plain, his giving to whatever medium he

chooses, a powerful feeling for the sense and sensibility of his chosen materials. The sculptures, in bronze, stone and wood and, mostly of the human figure, show this with particular clarity – the surfaces of the bronzes rippling with physical and emotional energy, the smoother surfaces of stone and alabaster often exuding an altogether more inward serenity and tautness, the wooden pieces weathered with feeling. **NU**

## MAP 17 LONDON SOUTH &amp; WEST



**○ THE CYNTHIA CORBETT GALLERY**

London SW – by appt only  
**Young Masters: Group Show.**  
 Until Sep 8  
 At the Royal Over-Seas League,  
 Over-Seas House, Park Place,  
 St James's, London SW1A 1LR.  
*Mon–Fri 11–5.30 & w/e by appt*  
*t 020 8947 6782*  
*info@thecynthiacorbettgallery.com*  
*t @corbettgallery*  
**f TheCynthiaCorbettGallery**  
**www.young-masters.co.uk**  
**www.thecynthiacorbettgallery.com**

**Ⓐ THE FOUNTAIN GALLERY**

26 Bridge Rd, Hampton Court  
 Surrey KT8 9HA  
**Elaine Coles, Simon Dray and Sally Dray.** Subject Matters.  
 Until Aug 6.  
 An exhibition of paintings, prints and ceramics.  
**John Walsom.** Aug 8–20.  
 Urban and rural landscapes, many painted outdoors in all weathers.  
**Carol Grant and Carol Morgan:** Intuition. Aug 22–Sep 3.  
 Both artists work intuitively with colour and texture.  
*Tue–Sun 11.30–5.30*  
*t 020 8941 5865*  
*info@fountaingallery.co.uk*  
*t @FountainBonanza*  
**www.fountaingallery.co.uk**

**Ⓑ GREENWICH PRINTMAKERS GALLERY**

1A The Market, Greenwich, London SE10 9HZ  
**Clare Grossman.** Until Aug 6.  
**Jennie Ing.** Aug 8–27.  
**Joanna Irvin.** Aug 29–Sep 17.  
 Original Artist Prints at affordable prices. Greenwich Printmakers is situated in the heart of Greenwich, in the old covered fruit market which also houses many specialist shops and

a craft and antiques market.  
**gallery@greenwich-printmakers.co.uk**  
**t @Greenwichprints**  
**f GreenwichPrintmakers**  
**www.greenwich-printmakers.co.uk**

**Ⓒ INGO FINCKE GALLERY**

24 Battersea Rise, London SW11 1EE  
 We represent new and established contemporary artists, concentrating mainly with oil on canvas.  
 With a welcoming atmosphere we attract first time buyers and collectors alike.  
*Mon–Sat 10.30–5.30*  
*t 020 7228 7966*  
**www.ingofincke.com**

**Ⓓ LANDMARK ARTS CENTRE**

Ferry Road, Teddington  
 Middlesex TW11 9NN  
**Autumn Fair.** Oct 13–15. Details on the website.  
*t 020 8977 7558*  
**ben@landmarkartscentre.org**  
**t @LandmarkArts**  
**f LandmarkArtsCentre**  
**www.landmarkartscentre.org**

**○ PORTAL PAINTERS**

59 Overstone Road, London W6 0AD  
 Specialists in fine figurative paintings with a surreal and sometimes humorous flavour.  
**Beryl Cook** signed limited edition prints and original paintings.  
 We attend London Art Fair (Jan), AAF Battersea (Mar), Lapada Fair in Berkeley Square (Sep) and 20/21 British Art Fair (Sep).  
*viewings by appt only*  
*t 07801 668237*  
**jess@portalpainters.co.uk**  
**t @PortalPainters**  
**www.portalpainters.co.uk**  
**www.berylcook.org**

**Ⓔ POSK GALLERY**

238-246 King Street, London W6 0RF  
**EWAAE 2017.** Aug 5–11.  
 Masami Hayashi, Masahiro Okuno, Koki Shimokita, Maki Takashima, Yoko Nishimura, Fumika Moritou, Maki Shirokihara, Keiichi Kaneko, Katsumi Uchida, Mami Saito, Maiko Oue, Ji Seon Lee, Stefania Pinsone.  
**Bezyanur Kaplan:** EWAAC prize winner solo show. Aug 12–18.  
**Asayo Kawase:** digital art. Aug 19–25.  
**Brian Marsh:** solo exhibition. Aug 27–Sep 8.  
 Paintings, mixed media, interactive activities for children.  
*daily 10–9*  
*t 020 8741 1940*  
**www.posk.org/c5/en/gallery**

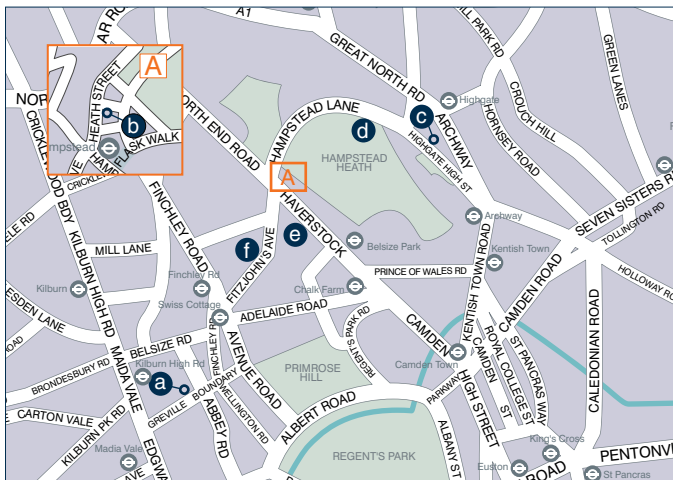
**Ⓕ THE RUSSELL GALLERY**

12 Lower Richmond Road  
 Putney, London SW15 1JP  
**Mixed Summer Exhibition.**  
 Until Sep 9.  
 Constantly rotating show of over 40 artists new and established.  
*Tue–Sat 10–5.30*  
*t 020 8780 5228*  
**russgallery@aol.com**  
**www.russell-gallery.com**

**Ⓖ WILL'S ART WAREHOUSE**

180 Lower Richmond Road  
 Putney SW15 1LY  
**There's No Place Like Home.**  
 Until Sep 18.  
 The gallery welcomes several local artists for our summer show, including Margaret Knott, Sam Gare, Susie Nathanson, Martin Grover and Beth Horner.  
*daily 10.30–6*  
*t 020 8246 4840*  
**info@wills-art.com**  
**t @wills-art**  
**f Will'sArtWarehouse**  
**www.wills-art.com**

## MAP 18 LONDON HAMPSTEAD & CAMDEN



**a BEN URI GALLERY & MUSEUM**

Art. Identity. Migration  
108a Boundary Road, London  
NW8 0RH

**Art Out of the Bloodlands:**

A Century of Polish Artists in Britain.  
Until Sep 17.  
Second exhibition in Ben Uri series on refugee and migrant artists, highlighting the Polish contribution in Britain over the last century.  
Mon-Fri 10-5.30, Sat/Sun 11-5  
free admn

t 020 7604 3991  
admin@benuri.org  
t @BenUriGallery  
f BenUriGallery  
www.benuri.org.uk

**b THE CATTO GALLERY**

100 Heath Street, London  
NW3 1DP

**Mixed Exhibition:** gallery artists.

Until Aug 31.  
Mon-Sat 10-6, Sun 12.30-6  
t 020 7435 6660  
art@cattogallery.co.uk  
www.cattogallery.co.uk

**c HIGHGATE CONTEMPORARY ART**

26 Highgate High Street, London  
N6 5JG

**Summer Exhibition.** Until Aug 27.

A mixed show of paintings and ceramics by gallery regulars and a few new additions such as the very talented, Daniel Sequeira.

Tue-Sat 11-7, Sun 11-5 & by appt  
t 020 8340 7564  
info@highgateart.com  
t @highgateart  
www.highgateart.com

**d HIGHGATE GALLERY**

11 South Grove, London N6 6BS

Gallery closed Aug; reopening Sep. **Katy Sayers Green:** Ephemeral yet Eternal. Sep 15-28.

An exhibition of encaustic, oil and acrylic paintings.  
tube Archway or Highgate buses 143, 210 & 271 from Archway tube to Highgate Village  
Tue-Fri 1-5, Sat 11-4, Sun 11-5  
free admn t 020 8340 3343  
gallery@hlsi.net  
www.hlsi.net

**e SYLVESTER FINE ART**

64 Belsize Lane, London  
NW3 5BJ

Principally exhibiting a variety of **20th and 21st century British and European** artists, including the modern masters, alongside a range of contemporary studio ceramics.

Wed-Fri 11-6.30, Sat 10-6, Sun 10-4  
& by appt  
t 020 7443 5990  
info@sylvesterfineart.co.uk  
t @sylvesterart  
f SylvesterFineArt  
www.sylvesterfineart.co.uk

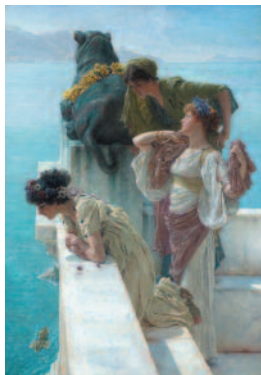
**f TOM MERRIFIELD GALLERY**

37c Fitzjohns Avenue  
Hampstead, London NW3 5JY

Showing a **Permanent Exhibition** of Sculpture, Drawings and Prints by **Tom Merrifield.**

by appt only  
t 020 7431 0794  
online@tommerifield.co.uk  
www.tommerrifield.co.uk

Alicia France  
'Blue Turban'  
5th Base Gallery  
(see listing on map 28)



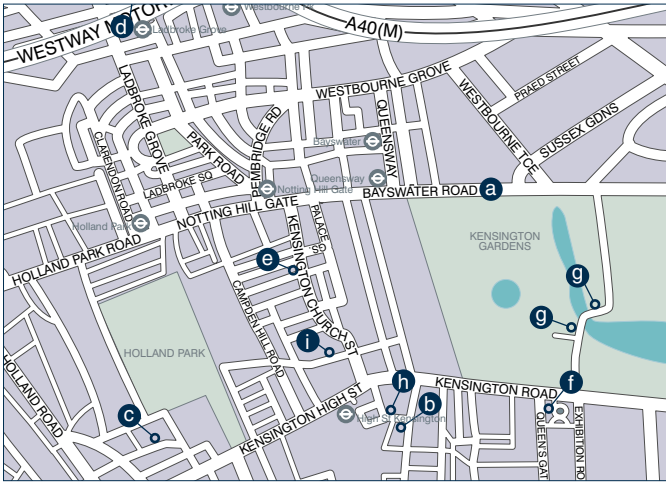
Lawrence Alma-Tadema 'Coin of Vantage'

## THUMBnail

With their intense interest in domesticity and an educational system infused with a fascination for classical antiquity, it was hardly surprising the Victorians welcomed Lawrence Alma-Tadema with such remarkable enthusiasm – they wanted to know what home life in the Classical world might look like and he gave them the imaginative means for doing so. But the story is more interesting than that as the superb

exhibition of his work at **Leighton House Museum** (built by his friend and fellow artistic celebrity, Frederic Leighton) makes beautifully clear. Entitled 'At Home in Antiquity', it traces the extraordinary story of how this Dutch-born and trained painter (and his family) took London by storm in the 1870s and went on to infuse 20th century culture as the imagination behind Hollywood epics like 'Ben Hur'. **NU**

## MAP 19 LONDON KENSINGTON &amp; NOTTING HILL

**a BAYSWATER ARTISTS**

Bayswater Road, London W2  
On the railings in Bayswater Road  
between Lancaster Gate tube and  
Queensway.

**Original art** all displayed by artists  
themselves for you to buy and take  
away.

Sun 10-5

t 07753 387050

secretary.bayswaterartists@gmail.com

t @BayswaterART

[www.bayswater-road-artists.co.uk](http://www.bayswater-road-artists.co.uk)

**b GALLERY 19**

19 Kensington Court Place  
London W8 5BJ

Bespoke picture framer and art  
gallery specialising in **architectural  
views** of Kensington, London and  
Italy.

The permanent collection features  
original paintings, Limited Edition  
prints and photographs, reproduction  
maps and globes of the world,  
leather-bound journals, architectural  
models, unique hand-crafted objects  
from Italy and house portraits

available by commission.

Mon-Sat 10-6

t 020 7937 7222

info@gallery19.com

[www.gallery19.com](http://www.gallery19.com)

**c LEIGHTON HOUSE MUSEUM**

12 Holland Park Road, London  
W14 8LZ

Former home and studio of leading  
Victorian artist Frederic, Lord  
Leighton (1830-96).

**A private palace of art**, built to  
designs of George Aitchison,  
extended and embellished over a 30  
year period.

Admn £9; concs £7

National Trust members £3.50

Art Fund members free

daily 10-5.30, clo Tue

t 020 7602 3316

[www.leightonhouse.co.uk](http://www.leightonhouse.co.uk)

**d PALM TREE GALLERY**

291 Portobello Road, London  
W10 5TD

**Georgie Mason:** Landscape from  
South America. Until Aug 10. British

land/seascape painter, Georgie  
Mason, uses a variety of unusual  
materials including polyfilla and mud  
layered onto her oils. The paintings  
are luminous, heavily-worked and  
thick with impasto marks.

Mon-Sat 11-6

t 020 8964 8153

georgia@palmtreegallery.com

[www.palmtreegallery.com](http://www.palmtreegallery.com)

**e THE ROWLEY GALLERY**

115 Kensington Church Street  
London W8 7LN

**Mixed Exhibition** of small  
contemporary paintings and prints.  
Bespoke picture framers since 1898.  
Hand-finished conservation framing,  
gilding and veneering. \*ad  
tube Notting Hill Gate

Mon-Fri 10-6, Sat 11-4.30

t 020 7727 6495

[www.rowleygallery.co.uk](http://www.rowleygallery.co.uk)

**f ROYAL COLLEGE OF ART**

Kensington Gore, London SW7 2EU

[www.rca.ac.uk](http://www.rca.ac.uk)

**g SERPENTINE GALLERY**

Kensington Gdns, London W2 3XA

[www.serpentinegallery.org](http://www.serpentinegallery.org)

**h THACKERAY GALLERY**

18 Thackeray St, London W8 5ET

Thackeray Gallery is closed for our  
seasonal break until Aug 22. We are  
available by appointment. Upcoming  
show in Sep is **David Klein MRBS**.

Tue-Fri 10-6, Sat 11-4

t 020 7937 5883

enquiries@thackeraygallery.com

t @thackeraygall

[www.thackeraygallery.com](http://www.thackeraygallery.com)

**i WILLER**

12-14 Holland St, London W8 4LT

**Mixed furniture and lighting**,  
including the Paul Mathieu pieces  
selected by Architectural Digest France  
for their Collections 2017 exhibition at  
the Musee d'Art Moderne, Paris.

Mon-Fri 10-6, Sat 10-5 & by appt

t 020 7937 3518

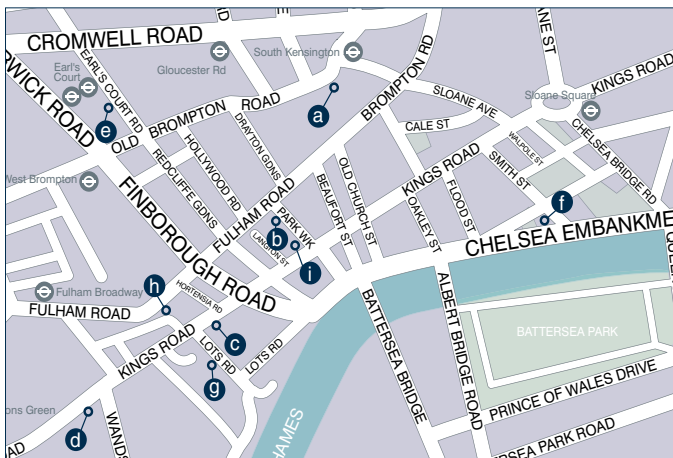
info@willer.co.uk

[www.willer.co.uk](http://www.willer.co.uk)

Rowley  
Gallery

[www.rowleygallery.co.uk](http://www.rowleygallery.co.uk)

## MAP 20 LONDON CHELSEA &amp; FULHAM



**(a) CHRISTIE'S SOUTH KENSINGTON**  
85 Old Brompton Rd, London SW7 3LD  
[www.christies.com](http://www.christies.com)

**(b) CRICKET FINE ART**  
2 Park Walk, London SW10 0AD  
**Summer Exhibition.** Until Aug 31.  
New work by gallery artists for a summer show.  
*Mon–Fri 10–6, Sat 10–5*  
*t 020 7352 2733 m 07778 568367*  
*info@cricketfineart.co.uk*  
*t @cricketfineart*  
*f CricketFineArt*  
[www.cricketfineart.co.uk](http://www.cricketfineart.co.uk)

**(c) GAGLIARDI GALLERY**  
509 Kings Road, Chelsea  
London SW10 0TX  
Situating for more than 35 years in the heart of Chelsea you can find anything from **Italian and French new impressionist landscapes to hyper-realist figurative paintings.** Extensive website.  
*Mon–Sat 10–7, Sun 11–5*  
*t 020 7352 3663*  
[www.gagliardi.org](http://www.gagliardi.org)

**(d) GALLERY FIFI**  
69 New Kings Road, Chelsea  
London SW6 4SQ  
**Ginette Fiandaca:** showing an eclectic collection of contemporary mixed media work on large canvases in a studio setting.  
*Mon–Thu 2–5 & by appt*  
*t 020 7371 8892*

**(e) GALLERY 286**  
286 Earls Court Road, London SW5 9AS  
Gallery closed until Sep.  
*Wed 12–6 & by appt*  
*t 07747 807576*  
*jross@gallery286.com*  
**f Jonathan Ross's Gallery286**  
[www.gallery286.com](http://www.gallery286.com)

**(f) THE LONDON SKETCH CLUB**  
7 Dilke Street, London SW3 4JE  
Open life drawing resumes Sep. Working in the unique surroundings of the 19th century Studio which provides a sociable but focussed atmosphere in which to draw. Booking essential, please email for

more details.  
*Thu 6.30–8.45*  
[draw@londonsketchclub.com](mailto:draw@londonsketchclub.com)  
[www.londonsketchclub.com](http://www.londonsketchclub.com)

**(g) LOTS ROAD AUCTIONS**  
71–73 Lots Road, London SW10 0RN  
**Auctioneers and Valuers.**  
**Auctions:**  
Modern and Contemporary Furnishings, Antique Furniture, Carpets, Pictures, Objets d'Art, Lighting and Mirrors.  
Sales every Sunday from 12.  
*Viewing Wed 6–8, Thu 9–6, Fri 9–5*  
*Sat 10–5, Sun from 5*  
*t 020 7376 6800*  
*info@lotsroad.com*  
[www.lotsroad.com](http://www.lotsroad.com)

**(h) PIERS FEETHAM GALLERY**  
475 Fulham Road, London SW6 1HL  
Gallery closed for Aug. Piers Feetham Framing and Restoration remains open but please check 020 7381 5958 for times.  
*Tue–Fri 10–6, Sat 10–1*  
*t 020 7381 3031*  
[www.piersfeethamgallery.com](http://www.piersfeethamgallery.com)

**(i) TANYA BAXTER CONTEMPORARY**  
436 Kings Road, Chelsea, London SW10 0LJ  
**Mixed Exhibition** including works by M F Husain, S H Raza, F N Souza, Ling Jian, Zeng Chuanxing, Banksy, Pip Todd Warmoth and Sacha Jafri.  
*by appt*  
*t 020 7351 1367 m 07961 360407*  
*tanya@tanyabaxtercontemporary.com*  
[www.tanyabaxtercontemporary.com](http://www.tanyabaxtercontemporary.com)



John Copnall 'Red, Blues and Black Stripes'

## THUMBnail

In some ways John Copnall's was a career of two halves – early student acclaim as a figurative painter at the RA Schools in the early 1950s followed by a racketsy time as a 'boho' painter in Spain, morphing, by the late 60s, into brief mid-career recognition as an abstract colourfield painter of some distinction back in the UK. He was taken up briefly by the Arts Council, before the fashion for abstraction faded again in the late

1970s. John Copnall remained true to this way of working for the rest of his life (he died in 2007), though his fiery, Spanish-influenced colours never quite gained him the critical recognition he deserved. Things are changing however, this show at the enterprising **Linden Hall Studio** (with woodcarvings by his father Edward Bainbridge Copnall) is a welcome reminder of his considerable gifts.

## MAP 21 LONDON KNIGHTSBRIDGE &amp; BELGRAVIA



**a 12 STAR GALLERY**  
Europe House, 32 Smith Square  
London SW1P 3EU  
**Jérémie Jung:** Kihnu – The Isle of Women. Until Sep 15.  
Photographs by Jérémie Jung.  
Organised by the Embassy of Estonia.  
Mon–Fri 10–6  
t 020 7973 1992  
[www.europa.eu/!QY43Qk](http://www.europa.eu/!QY43Qk)

**b BROWNSWORD HEPWORTH**  
15 Walton Street, London SW3 2HX  
A changing show of selected **Modern British** works and contemporary painting and sculpture by gallery artists.  
Mon–Fri 10–6, Sat by appt  
t 020 3887 0687  
manager@brownswordhepworth.co.uk  
[www.brownswordhepworth.co.uk](http://www.brownswordhepworth.co.uk)

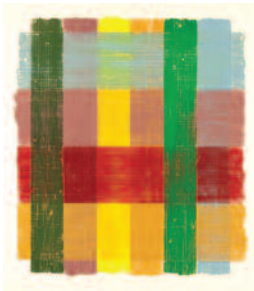
**c CADOGAN CONTEMPORARY**  
87 Old Brompton Road, London SW7 3LD  
**Summer Exhibition.** Until Sep 1.  
Mixed exhibition showcasing paintings and sculpture from British and International artists.  
Mon–Fri 10–6, Sat 11–6 or by appt  
t 020 7581 5451  
info@cadogancontemporary.com  
t @Cadogan-Gallery  
[www.cadogancontemporary.com](http://www.cadogancontemporary.com)

**d CRANE KALMAN**  
178 Brompton Rd, London SW3 1HQ  
Mon–Fri 10–6, Sat by appt  
t 020 7584 7566  
ckg.ltd@virgin.net  
t @CraneKalmanLon  
[www.cranekalman.com](http://www.cranekalman.com)

**e LONG & RYLE**  
4 John Islip St, London SW1P 4PX  
Gallery reopens Aug 15.  
Tue–Fri 10–5.30, Sat 11–2  
t 020 7834 1434  
gallery@long-and-ryle.com  
t @longandryle f Long&RyleGallery  
[www.longandryle.com](http://www.longandryle.com)

**f OSBORNE STUDIO GALLERY**  
2 Motcomb Street, London SW1X 8JU  
**Group show** exhibiting a variety of subjects from London's bridges to wild Norfolk seascapes.  
Gallery closed Aug 28–Sep 4.  
Mon–Fri 10–6, Sat 11–5  
t 020 7235 9667  
gallery@osg.uk.com  
t @osborne-studio  
[www.osg.uk.com](http://www.osg.uk.com)

Peter Rasmussen  
'ochre violet blue red yellow green'  
Contemporary Perspectives On  
Printmaking at Mall Galleries  
(see listing on map 26)



**g PONTONE GALLERY**  
43 Cadogan Gardens, Chelsea  
London SW3 2TB  
**Jamil Naqsh.** Until Aug 27. \*ad  
Mon–Fri 10–6, Sat 11–7, Sun 11–6  
t 020 7730 8777  
art@pontonegallery.com  
t @PontoneGallery  
[www.pontonegallery.com](http://www.pontonegallery.com)

**h TATE BRITAIN**  
Millbank, London SW1P 4RG  
**Queer British Art 1861–1967.**  
Until Oct 1.  
Marking the 50th anniversary of the

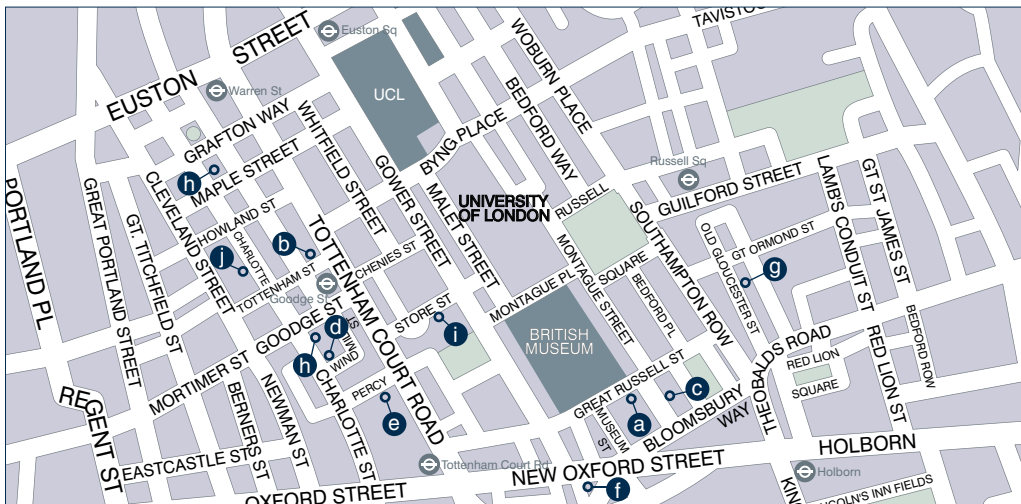
decriminalisation of male homosexuality in England.  
**Cerith Wyn Evans.** Until Aug 20.  
A major new light installation.  
daily 10–6  
t 020 7887 8888  
visiting.britain@tate.org.uk  
[www.tate.org.uk/visit/tate-britain](http://www.tate.org.uk/visit/tate-britain)

**i VICTORIA AND ALBERT MUSEUM**  
Cromwell Road, London SW7 2RL  
**The Pink Floyd Exhibition: Their Mortal Remains.** Until Oct 1.  
The first international retrospective of this iconic band.  
**Balenciaga: Shaping Fashion.**  
Until Feb 18.  
Cristóbal Balenciaga's exquisite craftsmanship and innovative designs which shaped modern fashion.  
daily 10–5.45, Fri 10–10  
free adm, charges apply for some exhibitions  
t 020 7942 2000  
t @V-and-A  
f victoriaandalbertmuseum  
[www.vam.ac.uk](http://www.vam.ac.uk)

Jack Knox  
'Late Night Read'  
Open Eye (see listing on map 3  
and editorial on page 6)



## MAP 22 LONDON BLOOMSBURY &amp; FITZROVIA



**a CONTEMPORARY CERAMICS CENTRE**  
63 Great Russell Street, London WC1B 3BF  
**Paola Paronetto:** Paper and Clay. Until Aug 5.  
**Martin Pearce, Paul Wearing and Rachel Wood:**  
Tangibles. Aug 10–Sep 2. Tangibles brings together the work of three ceramists whose vessels and objects immerse us and connect us to our instinctive desire to touch.  
Mon–Sat 10.30–6  
t 020 7242 9644  
info@cpaceramics.com  
t @ceramicscentre f ContemporaryCeramics  
www.cpaceramics.com

**b DÉBUT ART & THE CONINGSBY GALLERY**  
30 Tottenham Street, London W1T 4RJ  
**Alasdair Gray:** His Life in Pictures – the Exhibition. Until Aug 12.  
Virtuoso Paintings, Drawings and Prints, 1951–2017.  
Mon–Fri 9–6  
t 020 7636 7478  
info@coningsbygalleries.com  
t @ConingsbyG f The-Coningsby-Gallery  
www.debutart.com  
www.coningsbygalleries.com

**c ENITHARMON EDITIONS**  
10 Bury Place, Bloomsbury, WC1A 2JL  
Original works from Peter Blake, Michael Craig-Martin,

Jim Dine, Gilbert & George, David Hockney, Duane Michals, Victor Pasmore and Paula Rego.  
Artists' Books, Original Prints, Poetry, Literary Editions.  
see website for opening times  
t 020 7430 0844  
www.enitharmon.co.uk

**d THE FRAMERS GALLERY**  
36 Windmill Street, London W1T 2JT  
www.theframersgallery.co.uk

**e GALLERY DIFFERENT**  
14 Percy Street, Fitzrovia, London W1T 1DR  
London: The world's greatest capital city. Until Aug 28.  
Group exhibition featuring gallery and guest artists.  
Tue–Fri 10.30–6, Thu 10.30–8, Sat 11–5  
t 020 7637 3775  
info@gallerydifferent.co.uk  
t @G-Different  
f galleryDifferent  
www.gallerydifferent.co.uk

**f JOSEPH FINE ART**  
49 New Oxford Street, London WC1A 1BL  
Specialists in original works by **Andy Warhol, Bambi, Banksy, Damien Hirst, Jürgen Kuhl, Keith Haring, Robert Indiana, Roy Lichtenstein** and other collectable

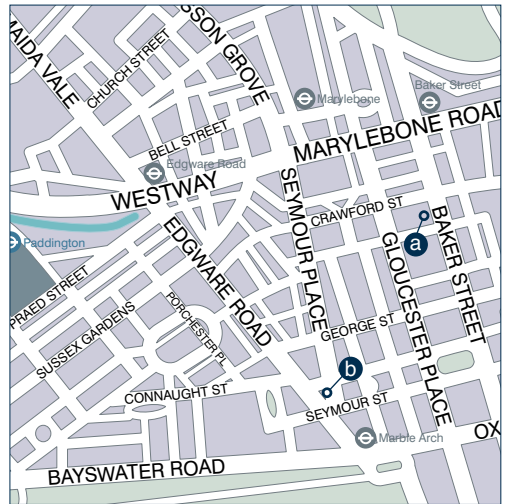


from left

Anna Somerville  
'Castle'  
&Gallery (see listing on map 3  
and editorial on page 6)

Caroline Dear  
'Reed Veil' 2017  
image courtesy the artist  
Dovecot Gallery (see listing on map 3  
and editorial on page 6)

## MAP 23 LONDON MARYLEBONE



artists. We offer an extensive and comprehensive selection of works by these artists and more at dealer prices. Our team will provide you with a knowledgeable and personalised service in a relaxed atmosphere.  
**Mon-Sat 10.30-6.30, Sun by appt**  
 t 020 7240 6799  
 info@josephfineart.co.uk  
 www.josephfineart.co.uk

**g OCTOBER GALLERY**

24 Old Gloucester Street, London WC1N 3AL  
 Gallery open by appt in Aug; reopens Sep 14 with a London premiere solo exhibition by **Alexis Peskine**.  
**Tue-Sat 12.30-5.30**  
 t 020 7242 7367  
 art@octobergallery.co.uk  
 t @octoberlondon  
 f octobergalleryholborn  
 www.octobergallery.co.uk

**h REBECCA HOSSACK ART GALLERY**

2a Conway Street, Fitzrovia, London W1T 6BA  
**Songlines XXIX. Aug 2-26.**  
 Celebrating 29 years of exhibiting indigenous Australian art, including paintings on bark, works on canvas and linocuts.  
 t 020 7436 4899  
**REBECCA HOSSACK ART GALLERY AT CHARLOTTE STREET**  
 28 Charlotte Street, London W1T 2NA  
**Songlines XXIX: Desert Country. Until Aug 12.**  
 Paintings from the central Australian desert revealing the landscape and ceremonial sites.  
**Seattle Art Fair. Aug 3-6.**  
 Mon-Sat 10-6  
 t 020 7255 2828  
 info@rebeccahossack.com  
 t @RebeccaHossack  
 www.rebeccahossack.com

**i STORE STREET GALLERY**

32 Store Street, London WC1E 7BS  
 www.storestreetgallery.com

**j WOOLFF GALLERY**

89 Charlotte Street, London W1T 4PU  
 Gallery closed in Aug.  
**Mon-Fri 10.30-6, Sat 11-5**  
 t 020 7631 0551  
 info@woolffgallery.co.uk  
 t @woolffgallery  
 f woolffgallery  
 www.woolffgallery.co.uk

**MARYLEBONE**

**a GRAHAM HUNTER GALLERY**

81 Baker Street, London W1U 6RQ  
**Graham A Hunter: Paintings. Aug 1-31.**  
 Modern Impressionism.  
**Mon-Fri 9.30-6, Sat 10-5, Sun 11-4**  
 t 020 7935 7794  
 info@grahamhuntergallery.co.uk  
 www.grahamhuntergallery.co.uk  
 Professional onsite framing service.  
 www.creativepictureframing.co.uk

**b THOMPSON'S GALLERY LONDON**

3 Seymour Place, London, W1H 5AZ  
 Showing a mixture of new work by some of our favourite

artists. **New sculpture courtyard** now open.  
**Mon-Fri 10-6, Sat 10.30-5.30**  
 t 020 7935 3595  
 enquiries@thompsonsgallery.co.uk  
 t @thompsonsgall  
 f ThompsonsGalleries  
 www.thompsonsgallery.co.uk

**IT'S ART CALL 2017**

Group Exhibition (Selected Artists)  
 18 - 26 August 2017

Solo Exhibition (Winner Artist)  
 1 - 9 September 2017

Presented by:  
 d contemporary  
 www.dcontemporary.com

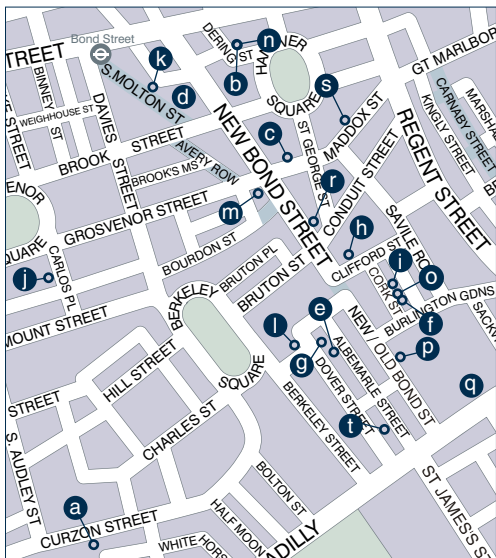
cult house  
 www.culthouse.com

WIN YOUR SOLO EXHIBITION  
 1-9 September

© Contemporary Gallery • 23 Grafton Street W1R 6JY London

CONTEMPORARY  
 www.dcontemporary.com  
 #IT'SARTCALL2017

## MAP 24 LONDON MAYFAIR

**a** 54 THE GALLERY

54 Shepherd Market, London W1J 7QX

**Mouss:** Nyonyose. Paintings. Aug 28–Sep 3. \*pr \*ad  
First UK exhibition for self-taught French-Burkinabè artist Mouss.

An intimate depiction of how the very essence of places and moments leave a trace in the soul.

Mon–Sat 10–7, Sun 10–3

t 07548 353314

mouss.arte@gmail.com

www.mouss-art.book.fr

www.54thegallery.co.uk

**b** ANNELY JUDA FINE ART

23 Dering Street, London W1S 1AW

**Sarah Oppenheimer:** S–011110. Sep 7–Oct 21.

Oppenheimer's second installation at the gallery interacts with the architecture and includes kinetic elements.

**Werner Haypeter:** Wall Crossing. Sep 7–Oct 21.

Haypeter's work unites the aesthetic of mass production with the geometric concerns and theories of Modernism.

Mon–Fri 10–6, Sat 11–5

t 020 7629 7578

ajfa@annelyjudafineart.co.uk

t @Annely-Juda

f AnnellyJudaFineArt

www.annelyjudafineart.co.uk

**c** BEAUX ARTS LONDON

48 Maddox Street, London W1S 1AY

**Summer:** Come Rain Come Shine. Until Sep 2.

Selected Modern British and new contemporary artists.

Mon–Sat 11–6

t 020 7493 1155

info@beauxartslondon.uk

www.beauxartslondon.uk

**d** BONHAMS

101 New Bond Street, London W1S 1SR

**Auctions and viewing held daily** of paintings,

watercolours and prints, English, European, Oriental ceramics, etc.

Free verbal valuations given.

Mon–Fri 8.30–5, Sun (viewing only) 2–5

t 020 7629 6602

**e** BROWN'S ART TOURS

Brown's Hotel, 33 Albemarle Street, London W1S 4BP

**Mayfair Art Tour.** On Sep 16. \*ad

Guided tour of galleries, curated walk, art themed lunch in HIX Mayfair. £65 per head, booking required.

Future dates include Oct 7, Nov 4.

t 020 7493 6020

reservations.browns@roccofortehotels.com

www.roccofortehotels.com/hotels-and-resorts/browns-hotel/events

**f** BROWSE & DARBY

19 Cork Street, London W1S 3LP

**Contemporary Gallery Artists.** Until Sep 28.

Mon–Fri 10–5.30, Sat 11–2

t 020 7734 7984

art@browseanddarby.co.uk

t @BrowseandDarby

www.browseanddarby.co.uk

**g** D CONTEMPORARY

23 Grafton Street, London W1S 4EY

**It's Art Call 2017:** Group exhibition of selected artists.

Aug 18–26. \*ad

**It's Art Call 2017:** Solo exhibition of winning artist.

Sep 1–9.

Mon–Sat 11–8

t 07425 089060

mara@dgroup.co.uk

t @dcontempart

f dcontemporary

www.dcontemporary.com

**h** ESKENAZI

10 Clifford Street, London W1S 2LJ

www.eskenazi.co.uk

**i** FLOWERS

21 Cork Street, London W1S 3LZ

**Freya Payne:** Returning. Until Sep 2.

An exhibition bringing together three connected series of paintings, sculptures and monoprints.

Mon–Sat 10–6

t 020 7439 7766

info@flowersgallery.com

t @flowersgallery

www.flowersgallery.com

**j** HAMILTONS GALLERY

13 Carlos Place, London W1K 2EU

**Murray Fredericks:** Salt – Vanity. Until Sep 6.

**Charles March:** Seascapes. Sep 11–15.

Tue–Fri 10–6, Sat 11–4

t 020 7499 9494

art@hamiltonsgallery.com

t @HamiltonsGall

f Hamiltons Gallery

www.hamiltonsgallery.com

**k** HANINA FINE ARTS

21 Woodstock Street, London W1C 2AP

**Venice Biennale Alumni.** Until Aug 19.

A selection of European artists that have participated in the biennale from 1920s to 1970s, such as André Lhote, Léopold Survage, Léon Gischia, Jean Deyrolle and Robert Berény, including actual works exhibited.

Mon–Fri 10–6, Sat 11–4

t 020 7243 8877

contact@haninafinearts.com

www.haninafinearts.com

**l** JEROME ZODO GALLERY

1 Hay Hill, London W1J 6AS

Closed for the holidays until the end of Aug.

Please visit the website or contact the gallery for more

information.  
 Mon-Sat 10-6  
 t 020 7629 8154  
 info@jerome-zodo.com  
 www.jerome-zodo.com

**i MAYOR GALLERY**  
 21 Cork Street, First Floor, London W1S 3LZ  
 Gallery closed until Sep 4.  
 Mon-Fri 10-5.30  
 t 020 7734 3558  
 info@mayorgallery.com  
 t @MayorGallery  
 www.mayorgallery.com

**m OPERA GALLERY LONDON**  
 134 New Bond Street, London W1S 2TF  
 Opera Gallery exhibits and sells masterpieces of **Modern Art** by the likes of Picasso, Miró, Buffet and Chagall; along with **Contemporary** established and upcoming artists such as Kusama, Yue Minjun, David Mach, Gérard Rancinan, Lita Cabellut and Joe Black. Monthly exhibitions of both Masters and Contemporary art throughout the year.  
 Mon-Sat 10-7, Sun 12-5  
 t 020 7491 2999  
 london@operagallery.com  
 www.operagallery.com

**n OSBORNE SAMUEL**  
 23 Dering Street, London W1S 1AW  
**Modern and Contemporary Art.**  
 Highlights include works by Lynn Chadwick, Elisabeth Frink, Barbara Hepworth, Ben Nicholson, Henry Moore and Keith Vaughan.  
 Mon-Fri 10-6  
 t 020 7493 7939  
 info@osbornesamuel.com  
 t @OsborneSamuel  
 www.osbornesamuel.com

**o REDFERN GALLERY**  
 20 Cork Street, London W1S 3HL  
 Mon-Fri 11-5.30, Sat 11-2  
 t 020 7734 1732  
 art@redfern-gallery.com  
 www.redfern-gallery.com

**p RICHARD NAGY**  
 22 Old Bond Street, London W1S 4PY  
**Classic Modernism, German Expressionism, Viennese Secession** including works by Egon Schiele and

**Gustav Klimt, and their contemporaries.**  
 by appt  
 t 020 7262 6400  
 info@richardnagy.com  
 www.richardnagy.com

**q ROYAL ACADEMY OF ARTS**  
 Burlington House, Piccadilly, London W1  
**Summer Exhibition 2017.** Until Aug 20.  
 In its 249th year, a unique exhibition providing a platform for emerging and established artists.  
 daily 10-6, Fri until 10  
 t 020 7300 8000  
 www.royalacademy.org.uk

**r SOTHEBY'S**  
 34-35 New Bond Street, London W1A 2AA  
**Auctions held daily.**  
 Islamic, Oriental and European works of art, paintings, drawings, watercolours, prints, books, manuscripts, furniture, silver, musical instruments, photographs, icons, tribal art.  
 Free advice and valuations given on the premises.  
 Mon-Fri 9-4.30  
 t 020 7293 5000

**s TRINITY HOUSE PAINTINGS**  
 50 Maddox Street, W1S 1AY  
 Trinity House is an international art dealership that is now in its tenth year, specialising in art from a variety of periods, from **19th Century painting to contemporary sculpture.**  
 Mon-Sat 10-6  
 t 020 7499 8958  
 art@trinityhousepaintings.com  
 www.trinityhousepaintings.com

**t WATERHOUSE & DODD**  
 47 Albemarle Street, London W1S 4JW  
**Group Show.** Through Aug.  
 Selection of Impressionist and Modernist artists including Wilhemina Barns-Graham, Rudolf Bauer, Alexander Calder, George Dannatt, André Masson, Jacques Villon and John Wells.  
 The gallery is open throughout the summer.  
 Mon-Fri 9.30-6, Sat 11-4  
 t 020 7734 7800 m 07786 740906  
 jamie@waterhousedodd.com  
 t @waterhousedodd  
 f waterhousedodd  
 www.waterhousedodd.com



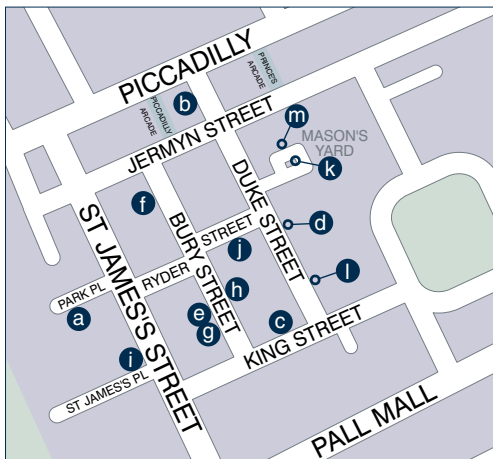
**JANE BRISTOWE**  
 @ PrintsGB.com



**NYONYOSE**  
 Paintings by  
**Mouss**  
 28 Aug - 3 Sep  
 2017  
 at  
**54 The Gallery**

Shepherd Market, Mayfair, London W1J 7QX  
 Mon-Sat 10-7, Sun 10-3 T 020 7491 7322

## MAP 25 LONDON ST JAMES'S

**(a) AKTIS GALLERY**

10-11 Park Place, London SW1A 1LP  
**Émigré art** in 20th century Paris.  
 Mon-Sat 10-2, 3-6  
 t 020 7629 6531  
 info@aktis-gallery.co.uk  
 www.aktis-gallery.co.uk

**(b) BERNARD JACOBSON GALLERY**

28 Duke Street, St James's, London SW1Y 6AG  
**Henri Matisse:** Painting, Sculpture, Drawing, Prints.  
 Until Sep 16.  
 Mon-Fri 10-6, Sat 11-2  
 t 020 7734 3431  
 mail@jacobsongallery.com  
 t @JacobsonGallery  
 f BernardJacobsonGallery  
 www.jacobsongallery.com

**(c) CHRISTIE'S**

8 King Street, St James's, London SW1Y 6QT  
 t 020 7839 9060

**(d) GALLERY 8**

8 Duke Street St James's, London SW1Y 6BN  
 www.8dukestreet.co.uk

**(e) GROSVENOR GALLERY**

35 Bury street, St James's, London SW1Y 6AY  
**Rasheed Areeen and Anthony Caro:** A Conversation.  
 Until Aug 11. With Introduction by Jon Wood.  
 Mon-Fri 10-6  
 t 020 7484 7979  
 art@grosvenorgallery.com  
 t @grosvenorart  
 f GrosvenorGallery  
 www.grosvenorgallery.com



Vanessa Bowman  
 'Black Pansies and  
 Fritillaries'  
 Panter & Hall  
 (listing on facing page)

**(f) ILLUSTRATIONCUPBOARD GALLERY**

22 Bury Street, St James's, London SW1Y 6AL  
 A unique art gallery representing the most distinguished  
**contemporary book illustrators** from around the world.  
 Mon-Fri 9.30-6, Sat 11-5  
 t 020 7976 1727  
 gallery@illustrationcupboard.com  
 www.illustrationcupboard.com

**(g) MARTYN GREGORY GALLERY**

34 Bury Street, St James's, London SW1Y 6AU  
**Early English Watercolours, British Paintings;**  
 also leading specialist in **China Trade Paintings** and  
 pictures relating to the Far East.  
 Mon-Fri 10-6  
 t 020 7839 3731  
 mgregory@dircon.co.uk  
 www.martyngregory.com

**(h) PAISNEL GALLERY**

9 Bury Street, St James's, London SW1Y 6AB  
**20th Century British Art, Post-War and St Ives.**  
 Mon-Fri 10-6, Sat & other times by appt  
 t 020 7930 9293  
 info@paisnelgallery.co.uk  
 www.paisnelgallery.co.uk

**(i) STERN PISSARRO GALLERY**

66 St James's Street, London SW1A 1NE  
 Specialising in works by **Camille Pissarro** and **three generations of his descendants** together with  
 Impressionist, post-impressionist and Modern Masters.  
 Mon-Fri 10-6, Sat 10-5  
 t 020 7629 6662  
 stern@pissarro.com  
 www.pissarro.net

**(j) STOPPENBACH & DELESTRE**

17 Ryder Street, St James's, London SW1Y 6PY  
 Specialists in **French 19th and early 20th century**  
 paintings and drawings. Works on view by Boudin,  
 Daubigny, Dufy, Loiseau and Pissarro amongst others.  
 We participate at TEFAF and Master Drawings.  
 Mon-Fri 10-5.30, Sat by appt  
 t 020 7930 9304  
 contact@artfrancais.com  
 www.artfrancais.com

**(k) WHITE CUBE**

25-26 Mason's Yard, St James's, London SW1Y 6BU  
 t 020 7930 5373  
 www.whitecube.com

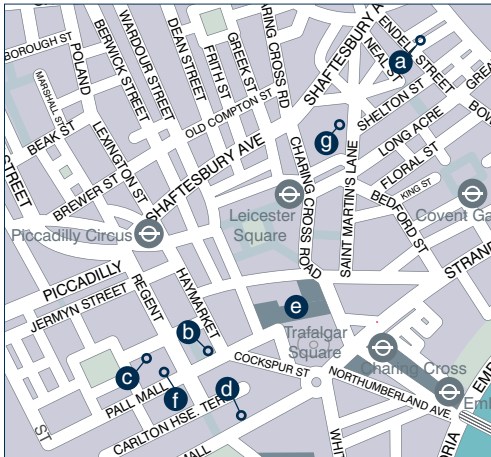
**(l) WHITFORD FINE ART**

6 Duke Street, St James's, London SW1Y 6BN  
**Twentieth Century British and European** Paintings and  
 Sculpture with an emphasis on Post War Abstraction and  
 Pop Art.  
 Mon-Fri 10-6  
 t 020 7930 9332  
 info@whitfordfineart.com  
 www.whitfordfineart.com

**(m) ZULEIKA GALLERY**

3rd Floor, 6 Mason's Yard, St James's, London  
 SW1Y 6BU  
**Sam Wadsworth:** Still Life Paintings. Until Aug 12.  
 A wonderful opportunity to see this private body of work by  
 the esteemed portrait artist.  
 Tue-Fri 11-6, Sat 11-4, Mon by appt  
 t 020 3903 6393  
 info@zuleikagallery.com  
 t @zuleikagallery  
 f zuleikagallery  
 www.zuleikagallery.com

## MAP 26 LONDON TRAFALGAR SQ



### **e THE NATIONAL GALLERY**

Trafalgar Square, London WC2N 5DN

**Chris Ofili:** Weaving Magic. Until Aug 28.

Ofili unveils a new tapestry, handwoven by Dovecot Tapestry Studio.

**Take One Picture.** Until Sep 24.

See the innovative ways in which school children have responded to Rubens' vibrant 'Roman Triumph'.

daily 10–6, Fri until 9

t 0800 912 6958

information@ng-london.org.uk

t @NationalGallery

f TheNationalGallery

www.thenationalgallery.org.uk

### **f PANTER & HALL**

11–12 Pall Mall, London SW1Y 5LU

**Martin Llewellyn:** Land and Sea. Until Aug 4.

**Vanessa Bowman:** Moments in Time. New still lifes.

Aug 1–11.

Mon–Fri 10–6, Sat by appt

t 020 7399 9999

enquiries@panterandhall.com

www.panterandhall.com

### **g WEST STREET GALLERY**

8 West Street, Seven Dials, Covent Garden, London

WC2H 9NG

**Regular Exhibitions:** contemporary oil and watercolour paintings, sculpture, and ceramics. Sarah Burgess, Gerald Bate, Rosemary Eversfield, John Joseph, Kat Joseph, Paul Harber.

Mon–Fri 11–6

t 07714 535435

art@west-streetgallery.co.uk

www.west-streetgallery.co.uk

### **a HOSPITAL CLUB**

24 Endell Street, London WC2H 9HQ

**I Am Here:** Portable Art, Wearable Objects Jewellery Since the 1970s. Until Aug 28.

This Crafts Council free public exhibition features works of innovative studio jewellery created by the most significant British and international makers of the last five decades.

daily 11–6

t 020 7170 9100

reception@thehospitalclub.com

www.thehospitalclub.com

### **b LA GALLERIA PALL MALL**

5b Pall Mall, 30 Royal Opera Arcade, London SW1Y 4UJ

www.lagalleria.org

### **c MACDOUGALL'S RUSSIAN ART GALLERY**

30A Charles II Street, London SW1Y 4AE

**Russian Art:** Selling Exhibition.

MacDougall's Russian Art Auction House has now opened a Russian Art Gallery, which promises to become a leading Russian culture centre in London.

Mon–Fri 10–5

t 020 7389 8160

russian@macdougallauction.com

www.macdougallauction.com

### **d MALL GALLERIES**

The Mall (nr Trafalgar Square), London SW1

**Contemporary Perspectives on Printmaking.** Until Aug 11.

**Hesketh Hubbard Art Society:** Annual Exhibition. Aug 1–5.

Figure studies and life drawing.

**Call for Entries – Columbia Threadneedle Prize.**

Aug 1–Sep 22.

Seeking representational painting, drawing, printmaking

and sculpture. First Prize £20,000 and a solo show.

Deadline Sep 22, 12 noon.

**Educational August Workshops.** Aug 7–25.

One and two day workshops in painting and drawing,

10.30–4.30.

daily 10–5, clo Aug 3 at 12.30

t 020 7930 6844

info@mallgalleries.com

t @mallgalleries f mallgalleries

www.mallgalleries.org.uk

**Tribal Art London.** Sep 6–9. \*ad

The only tribal art fair of its kind in the UK, showcasing 23 exhibitors displaying fine tribal art from around the world, chosen for its quality and authenticity.

see website for times t 07939 166148

www.tribalartlondon.com

## BROWN'S Mayfair Art Tour 16 SEPTEMBER 2017



www.roccoforthotels.com/hotels-and-resorts/browns-hotel/events

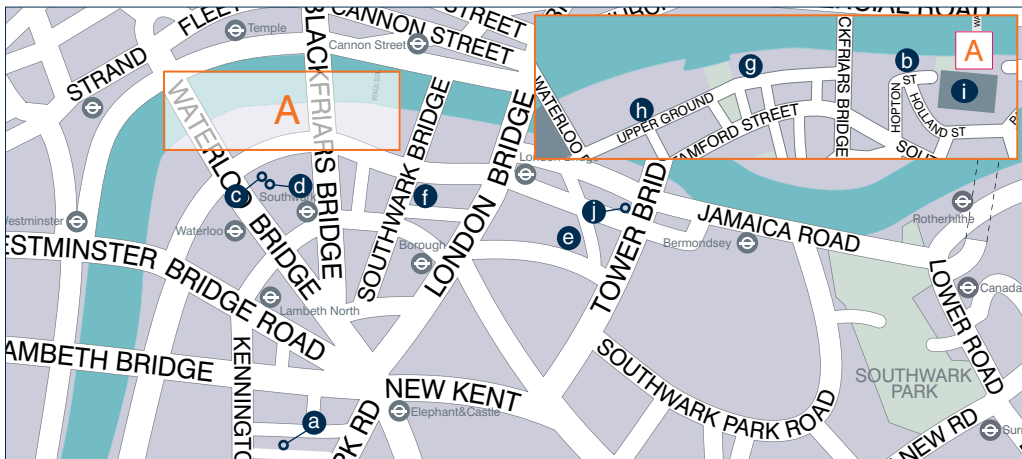
Brown's Hotel hosts the next exclusive Mayfair Art Tour on Saturday 16 September, introducing guests to four Mayfair exhibitions.

The tour, which costs just £65 to attend, includes: coffee/tea in The Library at Brown's Hotel on arrival (10.30 – 11am), tour of four galleries in the surrounding Mayfair and lunch in HIX Mayfair.

Guests can also take advantage of 'Mayfair Art Lovers Weekend' including one night at Brown's Hotel, breakfast, Mayfair Art Tour and lunch for two. Rates from £530.

Forthcoming Art Tour dates include: 7 October and 4 November. Numbers are limited to eight guests per art tour so advance booking is recommended. To book a place call Reservations on 020 7518 4172.

## MAP 27 LONDON BANKSIDE &amp; SOUTHWARK



**a** **ADVANCED GRAPHICS LONDON**  
68 Walcot Square, London SE11 4TZ  
Please see our website for events at the Walcot Square office and the archive in Peckham.  
t 020 7407 2055  
office@advancedgraphics.co.uk  
f Advanced.London  
www.advancedgraphics.co.uk

**b** **BANKSIDE GALLERY**  
48 Hopton Street, London SE1 9JH  
www.banksidegallery.com

**c** **THE CELLO FACTORY**  
33-34 Cornwall Road, London SE1 8TJ  
www.thecellofactory.com

**d** **LLEWELLYN ALEXANDER GALLERY**  
124-126 The Cut, Waterloo, London SE1 8LN  
opposite The Old Vic Theatre  
**NOT The Royal Academy 2017: A Salon des Refuses.**  
Until Aug 19.  
Celebrating its 27th year. Paintings submitted to the Royal Academy Summer Exhibition but not hung.  
**The Society of Feline Artists:** Annual London Exhibition. Aug 24-Sep 15.  
Now in its 22nd year. Over 200 paintings of cats in various styles and mediums.  
Tue-Sat 10-7.30  
t 020 7620 1322/24  
gallery@LlewellynAlexander.com  
www.LlewellynAlexander.com  
www.amillionbrushstrokes.co.uk

**e** **LONDON GLASSBLOWING STUDIO AND GALLERY**  
62-66 Bermondsey Street, London SE1 3UD  
**Peter Layton:** Reminiscence. Aug 11-Sep 3.  
Peter Layton muses on choice moments of his 40 year career in glass, revisiting ideas and spaces that inspired his work, presented alongside his provocative sculptural pieces.  
Mon-Sat 10-6  
t 020 7403 2800  
gallery@londonglassblowing.co.uk  
t @LDNGlassblowing  
f LDNGlass  
www.londonglassblowing.co.uk

**f** **MENIER GALLERY**  
51 Southwark Street, London SE1 1RU  
**Call for Artists - United Society of Artists.** Aug 1-25. \*ad  
Artists working in all media are invited to enter up to six

works, submission fee £12 per work. Online submission deadline Aug 25. Full details on UA website.  
**United Society of Artists:** 94th Open Exhibition. Sep 5-9.  
daily 11-6  
mail@meniergallery.co.uk  
www.the-ua.org.uk  
www.meniergallery.co.uk

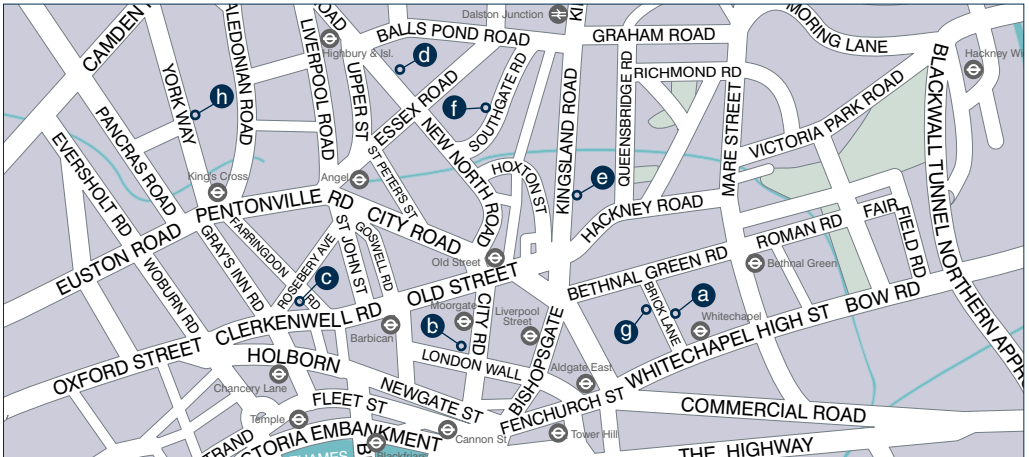
**g** **SKYLARK GALLERIES - Artist-Run**  
1.09 Oxo Tower Wharf, London SE1 9PH  
first floor riverside  
Two friendly galleries on London's South Bank present an exciting range of contemporary **paintings, prints, ceramics, sculpture and photography.**  
Tue-Sun 11-6, free admn t 020 7401 9666  
5 Gabriel's Wharf, SE1 9PP  
daily winter 12-5, summer 11-6 t 020 7928 4005  
info@skylarkgalleries.com  
www.skylarkgalleries.com

**h** **SOUTHBANK PRINTMAKERS**  
Gabriel's Wharf, 56 Upper Ground, London SE1 9PP  
near the Oxo Tower  
Artist-run Gallery; **contemporary printmakers** showing a wide variety of images and techniques. All work is original and limited edition. Examples of etching, lithography, silkscreen, linocuts, woodcuts and engraving.  
Mon-Fri 11.30-5, Sat/Sun 10-7  
t 020 7928 8184  
www.southbankprintmakers.com

**i** **TATE MODERN**  
Bankside, London SE1 9TG  
**Soul of a Nation: Art in the Age of Black Power.** Until Oct 22.  
What it meant to be a Black artist in the USA during the Civil Rights movement.  
**Alberto Giacometti.** Until Sep 10.  
UK's first major retrospective of Alberto Giacometti for 20 years.  
**Fahrelnissa Zeid.** Until Oct 8.  
First UK retrospective of Fahrelnissa Zeid 1901-1991.  
Sun-Thu 10-6, Fri/Sat 10-10  
t 020 7887 8888  
visiting.modern@tate.org.uk  
www.tate.org.uk/modern

**j** **WHITE CUBE**  
144-152 Bermondsey Street, London SE1 3TQ  
www.whitecube.com

## MAP 28 LONDON CITY, KING'S CROSS, ISLINGTON & EAST END



### **a** 5TH BASE GALLERY

23 Heneage Street, Shoreditch, London E1 5LJ  
**Alicia France:** *Suits*. Aug 4–14.  
 The first solo exhibition of Newcastle-based artist Alicia France.  
 A recent graduate from Newcastle university, her work delves into the naked portrait.  
 PV Aug 3, 6–9.  
*daily 12–8*  
*t 07738 949714*  
*diana@5thbase.co.uk*  
**www.5thbase.co.uk**

### **b** BARBICAN ART GALLERY

Barbican Centre, Silk Street, London EC2Y 8DS  
**Trajal Harrell:** *Hoochie Koochie*. Until Aug 13.  
 A performance exhibition.  
*see website for opening times*  
*t 0845 1207550*  
*artinfo@barbican.org.uk*  
*t @BarbicanCentre*  
**f** BarbicanCentre  
**www.barbican.org.uk/artgallery**

### **c** THE EAGLE GALLERY/EMH ARTS

159 Farringdon Road, London EC1R 3AL  
 Gallery closed in Aug.  
*Wed–Fri 11–6, Sat 11–4 & by appt*  
*t 020 7833 2674*  
*emmahilleagle@aol.com*  
**www.emmahilleagle.com**

### **d** ESTORICK COLLECTION OF MODERN ITALIAN ART

39a Canonbury Square, London N1 2AN  
**Franco Grignani:** *Art as Design 1950–1990*.  
 Until Sep 10.  
 Best known for his swirling 'Woolmark' logo, Franco Grignani (1908–1999) was an influential artist and graphic designer whose dazzling works anticipated Op Art.  
*Wed–Sat 11–6, Sun 12–5*  
*t 020 7704 9522*  
*t @Estorick*  
**f** estorickcollection  
**www.estorickcollection.com**

### **e** FLOWERS

82 Kingsland Road, London E2 8DP  
**Mono:** An exhibition of unique prints. Until Sep 9.  
 A group exhibition of monoprints and monotypes by

over 30 artists.  
 See also Cork Street map  
*Tue–Sat 10–6*  
*t 020 7920 7777*  
*info@flowersgallery.com*  
*t @flowersgallery*  
**www.flowersgallery.com**

### **f** THE MILLINERY WORKS

85/87 Southgate Road, London N1 3JS  
**Botanic:** Summer Exhibition of Nature in Contemporary Art. Until Sep 10.  
 Closely hung, floor to ceiling exhibition of 200 contemporary paintings and images of flora, flowers, fruit and trees by 21 artists, inspired by The Marianne North Gallery at Kew Gardens. Includes Patrick Hughes, David Inshaw, Eric Rimmington, Frank Stanton.  
*Tue–Sat 11–6, Sun 12–5, free admn*  
*t 020 7359 2019*  
*art@millineryworks.co.uk*  
*t @MillineryWorks*  
**f** MillineryWorks  
**www.millineryworks.co.uk**

### **g** NEW ARTIST FAIR

The Old Truman Brewery, Off Ely's Yard, London E1 6QR  
**New Artist Fair:** Summer Exhibition. Sep 8–10. \*ad  
 New Artist Fair returns to The Old Truman Brewery for the 7th year.  
 The event has more than 100 emerging and recently established contemporary artists to buy affordable art directly from. PV Sep 8, 6–9.  
*Sat/Sun 12–6, free admn*  
*Oliver@newartistfair.com*  
*t @NewArtistFair*  
**f** NewArtistFairPage  
**www.newartistfair.com**

### **h** PANGOLIN LONDON

Kings Place, 90 York Way, London N1 9AG  
**Sculptural Ceramics and Stone.** Until Aug 25.  
 A mixed exhibition showcasing new and exceptional works in ceramic and stone.  
*Mon–Sat 10–6*  
*t 020 7520 1480*  
*gallery@pangolinlondon.com*  
*t @pangolinlondon*  
**f** pangolinlondon  
**www.pangolinlondon.com**

## SECTION 29 ART SERVICES & ART COURSES

### ART MATERIALS

#### GREEN & STONE of CHELSEA

259 Kings Road, London SW3 5EL  
Suppliers of quality fine art materials – specialists in Easels of all kinds. \*ad  
t 020 7352 0837  
[www.greenandstone.com](http://www.greenandstone.com)

#### RUSSELL & CHAPPLÉ

30–31 Store Street, London WC1E 7QE  
Canvas and stretcher-bar specialist, supplying a wide range of professional artists' materials.  
t 020 7836 7521  
info@randc.net  
[www.randc.net](http://www.randc.net)

### ART MEDIA

#### artsmediacontacts

The media database for the arts, 2017. \*ad  
[www.artsinform.co.uk](http://www.artsinform.co.uk)

### AUCTION ROOMS

#### BONHAMS

101 New Bond Street, London W1  
Montpelier Street, London SW7  
Also Leeds, Glasgow, Edinburgh, Bristol, Oxford, Bayswater. See Index.  
t 020 7629 6602

#### CHRISTIE'S

8 King Street, London SW1  
Also South Kensington, Edinburgh. See Index.  
t 020 7839 9060

#### SOTHEBY'S

34/35 New Bond Street, London W1  
Also Chester, Edinburgh. See Index.  
t 020 7293 5000

### INSURANCE

#### PHILLIPPA LEVY & ASSOCIATES

19 Louisa Street, London E1 4NF  
Insurance Brokers.  
Tailor made specialist packages for Artists, Galleries, Dealers and Private Collectors.  
t 020 7790 1963  
leavyp177@aol.com  
phillippa@phillippalevy.com  
f PhillippaLevyAssociates  
[www.phillippalevy.com](http://www.phillippalevy.com)

### PACKING, SHIPPING, STORAGE

#### 3 LANES TRANSPORT

Higher Bussow Farm, Towednack, St Ives, Cornwall TR26 3BB  
Experienced Fine Art transporters.  
Weekly delivery service South West to London. Rest of UK by arrangement. Single items to entire exhibitions. Fully insured.  
t 01736 799298 or 07970 948324  
info@3lanes.com  
[www.3lanes.com](http://www.3lanes.com)

#### ABRAHAMS (since 1865)

1 Crown Close, Bow, London E3 2JH  
Cases/Crates, Display Plinths, Travel Frames. Museum and commercial-gallery standards.  
Barry Kempton/Marc Ben-Nathan.  
t 020 8980 1937  
info@abrahamscases.co.uk  
[www.abrahamscases.co.uk](http://www.abrahamscases.co.uk)

#### MOVING EXPERIENCE

Office 28, Unit 1, 1000 North Circular Road, London NW2 7JP  
Long standing family business providing a personalised quotation, packing, storage and removal service. Specialists in art and antiques transportation and installation.  
t 020 8438 6727  
roberto@movexp.co.uk  
[www.movexp.co.uk](http://www.movexp.co.uk)

### PICTURE FRAMERS

#### ARTEFACT PICTURE FRAMERS

36 Windmill Street, London W1T 2JT  
Bespoke framing, conservation, restoration. See also Galleries For Hire.  
t 020 7580 4878  
info@artefactlondon.co.uk  
[www.artefactlondon.co.uk](http://www.artefactlondon.co.uk)

#### PENDRAGON FINE ART FRAMES

1–3 Yorkton Street, Shoreditch, London E2 8NH  
Specialists in hand-finished conservation frames and gilding. Full museum standard. Free consultation and parking. Collection & Delivery Service.  
t 020 7729 0608  
sales@pendragonframes.com  
[www.pendragonframes.com](http://www.pendragonframes.com)

#### STORE STREET FRAMING

30–31 Store Street, London WC1E 7QE  
Central London framer, specialising in contemporary profiles and hand-finished frames.  
t 020 7636 8241  
info@storestreetframing.co.uk  
[www.storestreetframing.co.uk](http://www.storestreetframing.co.uk)

### PICTURE HANGING

#### LION Picture Framing Supplies

148 Garrison Street, Birmingham B9 4BN  
Everything for professional picture framing. An extensive range of mouldings, innovative hanging and display systems, safe and secure frame fixings. Visit our website to browse our range and request catalogues.  
t 0121 773 1230.  
nicola@lionpic.co.uk  
[www.lionpic.co.uk](http://www.lionpic.co.uk)

### PORTRAITURE

#### JONATHAN ELLIS

South Hampstead, London  
Artist, tutor and portrait painter. Please visit website for prices and further contact details.  
t 07980 713819  
[www.Jonathanelisart.org](http://www.Jonathanelisart.org)

### PRINTMAKING WORKSHOPS

#### ARTICHOKE PRINT WORKSHOP

Unit S1 Bizspace, 245a Coldharbour Lane, London SW9 8RR  
Fine Art Printmaking – etching, lithography & relief.  
Open access, courses and printmaking for schools.  
Editioning services.  
t 020 7924 0600  
artichoketrading@btconnect.com  
[www.artichokeprintmaking.com](http://www.artichokeprintmaking.com)

### WEB DESIGN

#### ART EXPOSURE

Website design for artists. \*ad  
m 07960 129185  
jack@artexposure.co.uk  
[www.artexposure.co.uk](http://www.artexposure.co.uk)



**GREEN & STONE**  
of Chelsea  
*Suppliers of quality fine art materials*

**Specialists in Easels**  
Studio, Sketching, Display  
& Table Easels  
in Oak, Beech & Mahogany

259 Kings Road London SW3 5EL  
Tel: 020 7352 0837  
[www.greenandstone.com](http://www.greenandstone.com)

Website Design for Artists  
from £295

**artexposure**



07960 129185  
[artexposure.co.uk](http://artexposure.co.uk)  
[jack@artexposure.co.uk](mailto:jack@artexposure.co.uk)

**ARTSmediacontacts**  
2016 Directory



The media database for the arts  
Arts PR Tools

[www.artsmediacontacts.co.uk](http://www.artsmediacontacts.co.uk)  
[@artsmediaalerts](https://twitter.com/artsmediaalerts)

## Making the most of your gallery SPACE

If you're hiring out all or part of your gallery the best place to advertise is in the dedicated section of **Galleries** magazine.

'Galleries for Hire' has been popular and effective for many years in reaching artists, curators and exhibition organisers through its intensive, targeted distribution and large national circulation.

### ADVERTISING RATES

See [www.galleries.co.uk](http://www.galleries.co.uk)  
or CONTACT Rosemary on  
[ads@galleries.co.uk](mailto:ads@galleries.co.uk)  
or 020 8237 1180  
**now booking**

Published by  
Barrington Publications  
Riverside Studios  
Aspenlea Road, London W6 8LH



**GALLERIES** magazine  
every month in print and online

## SECTION 30 FOR HIRE &amp; SALE

## LONDON

**54 THE GALLERY**

Shepherd Market, London W1J 7QX  
Charming gallery in pedestrianised street.  
t 01747 828384 / 020 7491 7322

**BANKSIDE GALLERY**

48 Hopton Street, London SE1 9JH  
Refurbished, high-profile gallery beside Tate Modern.  
1500 sq ft, very competitive rates.  
t 020 7928 7521  
info@banksidegallery.com  
[www.banksidegallery.com](http://www.banksidegallery.com)

**BERMONDSEY GALLERY**

29 Dockhead, London SE1 2BS  
Highly affordable hire rates and located behind Shad Thames.  
Also offering a professional framing service.  
t 020 7231 3141  
info@bermondseygallery.co.uk  
[www.bermondseygallery.co.uk](http://www.bermondseygallery.co.uk)

**M P BIRLA MILLENNIUM ART GALLERY**

The Bhavan, 4a Castletown Road, West Kensington, London W14 9HE  
Contemporary 140 sq m gallery. Excellent location.  
Reasonable rates. No commission.  
t 020 7381 3086/4608  
curator@bhavan.net  
[www.bhavan.net/hire-a-facility/mp-birla-art-gallery](http://www.bhavan.net/hire-a-facility/mp-birla-art-gallery)  
[www.bhavan.net](http://www.bhavan.net)

**BONES & PEARL STUDIOS**

60-68 Markfield Road, London N15 4QA  
A spacious art gallery within lively art studios. 2000 sq ft of space available.  
info@bonesandpearl.com  
[www.gallerybonesandpearl.co.uk](http://www.gallerybonesandpearl.co.uk)

**THE CONINGSBY GALLERY**

30 Tottenham Street, London W1T 4RJ  
Really exceptional space in an excellent West End location.  
16 years experience in specialized gallery hire.  
t 020 7636 7478  
info@coningsbygallery.com  
[www.coningsbygallery.com](http://www.coningsbygallery.com)

**THE FRAMERS GALLERY**

Gallery for hire in central London (Fitzrovia).  
Ideal for solo, group and pop-up shows.  
Unique space, great location, affordable rates, staffed, no commission, professional framing services. \*ad  
t 020 7580 4878 020 7580 0987  
info@artefactlondon.co.uk  
[www.theframersgallery.co.uk](http://www.theframersgallery.co.uk)

**GALLERY 8**

8 Duke Street, St James's, London SW1Y 6BN  
Splendidly maintained gallery in prime location.  
Helpful, experienced management and full facility support.  
t 020 7930 0375 m 07973 292958  
gallery@8dukestreet.co.uk  
[www.8dukestreet.co.uk](http://www.8dukestreet.co.uk)

**GRAHAM HUNTER GALLERY**

Marylebone, central high street location. Affordable rates, staffed, no commission, professional framing service.  
t 020 7935 7794  
info@grahamhuntergallery.co.uk  
[www.grahamhuntergallery.co.uk](http://www.grahamhuntergallery.co.uk)

**LA GALLERIA PALL MALL**

5b Pall Mall, Royal Opera Arcade, London SW1Y 4UY  
Two contemporary galleries, minutes from Trafalgar Square, hireable separately or together. Exhibition support available. \*ad  
t 020 7930 8069  
enquiries@lagalleria.org  
[www.lagalleria.org](http://www.lagalleria.org)

**LANDMARK ARTS CENTRE**

Ferry Road, Teddington, Middx  
Housed in the magnificent surroundings of our Grade II listed building, the Landmark Gallery in Teddington is now available for hire for solo or group fine art exhibitions.  
Please contact Ben Kidger for details.  
t 07989 570831  
ben@landmarkartscentre.org  
[www.landmarkartscentre.org](http://www.landmarkartscentre.org)

**MALL GALLERIES**

The Mall (nr Trafalgar Square), London SW1  
Contemporary exhibition galleries available to hire, in a landmark London location. Choice of three galleries to hire independently or collectively. \*ad  
t 020 7968 0953  
events@mallgalleries.com  
[www.mallgalleries.org.uk](http://www.mallgalleries.org.uk)

**MENIER GALLERY**

Menier Chocolate Factory, 51 Southwark Street, London SE1 1RU  
Two exceptional gallery spaces: 3,000/1,500 sq ft.  
Hireable separately or together. Minutes from Tate Modern. Highly competitive rates for exhibitions and events. \*ad  
Student and charity discounts available.  
t 020 7407 3222  
mail@meniergallery.co.uk  
[www.meniergallery.co.uk](http://www.meniergallery.co.uk)

**PIERS FEETHAM GALLERY**

475 Fulham Road, London SW6 1HL  
Light spacious gallery; 600 sq ft plus outdoor sculpture space. Reasonable rates.  
t 020 7381 3031  
piersfeethamgallery@hotmail.com



**GALLERY FOR HIRE**

Unique & Friendly Exhibition Space  
36 Windmill Street  
Fitzrovia  
London W1T 2JT  
0207 580 4878

**The Framers Gallery**  
[www.theframersgallery.co.uk](http://www.theframersgallery.co.uk)

London's most prestigious  
**GALLERIES FOR HIRE**



**La Galleria Pall Mall** is situated next to Trafalgar Square and The National Gallery with 165m<sup>2</sup> of gallery space on ground floor, height 4m, 18m display windows and movable panels.

**ROA Gallery**-100m<sup>2</sup> divided on two floors, 3m window onto Pall Mall. Both galleries are fully equipped, we have a large mailing list and give support to all our exhibitions. The outdoor covered Arcade space is perfect for the evening preview parties.

• **Royal Opera Arcade Galleries** •

5b Pall Mall  
London SW1Y 4UY  
Tel: +44 (0)20 79308069  
enquiries@lagalleria.org - www.lagalleria.org



# MENIERGALLERY

**Two floors of exceptional gallery space available for hire together or separately**

Minutes from Tate Modern, Borough Market and The Shard - No commission - 3,000/1,500 sq ft  
Free Website Listing - Mailing List Promotion  
Competitive Rates - Student subsidies

mail@meniergallery.co.uk / 0207 407 3222  
51 Southwark Street, London, SE1 1RU  
www.meniergallery.co.uk

## Exhibition and Fair Hire

Contemporary exhibition galleries available to hire, in a landmark London location

- Choice of three galleries; hire independently or collectively
- No commission charges on art sales
- Exhibition support and technical advisory
- Bespoke lighting
- Evening Private View
- Listings
- PA system and WiFi

Mall Galleries, The Mall,  
London SW1

Contact us for further information:  
020 7968 0953 or  
events@mallgalleries.com  
www.mallgalleries.org.uk

MALL GALLERIES

Installation shot of The Columbia Threadneedle Prize 2016 exhibition, The Curated Space

## ARTIST WEBSITES

👉 Denotes: New/Re Entry, Site Refreshing/Change of Address

👉 See feature below

These pages are reproduced on [www.galleries.co.uk/artlinx](http://www.galleries.co.uk/artlinx)

## ARTISTS ONLINE

**Alan Stark:** marine & landscape art  
[www.alanstark.com](http://www.alanstark.com)

**Anastasia Russa:** contemporary icons in play with mythologies  
[www.anastasiarussa.com](http://www.anastasiarussa.com)

**Anne Lynch:** contemporary figurative paintings and prints  
[www.annelynch.com](http://www.annelynch.com)

**Antonino Trimarchi:** neo-surrealist paintings  
[www.antoninotrimarchi.com](http://www.antoninotrimarchi.com)

**Becca Clegg:** vibrant abstracts, semi-abstracts & landscapes  
[www.becart.co.uk](http://www.becart.co.uk)

**Caroline Juler:** writer, painter, sculptor  
[www.mamalliga.co.uk](http://www.mamalliga.co.uk)

**Danny Holmes-Adams:** British landscape & night paintings  
[www.holmes-adams.co.uk](http://www.holmes-adams.co.uk)

**Diana Mackie:** Scottish Highland landscapes, oil on canvas  
[www.diana-mackie.co.uk](http://www.diana-mackie.co.uk)

**Dimitrios Tsouris:** expressionist paintings - theme of 'presence'  
[www.dimitriostsouris.com](http://www.dimitriostsouris.com)

**Emiko Aida**  
[www.aidastudios.com](http://www.aidastudios.com)

**F.magnus-Hirshfield:** sixty years in bronze and silver  
[www.avignonfineart.com](http://www.avignonfineart.com)

**Frances Broomfield:** paints small, detailed, idiosyncratic work  
[www.francesbroomfield.co.uk](http://www.francesbroomfield.co.uk)

**Frances Knight:** plein air landscape paintings  
[www.francesknight.com](http://www.francesknight.com)

**Francis Murphy:** portraits  
[www.francismurphyart.co.uk](http://www.francismurphyart.co.uk)

**Heather Gulliver:** bright light oils of Africa with earlier abstracts  
[www.hgulliver.com](http://www.hgulliver.com)

**Janet Tod:** vibrant colourful still life  
[www.janettod.co.uk](http://www.janettod.co.uk)

**Jean Perrett:** loose and lively impresionistic paintings  
[www.jeanperrettartist.co.uk](http://www.jeanperrettartist.co.uk)

**John Barnicoat 1924-2013:** 20th century British art  
[www.johnbarnicoat.co.uk](http://www.johnbarnicoat.co.uk)

👉 **Jo Tuck:** portraits  
[www.jotuck.com](http://www.jotuck.com)

**Jo Whitney:** atmospheric paintings in oil, Venice, Cornwall, Nice  
[www.jo-whitney.co.uk](http://www.jo-whitney.co.uk)

**Joan Doerr:** paintings inspired by elemental impact on environment  
[www.joandoerr.com](http://www.joandoerr.com)

**Julian Anniss:** paintings, oils, landscape & still life  
[www.juliananniss.com](http://www.juliananniss.com)

**Laurence Broderick:** sculpture  
[www.laurencebroderick.co.uk](http://www.laurencebroderick.co.uk)

**Lee Campbell:** atmospheric oil paintings, landscape & metaphysical  
[www.leecampbell.co.uk](http://www.leecampbell.co.uk)

**Marjana Wjasnova:** symbolic, abstract, spiritual artist  
[www.wjasnova.com](http://www.wjasnova.com)

**Michael Alford:** figurative, landscapes, cityscapes, portrait commissions  
[www.michaelalford.co.uk](http://www.michaelalford.co.uk)

**Natalia Avdeeva:** views of London, oil paintings & prints  
[www.nataliaavdeeva.co.uk](http://www.nataliaavdeeva.co.uk)

**Nicholas Robertson:** contemporary robust figurative paintings  
[www.artdesign.org.uk](http://www.artdesign.org.uk)

**Nick Andrew:** contemporary landscape painting  
[www.nickandrew.co.uk](http://www.nickandrew.co.uk)

**Nigel O'Neill:** geometric paintings  
[www.nigeloneill-abstract-art.com](http://www.nigeloneill-abstract-art.com)

**Pat Castle:** oils & mixed media on paper  
[www.patcastle.co.uk](http://www.patcastle.co.uk)

**Paul Smith:** sculptures - bold, semi abstract, figurative  
[www.paulsmithsculptures.co.uk](http://www.paulsmithsculptures.co.uk)

**Rachel Fenner:** landscapes - trad. of British Romantic Abstraction  
[www.rachelfenner.co.uk](http://www.rachelfenner.co.uk)

**Ray Wilkinson:** land and seascapes  
[www.raywilkinson.com](http://www.raywilkinson.com)

**Richard Wallace:** properly painted pictures and pleasing prints  
[www.richardwallace.org](http://www.richardwallace.org)

**Rosemary Clunie:** a quest for the dream at the heart of life  
[www.rosemaryclunie.com](http://www.rosemaryclunie.com)

**Rosie Packer:** abstract paintings of the sea, city and nature  
[www.rosiepacker.co.uk](http://www.rosiepacker.co.uk)

**Shirley Morris:** paintings in oil, etchings in colour/monochrome  
[www.artshirleymorris.com](http://www.artshirleymorris.com)

**Simon Bergin**  
[www.artsb.co.uk](http://www.artsb.co.uk)

**Sonja Benskin Mesher RCA, UA:** multi media  
[www.sonja-benskin-mesher.com](http://www.sonja-benskin-mesher.com)

**Sue Terrey:** predominantly landscapes - felt, pastel, mixed media  
[www.SueTerrey.co.uk](http://www.SueTerrey.co.uk)

**Tom Henderson Smith:** Paintings - Cornwall, landscape, seascape  
[www.hendersonsmith.co.uk](http://www.hendersonsmith.co.uk)

👉 **Ulla Ploughmand:** MY Cosmos! Fantasy female forms - dreamscapes  
[www.ulla-art.com](http://www.ulla-art.com)

**William Teather:** contemporary portraits using traditional skills  
[www.britishtportraitartist.com](http://www.britishtportraitartist.com)



Jo Tuck 'New York Moment'

## ARTlinked in listed above and at [galleries.co.uk/artlinx](http://galleries.co.uk/artlinx)

Plein air sketching combined with studio work is the method, landscapes and figurative work with vibrant coloured shapes and flat planes are the result. A somewhat nomadic lifestyle must also be a major part of Jo Tuck's artistic persona - born in a small town in Australia, a stint studying art in the UK, time working as a film editor for the BBC as well as in feature films, all the while painting, finally giving life to her

art full time, while travelling for a decade or more - Mexico to Paris, Australia to New York and much in between. Collectors of her pictures have clustered in the UK, the US, Canada and Australia. The latter is also home to a permanent collection - in Airlie Beach - where a percentage of her sales are donated to Himalayan Health and Hearing, as well as the Wildlife Fund.

# NATIONAL ARTIST INDEX

Galleries listed here usually stock works by those artists under whose name they appear. Where a gallery is in **bold and marked with an asterisk** it claims a principal agency in works in one or more media by that artist

<b>ADLER</b> Jankele Ben Uri	<b>DAVIE</b> Alan Paisnel Gallery	<b>HICKS</b> Nicola Flowers	<b>MIRO</b> Joan Osborne Samuel	<b>RUSSELL-FLINT</b> Alex Catto Gallery
<b>ANDREWES</b> Eliza Highgate Contemporary *	<b>DIX</b> Otto Richard Nagy	<b>HOWSON</b> Peter Flowers	<b>MITCHELL</b> Denis Paisnel Gallery	<b>RYDER</b> Sophie Osborne Samuel
<b>ANDREWS</b> Sybil Osborne Samuel	<b>EASTON</b> Arthur Highgate Contemporary *	<b>HUGHES</b> Patrick Flowers	<b>MOORE</b> Henry Osborne Samuel	<b>SCHIELE</b> Egon Richard Nagy
<b>BALMER</b> Derek Catto Gallery	<b>EMSLEY</b> Paul Redfern *	<b>HUGHES-STANTON</b> Blair North House	<b>MORTIMER</b> James Catto Gallery	<b>SCHIERENBERG</b> Tai-Shan Flowers
<b>BAMBI</b> Joseph Fine Art	<b>EPSTEIN</b> Sir Jacob Ben Uri	<b>INGAMELLS</b> Andrew Highgate Contemporary *	<b>MOUNT</b> Paul Paisnel Gallery	<b>SELBY</b> William John Davies
<b>BANK</b> Sandra Highgate Contemporary *	<b>EUSTACE</b> David Highgate Contemporary *	<b>JACKSON</b> Kurt Jackson Foundation	<b>MURPHY</b> Sandy John Davies	<b>SOLOMON</b> Joseph Ben Uri
<b>BANKS</b> Joseph Fine Art	<b>FEILER</b> Paul Osborne Samuel Paisnel Gallery Redfern *	<b>JACKSON</b> Philip Catto Gallery	<b>NEWCOMB</b> Mary Crane Kalman *	<b>SOLOMON</b> Simeon Ben Uri
<b>BARKER</b> Clive Whitford Fine Art *	<b>FRANKLIN</b> Jenny Crane Kalman	<b>JONES</b> Nicholas Crane Kalman	<b>NEWCOMB</b> Tessa Crane Kalman	<b>SORRELL</b> Richard Llewellyn Alexander
<b>BENDALL</b> Mildred Whitford Fine Art *	<b>FROST</b> Terry Paisnel Gallery	<b>JAY</b> Pamela Llewellyn Alexander	<b>NICHOLSON</b> Ben Crane Kalman	<b>SUTHERLAND</b> Graham Crane Kalman
<b>BERTRAND</b> Alain Catto Gallery	<b>GEAR</b> William Whitford Fine Art	<b>KINGSLEY</b> John John Davies	<b>NICHOLSON</b> Winifred Crane Kalman	<b>TING</b> Walasse Catto Gallery
<b>BLACKADDER</b> Elizabeth Browse & Darby	<b>GEAS</b> Luce Highgate Contemporary *	<b>KIRCHNER</b> Ernst Ludwig Richard Nagy	<b>PAOLOZZI</b> Eduardo Flowers	<b>TOUBEIX</b> Arnold Highgate Contemporary *
<b>BLOCH</b> Martin Ben Uri	<b>GERTLER</b> Mark Ben Uri	<b>KLIMT</b> Gustav Richard Nagy	<b>PISSARRO</b> Lucien Ben Uri	<b>TUNNARD</b> John Paisnel Gallery
<b>BOMBERG</b> David Ben Uri	<b>GORE</b> Frederick Highgate Contemporary *	<b>KRAMER</b> Jacob Ben Uri	<b>PLUMB</b> John Paisnel Gallery	<b>UGLOW</b> Euan Browse & Darby
<b>BRADLEY</b> Martin Paisnel Gallery	<b>GOWING</b> Sir Lawrence Highgate Contemporary *	<b>KUBIN</b> Alfred Richard Nagy	<b>POWER</b> Cyril Edward Osborne Samuel	<b>WARHOL</b> Andy Joseph Fine Art
<b>CAZIEL</b> Whitford Fine Art *	<b>GRAHAM</b> Peter Llewellyn Alexander	<b>LOWNDES</b> Alan Crane Kalman	<b>PRENTICE</b> David John Davies	<b>WARREN</b> Bob Highgate Contemporary *
<b>CHADWICK</b> Lynn Osborne Samuel	<b>GROSZ</b> George Richard Nagy	<b>LOWRY</b> LS Crane Kalman	<b>PROCKTOR</b> Patrick Redfern *	<b>WILSON</b> Douglas Highgate Contemporary *
<b>CHEPIK</b> Sergei Catto Gallery	<b>GUAITAMACCHI</b> Bruno Highgate Contemporary *	<b>MCCARTNEY</b> Clive Catto Gallery	<b>QUIRKE</b> Michael Highgate Contemporary *	<b>WILSON</b> Frank Avray Paisnel Gallery Whitford Fine Art
<b>CHINNERY</b> George Martyn Gregory	<b>HARRISON</b> Claude Highgate Contemporary *	<b>MCWHIRTER</b> Ishbel Highgate Contemporary *	<b>RICHARDSON</b> Philip Highgate Contemporary *	<b>WOLMARK</b> Alfred Aaron Ben Uri
<b>CLOUGH</b> Prunella Osborne Samuel	<b>HENRY</b> Sean Osborne Samuel	<b>MEIDNER</b> Ludwig Ben Uri	<b>ROBBINS</b> Richard Highgate Contemporary *	<b>WRIGHT</b> Lisa Beardsmore Gallery
<b>COOK</b> Beryl Portal	<b>HEPBURN</b> Alan Highgate Contemporary *	<b>MENINSKY</b> Bernard Ben Uri	<b>ROBINSON</b> Paul Highgate Contemporary *	<b>YARDLEY</b> John Llewellyn Alexander
<b>COOKE</b> Edward W. Martyn Gregory				

**GALLERIES:** August 2017 – 17,000 copies. Available from listed galleries, sale rooms, major hotels and by **subscription:** UK £28, Europe £56.40, Elsewhere £69 (UK Art Trade price of £24, please send business card) [www.galleries.co.uk/subs](http://www.galleries.co.uk/subs) payments to 'Galleries' Mastercard/Visa accepted. **Listing & advertising:** [www.galleries.co.uk/rates](http://www.galleries.co.uk/rates)



## NATIONAL SPECIALISATION INDEX

To find a particular artist, use the artists' index on p.43, for a particular gallery see the dealer index on p.46

### ABORIGINAL ART

Rebecca Hossack  
October Gallery: *also African*  
Whitford Fine Art

### ABSTRACT

Paisnel Gallery  
October Gallery: *also Aboriginal*  
Whitford Fine Art  
**contemporary**  
The Brownston Gallery: *abstract expressionism*  
Flowers  
Thompson's Gallery

### AFRICAN ART

October Gallery: *also Aboriginal*  
Rebecca Hossack  
**contemporary**  
Contemporary F.A. Gallery (Eton):  
*finest Shona sculpture*

### ANCIENT CHINESE & ORIENTAL

Eskenazi

### ARCHITECTURAL

Architectural Heritage: *20th C. & contemporary also period architectural elements, period garden statuary, fine reproduction garden ornaments, bespoke stone fireplaces*  
Gallery 19: *British & Continental*

### ART BRUT/OUTSIDER ART

Gagliardi

### ART NOUVEAU & DECO

Talisman Fine Art  
Victor Arwas Gallery: *fine decorative art, nouveau & deco*

### ART FAIRS/EVENTS/FESTIVALS

New Artist Fair  
Mall Galleries: *Tribal Art London*  
Pittenweem Arts Festival

### ASIAN

October Gallery: *also African*

### AUCTIONEERS

Bonhams; Christie's; Lots Road;  
MacDougall's; Sotheby's

### AUSTRALIAN ART

Rebecca Hossack

### BOTANICAL & WILDLIFE

Flowers

### BRITISH & EUROPEAN

Compton Verney: *diverse*  
John Green Fine Art  
Stern Pissarro: *works by Camille Pissarro & 3 generations of his descendants plus impressionist, post-impressionist & modern masters*  
Whitford Fine Art: *modernist contemporary*  
Candida Stevens Fine Art  
Catto Gallery  
Thompson's Gallery

### BOOKS

Head of Zeus Books: *The Magic Lamp by Ben Okri (poetry) & Rosemary Clunie (illustration)*

### CERAMICS & POTTERY

Stour Gallery  
**contemporary**  
Beaux Arts  
Contemporary Ceramics

### CHINESE ART

**contemporary**  
Rebecca Hossack

### CLASSIC MODERNISM

Richard Nagy

### CONTEMPORARY

12 Star Gallery: *European*  
54 The Gallery: *Mouss*  
5th Base Gallery: *Alicia France & Gallery: works on paper in oils, prints and glass*  
Advanced Graphics London  
Artichoke: *painting, sculpture & ceramics*  
The Art Room  
Artwave West  
Arusha Gallery  
Barbican Art Gallery  
Bath Contemporary  
Bayswater Artists: *original art displayed by artists*  
Belgravia Gallery  
Bernard Jacobson Gallery: *British & American art, also modern*  
Buxton Museum & Art Gallery  
Cadogan Contemporary  
Cameron Contemporary Art: *British painting, ceramics and sculpture*  
Campden Gallery  
The Chapel Arts: *contemporary*  
Royal Academicians  
Circle Contemporary  
Contemporary Fine Art (Eton): *major Scottish, also African art*  
Cricknet Fine Art  
Cynthia Corbett Gallery  
D Contemporary  
David Simon Contemporary  
Début Art & The Coningsby Gallery  
Dorset County Museum  
Dovecot Gallery  
Drawn to the Valley: *artists of the Tamar Valley*  
Eagle Gallery  
Enitharmon Editions  
Ffin y Parc Gallery  
Fidra Fine Art: *Scottish*  
Flowers  
Fountain Gallery: *mixed shows*  
Fruitmarket Gallery  
The Gallery at 41: *Dorset artists*  
Gallery Different: *British/International*  
The Gallery at Hastings Arts Forum  
Gallery Fifi: *Ginette Fiandaca eclectic collection of mixed media*  
Gallery 10

Gallery 286  
Goldmark Gallery: *& 20th C.*  
Greenall O'Dell Studio  
Hamiltons Gallery  
Highgate Contemporary: *British & European*  
Highgate Gallery  
The Infinite Gallery: *Rosemary Clunie*  
Jerome Zodo Gallery: *& post-war*  
Joseph Fine Art: *& 20th C.*  
Kooywood Gallery  
Landmark Arts Centre  
Lane House Arts  
Leamington Spa Art Gallery/Museum  
Lemon Street Gallery  
Lime Tree Gallery: *fine art glass*  
Linden Hall Studio: *sculpture, glass, printmaking, paintings, drawings*  
Mall Galleries: *Tribal Art London*  
Mayor Gallery  
Menier Gallery: *United Society of Artists*  
Millyard Gallery  
Modern Artists Gallery  
MoMA Machynlleth  
Montcrieff-Bray Gallery: *paintings & sculpture*  
Number 1 Harrogate  
October Gallery: *also African & Aboriginal*  
Old Chapel Gallery: *British art & crafts*  
Open Eye Gallery  
Osborne Studio Gallery  
Padstow Studio  
Palm Tree Gallery  
Pangolin London  
Panter & Hall  
Penwith Gallery  
Piers Feetham: *paintings, ceramics, sculpture*  
Pontone Gallery: *figurative*  
Portal Painters: *figurative*  
PrintsGB.com: *prints*  
PS45 Gallery: *Dan Davidson*  
Rebecca Hossack  
Rowley Gallery: *watercolours*  
Royal Albert Memorial Mus/Art Gall  
Royal Glasgow Institute  
The Russell Gallery: *figurative*  
The Scottish Gallery  
Scottish National Gallery Modern Art  
Skylark Galleries  
Sladers Yard  
St Ives Society of Artists  
Store Street: *British & European*  
Stour Gallery: *European glass & jewellery*  
Sutton Gallery  
Tanya Baxter Contemporary  
Thackeray Gallery  
Thelma Hulbert Gallery  
Thompson's Contemporary  
Town Mill Galleries  
Tregony Gallery: *emerging & established artists*  
Twenty Twenty: *art & applied arts*  
TZB Southbourne Gallery  
Ucheldre Centre

Waterhouse & Dodd  
Water Street Gallery  
West Street Gallery  
Whitford Fine Art: *British Modernism, British/Continental*  
Whitley Art Gallery  
Will's Art Warehouse  
Woodbine Contemporary: *paintings drawings, prints & sculpture*

### CORNISH

**contemporary**  
Circle Contemporary  
Jackson Foundation: *Kurt Jackson*  
Kestle Barton  
The New Gallery Portscatho  
Penwith Gallery: *Cornwall artists – abstract & figurative*  
Thompson's Gallery  
Yew Tree Gallery

### CRAFTS

**contemporary**  
Birch Tree Gallery: *& prints*  
Open Eye Gallery

### DRAWINGS

**contemporary**  
The London Sketch Club  
Piers Feetham: *paintings, ceramics, sculpture*

### EASTERN EUROPEAN

**contemporary**  
Posk Gallery

### EMERGING ARTISTS

**contemporary**  
Annelly Juda: *& Russian constructivism, exhibitions, ceramics & fine art*  
Cadogan Contemporary: *English landscape & post impressionism*

### FIGURATIVE

**contemporary**  
Flowers  
Llewellyn Alexander: *monthly shows*  
Piers Feetham: *paintings, ceramics & sculpture*  
Portal Painters  
Thompson's Gallery

### FOLK ART

Rebecca Hossack

### FRENCH

Hanina Fine Arts: *School of Paris plus early modern & post-impressionist paintings & sculpture*  
Stoppenbach & Delestre: *19th & early 20th C.*  
Whitford Fine Art: *modernism & abstract, French, modern British, impressionist, British & Continental*

### GERMAN EXPRESSIONISM

Richard Nagy

**GLASS  
contemporary**

London Glassblowing Studio/Gallery

**IDIOSYNCRATIC  
contemporary**Portal Painters: *painting*  
Redwing Gallery**ILLUSTRATION**Illustration Art Gallery  
Illustrationcupboard Gallery**IMPRESSIONIST**Hanina Fine Arts: *Post-Impressionist*  
Stern Pissarro: *works by Camille Pissarro & 3 generations of his descendants plus impressionist, post-impressionist & modern masters*  
Trinity House Paintings: *& modern paintings & sculpture***INDIAN  
contemporary**Grosvenor Gallery: *& Modern British sculpture, South African Art*  
Rebecca Hossack**ITALIAN**

Estorick Collection

**JEWELLERY**Hospital Club: *Crafts Council free public show features innovative studio jewellery***MARINE**

Mall Galleries

**MINIATURES**Llewellyn Alexander: *20th C.***MODERN BRITISH**Abbot Hall Art Gallery: *18th, 19th C. also contemporary*  
Anthony Hepworth: *& post-war Beaux Arts: & contemporary*  
Belgrave St Ives: *20th C. paintings & prints*  
Brownsword Hepworth: *also contemporary*  
Cambridge Book & Print Gallery: *fine drawings, original prints, ceramics*  
Catto Gallery  
Crane Kalman: *& contemporary*  
Flowers: *& contemporary*  
Gallery Pangolin: *sculpture & related drawings*  
The Millinery Works  
Osborne Samuel  
Paisnel Gallery  
Pallant House GalleryPanter & Hall: *20th C./contemporary*  
Redfern Gallery  
Samuel Robson Fine Art: *paintings & sculptures*  
Sandra Blow RA Studio  
Stanley Spencer Gallery  
Thompson's Gallery  
Wenlock: *20th & 21st C.*  
Whitford Fine Art  
Willer**MODERN WELSH ART**  
MoMA Machynlleth**MUSEUMS**Ben Uri Museum & Gallery  
Buxton Museum & Art Gallery  
Dorset County Museum  
Leighton House Museum  
Royal Albert Memorial Mus/Art Gall  
Victoria and Albert Museum**OLD MASTERS/MASTERS**The National Gallery: *13th to 20th C.***OPEN STUDIOS & ART TRAILS**Arran Open Studios  
Diana Mackie Studio & Gallery  
Drawn to the Valley: *artists of the Tamar Valley*  
Pittenweem Arts Festival**ORIENTALISM/ORIENTALIST**Martyn Gregory: *China Trade***PAINTINGS  
contemporary**Flowers  
Ingo Fincke Gallery: *new & established artists*  
Lilford Gallery: *paintings & sculpture*  
Nick Cudworth Gallery: *& prints*  
Piers Feetham: *paintings, ceramics, sculpture***PHOTOGRAPHY**Barbican  
Hamiltons  
**contemporary**  
Flowers**POLISH**Ben Uri Museum & Gallery  
**contemporary**  
Posk Gallery**PORTRAITURE**Mall Galleries  
Scottish National Portrait Gallery  
Thompson's Gallery**POST IMPRESSIONIST**  
Whitford Fine Art: *French***PRIMITIVE**

Rebecca Hossack

**PRINTS**Advanced Graphics London  
Flowers  
Gallery Nine: *& jewellery, textiles*  
Goldmark Gallery  
Southbank Printmakers  
**contemporary**  
Cupola Contemporary Art  
Greenwich Printmakers Gallery: *affordable original artists' prints*  
PrintsGB.com: *promoting artists working in print***PUBLIC GALLERIES**Barbican Art Gallery  
Fruitmarket Gallery  
Leamington Spa Art Gallery  
Leighton House Museum  
National Gallery  
Pallant House  
Royal Academy of Arts  
Scottish National Gallery  
Scottish National Gallery of Modern Art  
Serpentine Gallery  
Stanley Spencer Gallery  
Tate Britain  
Tate Modern  
Tate St Ives  
Thelma Hulbert Gallery  
12 Star Gallery  
Victoria and Albert Museum**REALISM  
contemporary**  
Thompson's Gallery**RUSSIAN**Aktis Gallery: *& 20th C. French émigré art*  
MacDougall's Auction House**SCOTTISH**Scottish National Gallery: *including Scottish & international art from the early Renaissance to the 20th C.*  
Scottish National Gallery of Modern Art  
Scottish National Portrait Gallery  
The Scottish Gallery: *20th C. & contemporary Scottish painting*  
**contemporary**  
Contemporary Fine Art (Eton): *major Scottish, also African art*  
Compass Gallery/Cyril Gerber Fine Art: *Scottish & international*  
Fidra Fine ArtLaurel Gallery: *art, crafts & gifts*  
The Lost Gallery  
Roger Billcliffe  
Thompson's Gallery**SCULPTURE**Gallery Pangolin: *bronze sculpture & sculptors' drawings*  
Paisnel Gallery: *20th C. British Art Post-War & St Ives*  
Tom Merrifield Gallery: *also paintings & prints*  
**contemporary**  
35 North Contemporary Fine Art  
Chappel Galleries: *Mark Goldsworthy sculpture & paintings*  
Contemporary Fine Art (Eton): *largest selection of Shona in the UK*  
Flowers  
Thompson's Gallery**ST IVES**Paisnel Gallery: *20th C. British Art Post-War & St Ives*  
Zuleika: *St Ives past & present***SURREALISM**

Mayor Gallery

**SYMBOLIST**

Talisman Fine Art

**TRIBAL ARTS**

Rebecca Hossack

**TWENTIETH CENTURY**Opera Gallery London  
Sylvester Fine Art: *& contemporary***VIENNESE SECESSION**

Richard Nagy

**WATERCOLOURS**Llewellyn Alexander: *20th C.*  
Martyn Gregory: *early English & China Trade paintings***WELSH**Albany: *& British*  
**contemporary**  
The Art Shop & Chapel  
Cardiff Art Contemporary  
Harbour Lights Gallery  
King Street Gallery  
Martin Tinney Gallery: *leading Welsh artists*  
Oriol Môn  
Oriel Plas Glyn-y-Weddw  
Tegfryn Gallery: *leading Welsh artists***WILDLIFE  
contemporary**

Mall Galleries

## INDEX DEALERS &amp; SERVICES

Numbers refer to maps and sections; 'p' refers to a page number

**&Gallery** 077 1128 5545 3  
**12 Star Gallery** 020 7973 1992 21  
**3 Lanes Transport** 079 7094 8324 29  
**35 North Contemporary** 077 9205 8039 15  
**54 The Gallery** 020 7491 7322 24,30  
**5th Base Gallery** 077 3894 9714 28

**Abbot Hall Art Gallery** 01539 722464 4  
**Abrahams** 020 8980 1937 29  
**Advanced Graphics London** 020 7407 2055 27  
**Aktis Gallery** 020 7629 6531 25  
**Albany Gallery** 02920 487158 5  
**Annelly Juda** 020 7629 7578 24  
**Anthony Hepworth** 01225 310694 13  
**Architectural Heritage** 01386 584414 8  
**Arran Open Studios** 01770 820373 1  
**Art Exposure** 079 6012 9185 29  
**Art Shop** 01873 852690 6  
**Artefact Picture Framers** 020 7580 4878 29  
**Artichoke** 15  
**Artichoke Print Workshop** 020 7924 0600 29  
**artsmediacontacts.co.uk** 29  
**Artwave West** 01297 489746 11  
**Arusha** 0131 557 1412 3  
**Atkinson Gallery** 01458 444322 11

**Bankside Gallery** 020 7928 7521 27,30  
**Barbican Art Gallery** 0845 120 7550 28  
**Bath Contemporary** 01225 461230 13  
**Bayswater Artists** 077 5338 7050 19  
**Beaux Arts (Bath)** 01225 464850 13  
**Beaux Arts (London)** 020 7493 1155 24  
**Belgrave St Ives** 01736 794888 10  
**Belgravia Gallery** 15  
**Ben Uri** 020 7604 3991 18  
**Bermondsey Gallery** 020 7231 3141 30  
**Bernard Jacobson** 020 7734 3431 25  
**Birch Tree Gallery** 0131 556 4000 3  
**Bohun Gallery** 01491 576228 14  
**Bones & Pearl** 30  
**Bonhams** 020 7393 3900 4,8,13,29  
**Brown's Art Tours** 020 7493 6020 24  
**Brownston Gallery** 01548 831338 11  
**Brownsword Hepworth** 020 3887 0687 21  
**Browse & Darby** 020 7734 7984 24  
**Buxton Mus. & Art Gallery** 01629 533540 4

**Cadogan Contemporary** 020 7581 5451 21  
**Cambridge Book & Print** 01223 694264 16  
**Cameron Contemporary** 01273 727234 15  
**Campten Gallery** 01386 841555 8  
**Candida Stevens Fine Art** 01243 528 401 15  
**Catto Gallery** 020 7435 6660 18  
**Chalice Gallery** 077 9060 4809 18  
**Chappel Galleries** 01206 240326 16  
**Christie's** 020 7839 9060 3,20,25,29  
**Christie's S. Kensington** 020 3469 6085 20  
**Circle Contemporary** 01208 816899 9  
**Compton Verney** 01926 645500 7  
**Coningsby Gallery** 020 7636 7478 30

**Contemp. Ceramics Ctre** 020 7242 9644 22  
**Contemp. F.A. Gallery Eton** 01753 854315 14  
**Crane Kalman** 020 7584 7566/581 1529 21  
**Crickett Fine Art** 020 7352 2733 20  
**Cupola Contemporary Art** 0114 285 2665 4  
**Cynthia Corbett Gallery** 020 8947 6782 17  
**Cyril Gerber Fine Art** 0141 221 3095 2

**D Contemporary** 24  
**David Simon Contemporary** 01225 460189 13  
**Début Art/Coningsby** 020 7636 1064 22  
**Diana Mackie Studio** 01470 511795 1  
**Dorset County Museum** 01305 756827 11  
**Dorvecot Gallery** 0131 550 3660 3  
**Drawn To The Valley** 11

**Eagle Gallery/EMH Arts** 020 7833 2674 28  
**Enitharmon Editions** 020 7430 0844 22  
**Eskenazi** 020 7493 5464 24  
**Estorick Collection** 020 7704 9522 28

**Ffin Y Parc** 01494 642070 6  
**Fidra Fine Art** 01620 895057 1  
**Flowers (Cork Street)** 020 7439 7766 24  
**Flowers (Kingsland Rd)** 020 7920 7777 28  
**Fountain Gallery** 020 8941 5865 17  
**Framers Gallery** 020 7580 4878 22,30  
**Fruitmarket Gallery** 0131 225 2383 3

**Gagliardi Gallery** 020 7352 3663 20  
**Gallery 19** 020 7937 7222 19  
**Gallery 286** 020 7370 2239 20  
**Gallery 8** 020 7930 0375 25,30  
**Gallery at 41** 01929 480095 11  
**Gallery Different** 020 7637 3775 22  
**Gallery Fifi** 20  
**Gallery Nine** 01225 319197 13  
**Gallery Pangolin** 01453 889765 8  
**Gallery Ten** 3  
**Goldmark** 01572 821424 16  
**Graham Hunter** 020 7935 7794 22,30  
**Green & Stone of Chelsea** 020 7352 0837 29  
**Greennall O'Dell Studio** 01851 810170 1  
**Greenwich Printmakers** 020 8858 1569 17  
**Grosvenor Gallery** 020 7484 7979 25  
**Guildford House Gallery** 01483 444751 15

**Hamiltons Gallery** 020 7499 9494 24  
**Hanina Fine Arts** 020 7243 8877 24  
**Harbour Lights Gallery** 01348 831549 6  
**Henry Miller Fine Art** 07769 700290 p17  
**Head of Zeus** p17  
**Highgate Contemporary** 020 8340 7564 18  
**Highgate Gallery** 020 8340 3343 18  
**Hospital Club** 020 7170 9100 26

**Illustration Art Gallery** 020 8768 0022 p17  
**Illustrationcupboard Gallery** 020 7976 1727 25  
**Ingo Fincke Gallery** 020 7228 7966 17

**Jackson Foundation** 01736 787 638 9  
**Jerome Zodo Gallery** 020 7629 8154 24  
**John Davies Gallery** 01608 652255 8  
**John Green Fine Art** 0141 333 1991 2  
**Jonathan Ellis Portraits** 079 8071 3819 29  
**Joseph Fine Art** 020 7240 6799 22

**Kestle Barton** 01326 231811 9  
**King Street Gallery** 01267 220121 6  
**Kooywood Gallery** 029 2023 5093 5

**La Galleria Pall Mall** 020 7930 0069 26,30  
**Landmark Arts Centre** 079 8957 8081 17,30  
**Lane House Arts** 077 6749 8403 13  
**Laurel Gallery** 0131 226 5022 3  
**Leamington Spa Art Gall** 01926 742700 7  
**Leighton House Museum** 020 7602 3316 19  
**Lemon Street Gallery** 01872 275757 9  
**Lilford Gallery** 01227 639086 15  
**Lime Tree Bristol** 0117 929 2527 12  
**Lime Tree Long Melford** 01787 319046 16  
**Linden Hall Studio** 01304 360 411 15  
**Lion Framing Supplies** 0121 6786607 29  
**Llewellyn Alexander** 020 7620 1322 27  
**London Glassblowing** 020 7403 2800 27  
**Long & Ryle** 020 7834 1434 21  
**Lost Gallery** 019756 51287 1  
**Lots Road Auctions** 020 7376 6800 20

**MacDougall's Russian Art** 020 7389 8160 26  
**Mall Galleries** 020 7930 6844 26,30  
**Martin Tinney Gallery** 029 2064 1411 5  
**Martyn Gregory** 020 7839 3731 25  
**Mayor Gallery** 020 7734 3558 24  
**Menier Gallery** 020 7407 3222 27,30  
**Millinery Works** 020 7359 2019 28  
**Millyard Gallery** 01457 870410 4  
**Minster Gallery** 01962 877601 15  
**Modern Artists Gallery** 01189 845893 14  
**MoMA Machynlleth** 01654 703355 6  
**Moving Experience** 020 7483 2501 29  
**MP Birla Millennium AG** 020 7381 3086 30

**National Gallery** 0800 912 6958 26  
**New Artists Fair** 28  
**Nick Cudworth Gallery** 01225 445221 13  
**North House Gallery** 01206 392717 16  
**Number 1 Harrogate** 07932 621261 4

**October Gallery** 020 7242 7367 22  
**Old Chapel Gallery** 01544 388842 7  
**Open Eye Gallery** 0131 557 1020 3  
**Opera Gallery London** 020 7491 2999 24  
**Oriel Mon** 01248 7244444 6  
**Oriel Plas Glyn-Y-Weddw** 01758 740763 6  
**Osborne Samuel** 020 7493 7939 24  
**Osborne Studio** 020 7235 9667 21

**Padstow Studio** 01841 533777 9  
**Paisnel Gallery** 020 7930 9293 25  
**Pallant House Gallery** 01243 774557 15  
**Palm Tree** 020 8964 8153 19  
**Pangolin London** 020 7520 1480 28  
**Panter & Hall** 020 7399 9999 26  
**Pendragon Fine Art Frames** 020 7729 0608 29  
**Penwith Gallery** 01736 795579 10  
**Phillippa Levy & Assocs** 020 7790 1963 29  
**Piers Feetham** 020 7381 3031 20,30

Pittenweem Arts Festival 01333 313109 1  
 Pontone Gallery 020 7730 8777 21  
 Portal Painters 078 0166 8237 17  
 Posk Gallery 020 8741 1940 17  
 PrintsGB.com p17  
 PS45 Gallery 11

**R E Buchell FA Frames** 0117 9297747 12  
 Rebecca Hossack Art 020 7436 4899 22  
 Redfern Gallery 020 7734 1732 24  
 Redwing Gallery 01736 711458 9  
 Resipole Studios 01967 431506 1  
 Richard Nagy 020 7262 6400 24  
 Roger Billcliffe 0141 332 4027 2  
 Rowley Gallery 020 7727 6495 19  
 Royal Academy 020 7439 7438 24  
 Royal Albert Museum/Gallery 01392 265858 11  
 Royal College of Art 19  
 Royal Glasgow Institute 01412 486386 2  
 Russell & Chapple 020 7836 7521 29  
 Russell Gallery 020 8780 5228 17

**Samuel Robson FA** 078 9408 6836 p17  
 Sandra Blow Studio 01736 797371 10  
 Scottish Nat. Gal. Mod. Art 0131 624 6332 3  
 Scottish Nat. Portrait Gallery 0131 624 6200 3  
 Scottish National Gallery 0131 556 8921 3  
 Serpentine Gallery 020 7402 6075 19  
 Skylark Galleries 020 7401 9666 27  
 Sladers Yard 01308 459511 11  
 Sotheby's 020 7293 5000 24,29  
 Southbank Printmakers 020 7928 8184 27  
 St Ives Society of Artists 01736 795582 10  
 Stanley Spencer Gallery 01628 471885 14  
 Stern Pissarro Gallery 020 7629 6662 25  
 Stoppenbach & Delestre 020 7930 9304 25  
 Store Street Framing 020 7636 8241 29  
 Store Street Gallery 020 7580 2118 22  
 Stour Gallery 01608 664411 8  
 Sutton Gallery 07854 972930 3  
 Sylvester Fine Art 020 7443 5990 18

**Talisman Fine Art** 077 6457 8130 p17  
 Tanya Baxter Contemporary 020 7351 1367 20  
 Tate Britain 020 7887 8888 21

Tate Modern 020 7887 8888 27  
 Tate St Ives 01736 796226 10  
 Tegfryn Gallery 01248 715128 6  
 Thackeray 020 7937 5883 19  
 The Art Room 077 1848 0604 11,p51  
 The Cello Factory 27  
 The Chapel Arts 077 7193 1191 8  
 The Gallery Hastings AF 01424 201636 15  
 The Infinite Gallery, Rosemary Clunie p17  
 The Lightbox 15  
 The London Sketch Club 20  
 The New Gallery, Portscatho 01872 580445 9  
 The Ropewalk 4  
 The Scottish Gallery 0131 558 1200 3  
 The Whitley Art Gal. 00 353 1 282 9915 p17  
 Thelma Hulbert 01404 45006 11  
 Thompson's Gallery 020 7935 3595 22  
 Tom Merrifield Gallery 020 7794 0343 18  
 Town Mill Galleries 11  
 Tregony Gallery 01872 530505 9  
 Tribal Art London 079 3916 6148 26  
 Trinity House 020 7499 8958 24  
 Twenty Twenty 01952 727952 7  
 TZB Southbourne 01202 426967 11

**U**cheldre Centre 01407 763361 6  
 United Society of Artists 27

**Victor Arwas Gallery** 020 7499 2658 p17  
 Victoria and Albert Mus. 020 7942 2000 21

**Water Street Gallery** 01706 839714 4  
 Waterhouse & Dodd 020 7734 7800 24  
 Wenlock Fine Art 01952 728232 7  
 West Street Gallery 077 1453 5435 26  
 White Cube 020 7930 5373 25,27  
 Whitford Fine Art 020 7930 9332 25  
 Willer 020 7937 3518 19  
 Will's Art Warehouse 020 8246 4840 17  
 Woodbine Contemporary 01406 330693 16  
 Woolff Gallery 020 7631 0551 22

**Yew Tree Gallery** 01736 786425 9

**Zuleika Gallery** 25

# SUBSCRIBE

*to art*

## GALLERIES

magazine

for national  
 art shows  
 & exhibitions

To subscribe go to  
[galleries.co.uk/subs](http://galleries.co.uk/subs)



or call  
**020 8237 1180**

■ **GALLERIES** mailed  
 to you monthly

■ hundreds of listings  
 revised each month

■ wide ranging editorial  
 and fullest information  
 in the print edition

■ £28 for 12 issues UK  
 Artist Trade / Friend £24  
 EU £56.40. USA £69. World £69

Barrington Publications  
 Riverside Studios, 65 Aspenlea Road  
 London W6 8LH

### GALLERIES digital edition

Galleries is available as a digital version at [www.galleries.co.uk](http://www.galleries.co.uk)

Archived digital access is available on request and printed back copies are priced according to scarcity starting at £12 a copy.

Galleries has an editorial bibliography database dating from the first issue, June 1983. Researchers can request information on authors, shows, galleries, or artists by email or phone, access is priced according to the request. Social Media: all openings listed in Galleries are tweeted to the magazine's 7.5K followers and posted on facebook +1K likes, on a day to day basis.

### GALLERIES artist websites, press releases

The Galleries website at [www.galleries.co.uk](http://www.galleries.co.uk) hosts additional information and pages not found in the printed edition. Press releases indexed at [galleries.co.uk/pr](http://galleries.co.uk/pr) have upfront information on forthcoming exhibitions, artists' website links show representative imagery, and the monthly openings diary is also indexed by artist/exhibition title. The site is fully searchable through the digital edition and search engine.



lithograph, 1938, 46 x 61.5 cm

# Vanessa Bell The Schoolroom

Vanessa Bell's famous original lithograph *The Schoolroom* was printed for the renowned Contemporary Lithographs Ltd series in 1938.

We have a small number of near-mint copies at £2,950\* phone us or view and buy online

Vanessa Bell was a key member of the Bloomsbury group and interest in her work continues to grow, with a major exhibition recently at the Dulwich Picture Gallery.

\*We have seen it selling for as much as £4,000 in London.