



EXPRESSION

JOHN HUBBARD
PATRICK JONES
CHRIS PRINDL

EXPRESSION brings together the work of veteran painters' John Hubbard and Patrick Jones and the ceramicist Chris Prindl.

They all have connections to the USA and currently live in the South West of England.

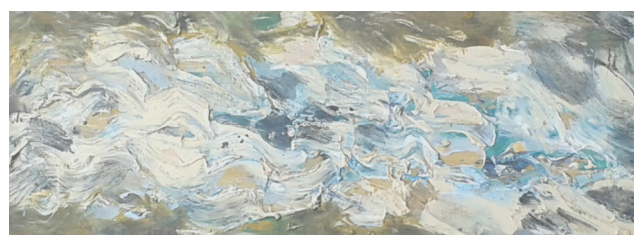
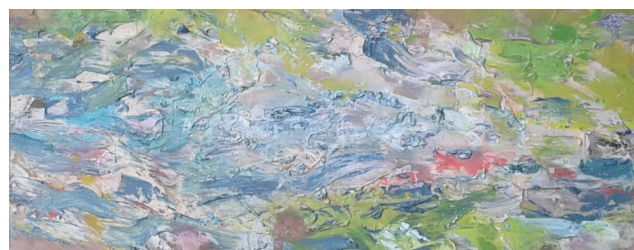
The paintings in this exhibition evoke the essence of coastal waters and although they were produced many decades apart they are united by a shared experience and cultural influences.



John Hubbard was born in Connecticut, USA in 1931, he read English at Harvard before going to Japan, where he served in the United States army. In 1956 he studied at the Art Students League, New York and at Provincetown, Massachusetts with Hans Hofman. He has lived in Dorset since 1961, and his work can be found in major public collections worldwide.

Since the 60's Hubbard has concentrated on a kind of painting which goes beyond the depiction of appearance, alluding to natural forms, to the rhythms of growing things and recreating the experience of being in a particular place.

This selection of paintings were produced between 2001 and 2002, *Foaming* has never reached the eyes of an audience outside the studio, so a rare opportunity for Hubbard aficionados.



Patrick Jones was born in England in 1948, and studied at Exeter, Gloucestershire and Birmingham Colleges of Art, before taking a Masters in Fine Art at the Maryland Institute in the United States. He now lives and works from his Devon studio and continues to exhibit internationally.

In 1982 he took part in the Triangle Workshops in New York and was chosen by Clement Greenberg for the Triangle New York exhibition, meeting and working alongside Larry Poons, Helen Frankenthaler, Jules Olitski and many other influential artists.

This collection of paintings are part of a series produced in his London studio in 1982, directly after the Triangle Workshop. They are an expression of *being in* the visible world, subconscious images and experiences filtering through to the canvas. They were exhibited in 1983 in Greenwich to a distinguished audience including Sir Anthony Caro, John Hoyland and Clement Greenberg. The majority of paintings from this period are now in private collections worldwide.



American ceramicist **Chris Prindl** was born in Frankfurt in 1968, he has lived in Sussex and Japan, moving to Cornwall 20 years ago.

Chris Prindl first started making pots in 1987 with Toshiko Takaezu while at Princeton University. After graduating he went to Japan as an apprentice with Takao Okazaki in Yamagata. He lived and worked with the Okazakis for 2 years and was introduced to many Japanese ceramic techniques and styles.

Over the last decade his work has developed in many directions. At the same time as making increasingly monumental bowls, jars and Moon Jars of late, he has produced the finest pieces in porcelain. These delicate bowls, dressed in their tantalizing glazes are a feature of the exhibition.

EXPRESSION has been devised especially for Town Mill Gallery by Deborah Wood from The Art Room. Wood is an experienced arts professional who has been facilitating exhibitions in the South West since 1989 when she was Manager of Spacex Gallery, Exeter. The Art Room was opened in 2008 and gained a reputation for high quality exhibitions by leading artists/educators with links to the region. Wood currently operates as an independent curator and web based gallery.

The Town Mill Gallery is run by a membership organisation founded in 2010, and provides an accessible exhibition space for local artists and makers.

Saturday 30th July to Tuesday 16th August

Open 10.30 – 4.30 pm each day

**Malthouse Gallery, Town Mill, Lyme Regis,
Dorset, DT7 3PU**

For further information please contact Deborah Wood, theartroom@eclipse.co.uk