



## Six Centuries of Art for Sale

Press Release

December 2015

The Works on Paper Fair will be held at the Royal Geographical Society on Exhibition Road, South Kensington (SW7), from Thursday 11- Sunday 14 February 2016. The Fair brings together around 50 art dealers from across the UK and Europe to sell all types of art on paper, from the last six centuries. Drawings, prints, watercolours, photographs and posters are shown, from the Early period through to Victorian, Modern and Contemporary. All works of art are vetted by a committee of museum experts.

During the Fair there will be an exciting programme of talks, including Colin Wiggins, Special Projects Curator at the National Gallery on prints and printmaking; and Simon Schama on *'The Face of Britain: The Nation through its Portraits'*. Combining his two great passions, British history and art history, Schama's extraordinary storytelling reveals the truth behind the nation's most famous portrayals of power, love, fame, the self, and the people.

Running alongside the Fair will be a rare chance to view unseen drawings and paintings by author Laurie Lee, on loan from his daughter Jessy Lee. Laurie Lee is most famous for his semi-autobiographical novel *Cider with Rosie*, but it has recently been discovered that he was also a prolific and talented artist. (See separate press release for further details). Jessy Lee and exhibition curators Derek Newman and Harry Moore-Gwyn will be conducting a panel discussion, to further explore *'Laurie Lee - The Artist'*.

The Fair is unique in that it is the only art fair to offer works exclusively on paper, allowing viewers a highly focused yet varied selection within the field. The Fair will offer the chance to view and purchase from arguably the highest concentration of quality works of art on paper in the UK.

Particular works of interest will include:



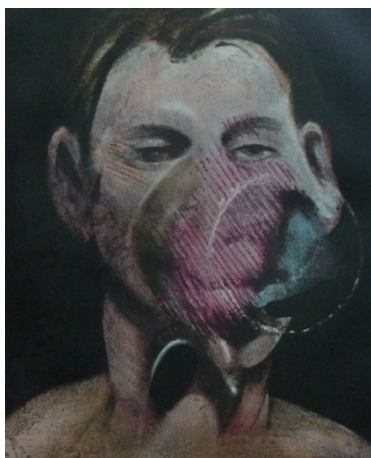
Dame Laura Knight (1877 - 1970)  
A Circus Pony  
Watercolour and gouache  
55.9 x 76.2 cm  
£28,000  
Dealer - Kaye Michie



Clifford Fishwick (1923 - 1997)  
Hills and Fields Dartmoor  
Watercolour and gouache  
21 x 30 cm  
£1,450  
Dealer - Oriel Fine Art



Jan Both (1615/18 - 1652)  
Ponte Molle  
Etching  
19.8 x 27.5 cm  
£500  
Dealer - Elizabeth Harvey-Lee



Francis Bacon (1909 - 1992)  
Peter Beard  
Etching with aquatint  
26.5 x 22.6 cm  
£14,600  
Dealer - The Whitley Art Gallery



Alexander Amanita  
Yerashov  
Untitled 2 Oil Series  
India ink pen  
60 x 80 cm  
£4,000  
Dealer - Roza Azora Gallery



Laurie Lee (1914 - 1997)  
Self Portrait  
Gouache  
56 x 38.4 cm  
Loan Exhibition ©Jessy Lee

## Notes to Editors

**Event:** Works on Paper Fair

**Location:** Royal Geographical Society, South Kensington, SW7

**Dates:** Thursday 11 - Sunday 14 February 2016

**Website:** [www.worksonpaperfair.com](http://www.worksonpaperfair.com)

**Email:** [info@worksonpaperfair.com](mailto:info@worksonpaperfair.com)

**Telephone:** 01798 215 007

**Ticket Price:** Adults: £15, 14 - 21 years: £7.50, under 14 years old: free

For more images or for high resolution images please contact: [press@worksonpaperfair.com](mailto:press@worksonpaperfair.com)

## Exhibiting Dealers

Abbott and Holder • Babbington Fine Art Percy Barks • Baron Fine Art • Chris Beetles Gallery  
Beside the Wave • Blondes Fine Art • Camburn Fine Art • Marcus Campbell Art Books • The  
Canon Gallery • Sarah Colegrave • Coombe Gallery • Maurice Edward Dear • M J Forster Gallery  
• Martyn Gregory • Hanga Ten • Elizabeth Harvey-Lee • Gwen Hughes Fine Art • John Iddon Fine  
Art • Francis Iles Gallery • Kevis House Gallery • John Lloyd Pictures • The Lost Tribe • James  
Mackinnon • Manning Fine Art • Maritime Originals • Kaye Michie • Freya Mitton • Harry Moore-  
Gwyn • Newman Fine Art • Charles Nugent • Stephen Ongpin Fine Art • Oriel Fine Art • Michael  
Parkin Fine Art • Guy Peppiatt Fine Art • Crispian Riley-Smith Fine Arts • Roza Azora • John  
Robertson Fine Art • Rountree Tryon Galleries • Neil Schofield • Vera Schumacher Fine Art • John  
Sheppard & Stephen Welbourne Fine Art • David Simon Contemporary • Sorrell, Roxby Bott and  
Treloar, RWS • John Spink • The Tolman Collection London • The Whitley Art Gallery • Zuleika  
Gallery

## Vetting committee:

Guy Peppiatt - Chairman (Guy Peppiatt Fine Art) • Dendy Easton (Picture Consultant, Bonhams)  
• Neil Jennings (Jennings Fine Art) • Robert Kennan (Head of Modern and Contemporary  
Editions London at Phillips de Pury & Company) • Anne Lyles (former curator, Tate Gallery) • Huon

Mallalieu (Sale Room Correspondent, Country Life Magazine) • Jane McAusland (Works on Paper Conservator) • Harry Moore-Gwyn (Harry Moore-Gwyn British Pictures) • Charles Nugent (former Curator of Drawings and Watercolours, Whitworth Art Gallery) • John Robertson (John Robertson Fine Paintings) • Margaret Timmers (former Head of Prints, V&A)



The Works on Paper Fair, run by Hodgson Events, is being held at the Royal Geographical Society (with the Institute of British Geographers), 1 Kensington Gore, London SW7 2AR