

# GALLERY PANGOLIN

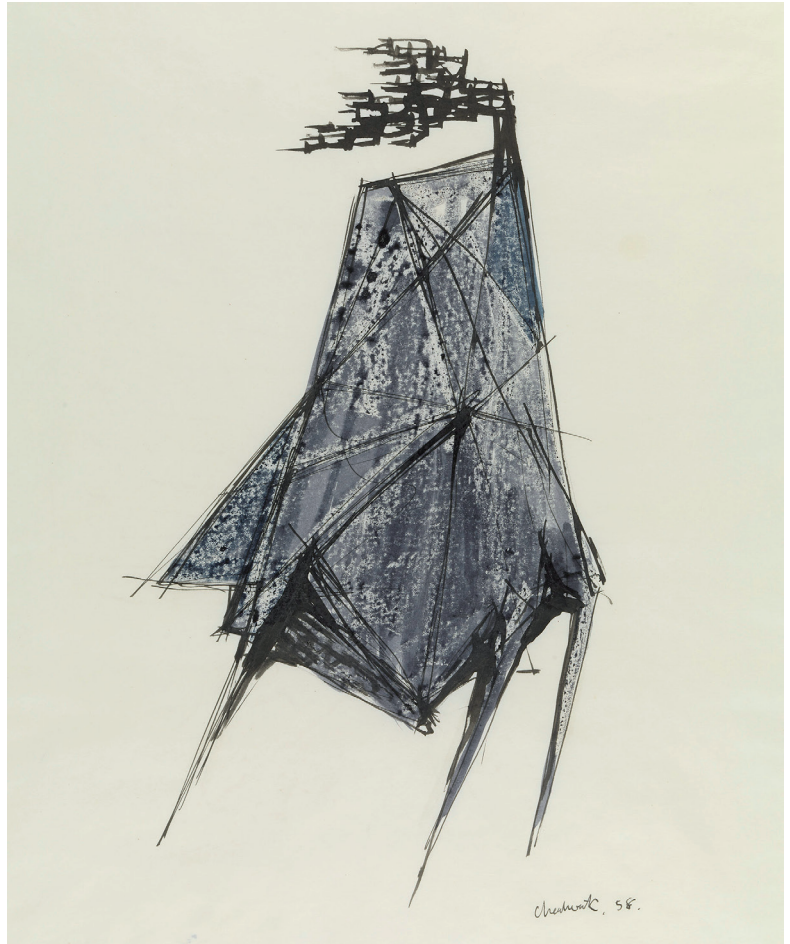
## Lynn Chadwick

### *draughtsman*

26th September - 6th November  
2015

■ Tucked away in the village of Chalford on the slopes of the Cotswold escarpment, Gallery Pangolin is one of the few galleries to specialise in sculpture and related works on paper. Over the past twenty-four years the gallery has established a reputation for works of quality and excellence by Modern and contemporary artists.

■ Despite Chadwick's well-established reputation as one of the most important Modern British sculptors, **'Lynn Chadwick: draughtsman'** is the first major exhibition to focus on his mastery of line in two dimensions.



Study for Seasons 1958

■ Early employment as an architectural draughtsman in Rodney Thomas' studio gave Chadwick a career-long interest in structure and a fascination with the way in which architecture, design and art can interact.

■ The exhibition brings together an impressive collection of drawings, including **'Teddy Boy & Girl IV' 1955** and **'Teddy Boy & Girl V' 1955**, first shown at the 1956 Venice Biennale, where Chadwick was awarded The International Prize for Sculpture.

■ Chadwick employed an impressive range of techniques and media in order to create different effects in his two-dimensional work: bold, spiky ink lines in **'Study for Dance' 1957**, subtle monochrome ink and wash in **'Study for High Wind' 1980**, innovative use of wax-resist with coloured wash and ink in **'Study for Beast' 1958**, lively, expressive woodblock monoprints and surprisingly bright colour with linear ink details in **'Standing Man' 1961**.

# GALLERY PANGOLIN

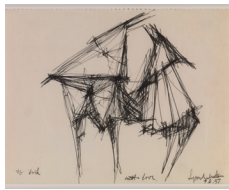
## Lynn Chadwick

*draughtsman*

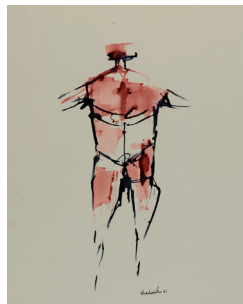
26th September - 6th November  
2015

■ A fully illustrated catalogue accompanies the exhibition, with an insightful introduction by Rungwe Kingdon, Chadwick's bronze founder since 1982.

*"The drawings give us a beautiful and intimate glimpse into Chadwick's making process. Famously private, few people were ever allowed access to his studio during work time. However, in the vigour and directness of his drawings and graphic work we are involved in Chadwick's thinking process and his visual language."*



Study for Dance  
1957



Standing Man  
1961



Study for Beast  
1958



Study for Sculpture  
(Conjunction) 1958



Study for High Wind  
1980

For further information please contact Sally James or Jane Buck on **01453 889765**

The Gallery is open Monday to Friday 10am to 6pm and Saturday 10am to 1pm



GALLERY PANGOLIN  
9 CHALFORD IND ESTATE CHALFORD GLOS GL6 8NT  
TEL 01453 889765 FAX 01453 889762 EMAIL [gallery@pangolin-editions.com](mailto:gallery@pangolin-editions.com)  
[www.gallery-pangolin.com](http://www.gallery-pangolin.com)