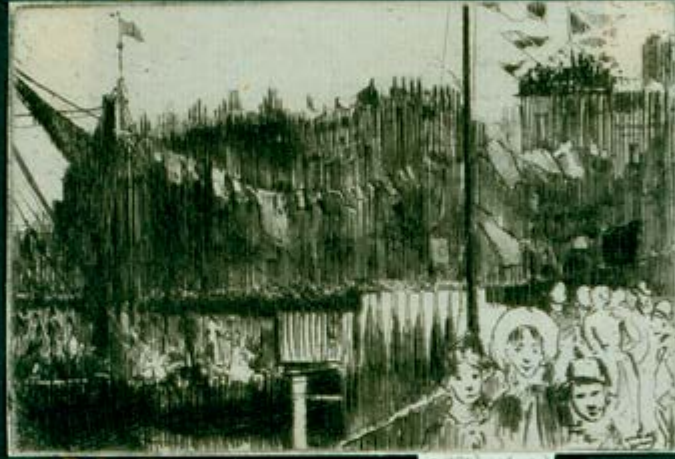


John Martin Gallery Chelsea
— *Vernissage*

31 January – 22 February 2014



Theodore Roussel (1847 - 1926)
Chelsea Regatta (1889 - 1890)
Etching, signed and inscribed. Courtesy Fine Art Society

John Martin Chelsea
— *Vernissage*

John Martin is delighted to announce the opening of a new gallery space at 80 Fulham Road, Chelsea. Designed by Johanna Molineus Architects and under the direction of Ali Langdon, the gallery will introduce the work of new international artists alongside exhibitions of established contemporary and 20th Century painters and sculptors. With a busy programme of short shows, Saturday morning artist talks and events, the gallery will seek to capture something of the spirit of Chelsea's great artistic legacy. Appropriately the new space opens on Friday 24th January with its first exhibition entitled *Vernissage*, a contemporary tribute to the Chelsea of Whistler, Rossetti, Roussel and the Greaves brothers. Including work by John Caple, Andrew Gifford, Colin Watson, Melita Denaro, Andrew Gadd, Makiko Nakamura, Uwe Walther, Maurizio Garrido, Leon Morrocco, Josh Dorman, Barry McGlashan, Gennadii Gogoliuk, Neale Howells, Richard Cartwright, Margaret Corcoran, and Martin Finnin.

For images and press information please contact Ali Langdon



John Martin Gallery Chelsea

80 Fulham Road
London, SW3 6HR

e-catalogue available
www.jmlondon.com

Tel: 020 7590 9991
info@jmlondon.com