

Press Release

Kit Glaisyer – The Cinematic Landscape

Octagon Gallery, Milsom Place, Milsom Street, Bath BA1 1BZ

19/11/13 to 01/12/13

Rising art star Kit Glaisyer will be exhibiting his remarkable West Dorset landscape paintings at the Octagon Gallery in Milsom Place, Bath from Tuesday 19 November to Sunday 1 December 2013.

Glaisyer featured in the Portrait Prize at the Holburne Museum in 2012 and he is delighted to return to Bath for a 10-year retrospective of 40 Landscape paintings at the Octagon Gallery in Milsom Place this November. It will also be a rare opportunity to see a number of works that have kindly been loaned back from private collections. The exhibition will include an installation of a working studio and there will be a daily live performance by the artist working on several paintings in progress - offering visitors a unique glimpse into the creative process.

Based in Bridport, West Dorset since 1998, Glaisyer has dedicated himself to exploring the distinctive local landscape through a series of panoramic vistas, winding paths and shadowy woods. He is one of a new generation of painters that is reinventing the landscape genre – in his case bringing a contemporary twist to a contemplation of the sublime and to the traditional romantic landscape. Glaisyer grew up in an isolated village in North Dorset, and his works evoke childhood memories of an ancient land, rolling hills, deep valleys, snaking trees and rugged farmland. His work transports the viewer into a heightened relationship with the West Country - a dreamscape where light, darkness and the transcendent character of nature are embraced.

Glaisyer says “I’m really excited to be bringing my complete body of West Dorset landscapes into the heart of Bath. I’ll be getting back some major works for the show, including paintings that took me eight months to complete, so it’s going to be an immersive and emotional journey through ten years of living in the country.”

Kit Glaisyer is a leading figure in the vibrant Bridport art scene and published the book “Portrait of the Artist – 25 Bridport Painters & Sculptors” in 2010. He is also the Director of the annual Bridport Open Studios event and is Co-Chair of the Spirit of Bridport group. He also features in a recent video on “[Art & Culture](#)” in Bridport.

‘Kit Glaisyer – The Cinematic Landscape’ will be showing at the Octagon Gallery, Milsom Place, Milsom Street, Bath BA1 1BZ from Tuesday 19 November to Sunday 1 December 2013, open daily from 10am to 6pm. During the exhibition there will be an artist’s talk and a new Catalogue of works will be available to buy.

Telephone: 07983 465789

website www.kitglaisyer.com

Twitter: @kitglaisyer

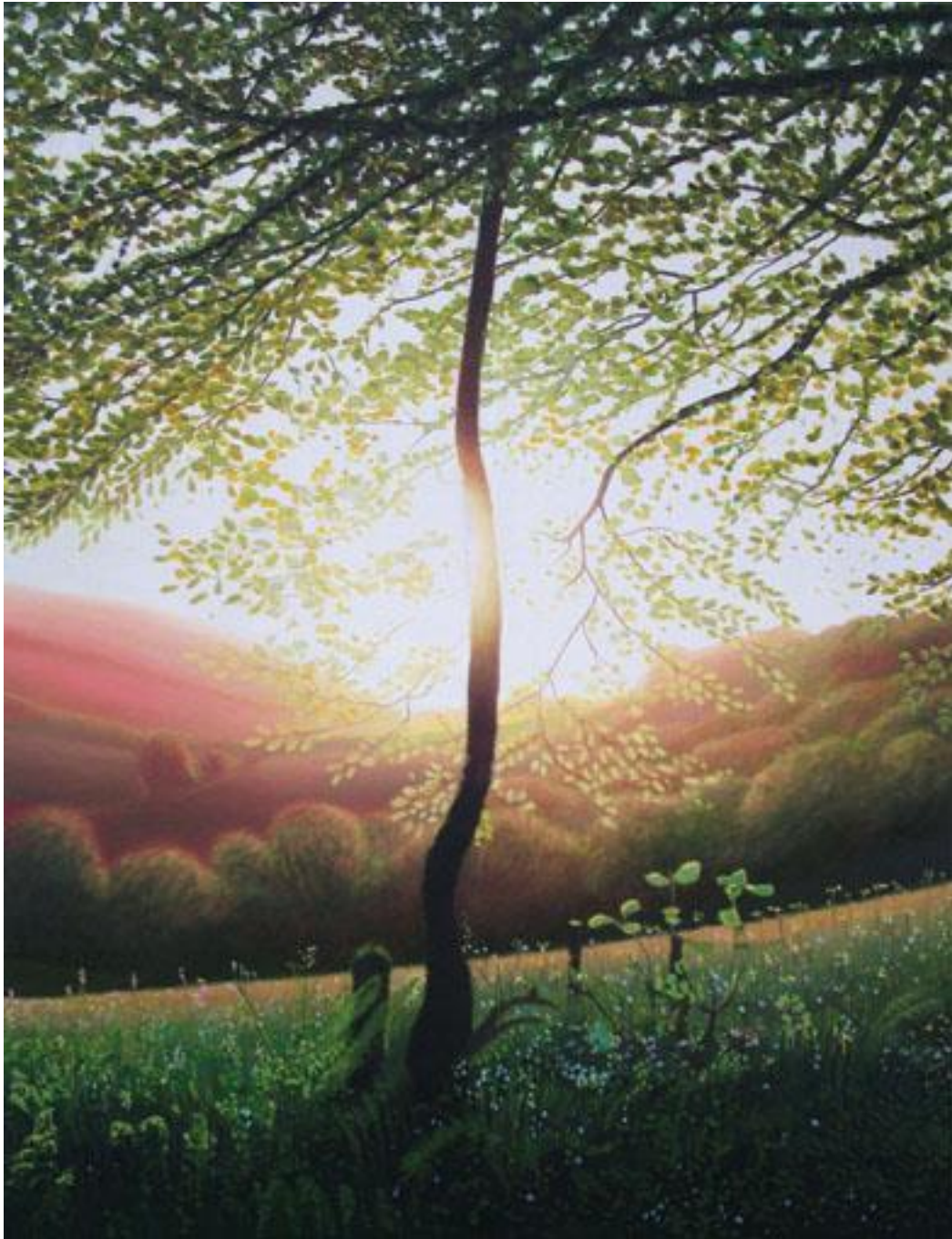


Image: "Young Tree on Lewesdon Hill", oil on flax, 42"x56", 2009-10

(High-resolution images available on request)