

Press release June 2013

## Surrey Artists Open Studios summer event

8-23 June 2013

[www.surreyopenstudios.org.uk](http://www.surreyopenstudios.org.uk)

saosandopenstudios@yahoo.co.uk

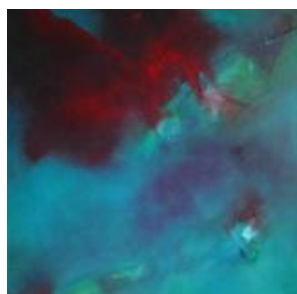
Call 01483 519285 for a brochure

Surrey Artists Open Studios offers the public a unique opportunity to visit artists studios, meet artists & makers, view demonstrations, explore and buy original artwork, enter our free prize draw, view taster exhibitions and take part in creative workshops. Studio locations are throughout Surrey and around its borders.

**This summers open studio event will have more studios than ever with many new exciting artists participating.** There is such a diverse variety of work including print-making, jewellery, ceramics, textiles, painting, wood-turning, sculpture, illustration, glass work and much more.

**Our website offers a fantastic resource: an online interactive map** where you will be able to find studios taking part and to easily plan your visit with the touch of a button. Pick up a brochure at one of our Surrey libraries or arts venues.

**Highlighted artists include:** Abstract painter **Jill Bellamy** uses vivid colour combinations together with different textures and marks to create images which tend to evoke a feeling of movement with different moods. Jill will be showcasing her work as part of ShedArt, a dynamic working co-operative of contemporary artists based in Newdigate.



**Ceramicist Ali Tomlin** will be showcasing her work as part of a group of artists based at Shalford Mill. Ali creates one-off, contemporary mostly thrown ceramics often using simple blocks of colour to contrast the clean white porcelain forms.

**Jeweller Liz Hancock** will be showcasing her work, as part of a group of 7 artists, at the Artful Gallery in Haslemere. Liz works mainly in silver and uses gem stones and gold, as well as a combination of textured and plain pieces of silver creating bold jewellery.

**Artist Dorothea Kramer-Jones** will be opening her garden studio in Oxshott. Dorothea creates mixed media landscapes, photographic portraiture, abstract paintings and video art- often characterised by vibrant colour.



For a taster of what all these artists have to offer please visit Find A Surrey Artist on our website: [www.surreyopenstudios.org.uk](http://www.surreyopenstudios.org.uk)

**We feature all of our open studios artists and more on our online resource:**

[www.surreyopenstudios.org.uk](http://www.surreyopenstudios.org.uk). Here you will find listings on arts venues, galleries, other Open Studios and event listing from our artist members and their current workshops.

**To kick start the Open Studios event we have 3 taster exhibitions** allowing our audience the chance to view a selection of artists work from across Surrey at one venue.

The Surrey taster exhibition is at East Surrey College 7-23 May, the West Surrey Taster exhibition at Lewis Elton Gallery, University of Surrey from 30 April- 16 May and the Bourneside Gallery Taster Exhibition at the Bourneside Gallery, 1 North Street, Dorking 25 May- 7 Jul 2013.

ENDS

Contact: Caroline Jackman, Surrey Artists Open Studios coordinator

[Caroline.Jackman@surreycc.gov.uk](mailto:Caroline.Jackman@surreycc.gov.uk)

01483 519281 or 07785 917490

Image captions:

Jill Bellamy, Drift

Ali Tomlin, Striped Bowl

Liz Hancock, Pendant

Dorothea Kramer, Shepherds Delight- Mixed media landscape