

**EMILY PATRICK EXHIBITION
26 FEBRUARY - 15 MARCH 2013**

Emily Patrick today announced the dates for her thirteenth solo exhibition. This will take place at Gallery 27, Cork Street between 26th February and 15th March 2013. The exhibition will include seventy new paintings finished during the past three years.

Early copies of the catalogue will be available to the press on request from the middle of December 2012. High resolution digital images of all the paintings are available currently.

Reviews and commentary concerning her previous exhibitions can be found online at www.emilypatrick.com/comment.html.

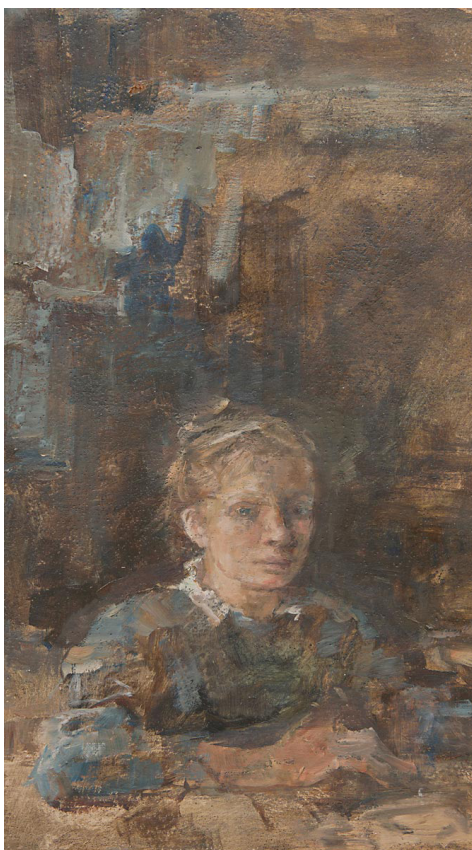
Her subjects range from intimate studies of nature, such as the centre of a dying peony to the mayhem of the London skyline. They reflect a farming childhood spent in a deep, quiet valley followed by a degree in architecture and her current home in Greenwich London.

An unusual contemporary artist, Patrick declares that she dreams of an art world that is closer to Thomas Mann's description of art, "She is bound up with the good. She is rooted in kindness which is akin to wisdom, even closer to love."

FOR FURTHER INFORMATION

Contact: Michael Perry
Telephone: +44 20 8858 0427
Mobile: +44 7785 307113

Email: michael@emilypatrick.com
Website: www.emilypatrick.com



Drawing in the Dark



Cranes above Hawksmoor



Dandelion and Parrots



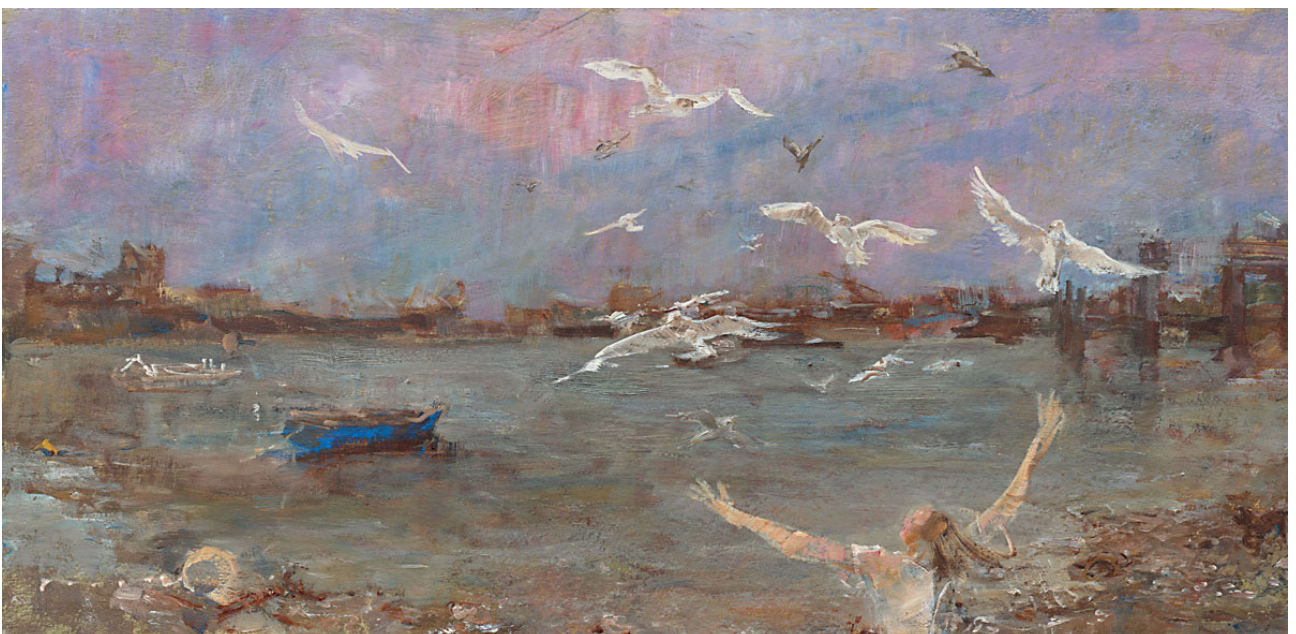
Seeding Grass near Tumuli



Still Life with Cobalts



Hyacinth below Wild Arrangement



Flight at Low Tide