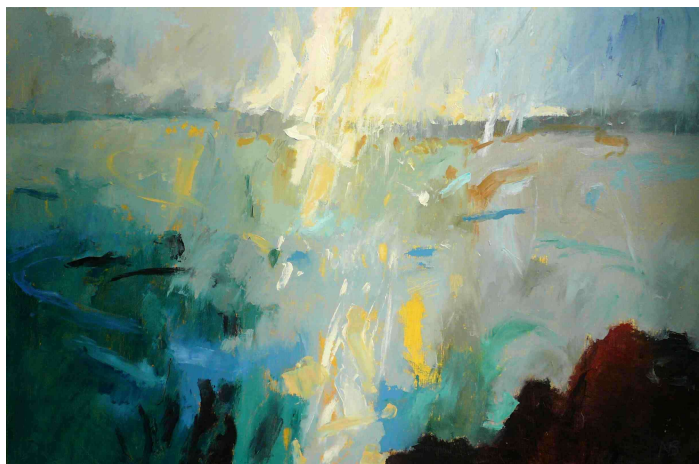


NICKY BASFORD

Drawn from Nature



From Porthminster Point, oil on canvas, 80 x 120 cm

6-10 November 2012

54, The Gallery  
Shepherd Market  
London W1J 7QX

11am – 7pm

In this, her fourth solo show, Nicky Basford presents paintings, drawings and prints made over 2 years. The natural world of landscape or the human figure provides both the inspiration and the source of her work, hence 'Drawn from Nature'. Subjects include the Cornish coast near St Ives, the Lake District, Sussex and London.

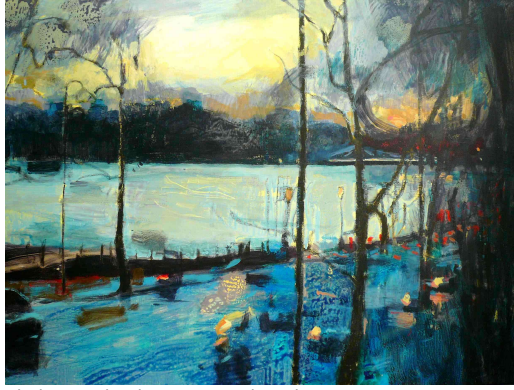
Her paintings are full of atmosphere, suffused with shimmering light, brooding skies or enveloping dusk and, although freely painted, they are underpinned by a strong understanding of drawing. She puts this discipline at the heart of her work and was recently awarded the Gyllian Foster prize for drawing at Heatherley's School of Art. As her drawing informs her landscape, so her landscape emerges out of her drawings.

In Nicky Basford, we see an artist whose versatility shows in her handling of different media. Equally confident with the palette knife or brush, oil or acrylic, drawing or printmaking, Basford's message is clear - evocation of the landscape. She leaves you with a powerful and lasting impression of what it was like to be there.

Nicky has previously shown with Belgrave St Ives, Jill George London, Toronto Art Fair, RWS, RCA, Brian Sinfield and Merriscourt Oxfordshire.

[nickybasford@gmail.com](mailto:nickybasford@gmail.com)

[www.nickybasford.co.uk](http://www.nickybasford.co.uk)



Chelsea Embankment, mixed media on canvas, 76 x 102 cm



Blue Nude Sleeping, charcoal & acrylic on paper, 84 x 60 cm



Langdale Valley in Snow, mixed media on board, 37 x 52 cm