

The Horse in Art 2012

THE SOCIETY OF EQUESTRIAN ARTISTS

Also online at:

www.equestrianartists.co.uk

MENIERGALLERY

51 Southwark Street, London SE1 1RU
www.menieryallery.co.uk
nearest tube: London Bridge

20th November – 1st December

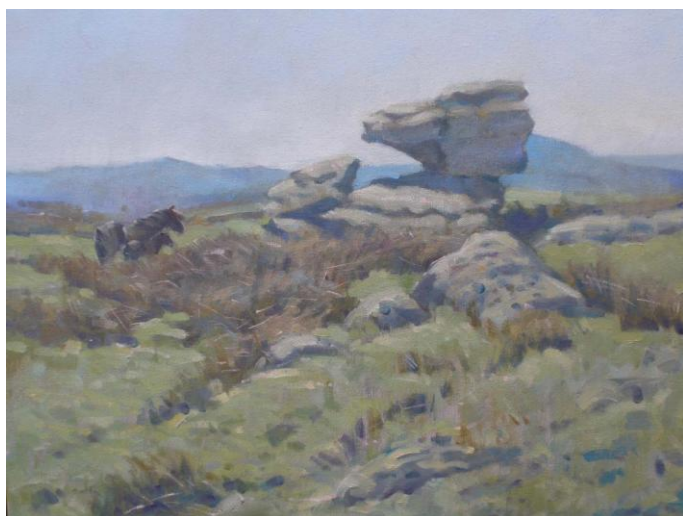
Open 11am – 6pm Daily
Fridays late until 8pm
Closed Sunday 25th
Ends Saturday 1st at 2pm



The Society of Equestrian Artist exists to promote the practice of equestrian painting and sculpture and to advance the public education and appreciation of this art. The Horse in Art 2012 is the Annual Open Exhibition for the Society of Equestrian Artists. This registered charity was founded in 1979 by ten Founder Members under the chairmanship of Norman Hoad CVO CBE AFC, a notable equestrian and aviation artist.

'Coraje' Sally Martin SEA

Membership of the Society is open to all, both artists and non-artists alike, who wish to be associated with, and support the work of, the Society through joining as a Friend. Friends who are



'Open Moor' Colin Allbrook RI SEA

artists may apply for promotion to become Associate Members (ASEA). Full Members (SEA) in their turn are elected by their peers on the basis of having achieved an exceptionally high standard of work over many years of exhibiting with the Society. There are currently approximately 50 Full Members and over 450 members in total, including many based overseas.

Since it was founded, the Society's principal exhibition for member's

paintings and sculpture has been the Annual Exhibition held in London, now in its 33rd year. As part of an ongoing renewal process in order to progress the Society as THE centre of excellence for equestrian art, it became an Open Exhibition in 2010, welcoming entries from members and non-members alike.

This year's exhibition has attracted well in excess of 400 entries, of which 100 have been provided by SEA's including Colin Allbrook RI SEA and Dennis Syrett PPROI RBA RSMA SEA. Works range from the traditional to the contemporary, from a life size mural by Jennifer Bell SEA, to smaller original silkscreen prints by Glynis Mills SEA.

From the up and coming Associate ranks, entries have been welcomed from Katie Scorgie ASEA, who was delighted to spend a years Residency with the Household Cavalry Mounted Regiment, which included time behind the scenes at the barracks



'First Born' Silkscreen Glynis Mills SEA

during the Royal Wedding. The resulting work was all too briefly exhibited in aid of the Household Cavalry Foundation for four days in April.



'Return From the Royal Wedding' Katie Scorgie ASEA

Michelle McCullagh ASEA will be busy this November, as she is also promoting her first solo show at the Osborne Studio Gallery, Motcombe Street, London, which runs concurrent with The Horse In Art, for which she still has time (and the work) to support. Her pieces range from sensitive studies in charcoal to the striking 'ghosting' images she produces in oils.

Also exhibiting following a Residency is sculptor Camilla Le May, recently promoted to ASEA, she became the Royal Veterinary College's first Artist in Residence and has been commissioned to produce a life-size sculpture of Sefton, which is expected to be unveiled in the spring of 2013.



'Winners Enclosure' Michelle McCullagh SEA



'Fire Storm' Vineta Sayer ASEA

School of Art and on graduation she continued her fine art studies at the Academy of Art in Riga.

The link with our equestrian artists and horse racing is strong and many of them, including Susan Crawford SEA, Roy Miller SEA and Neil Cawthorne SEA, have produced images in support of racing's great charity, the Injured Jockeys Fund.

The powerful and expressive images of Vinetta Sayer MA ASEA, will be helping to support them in 2013. Born in Latvia, though now based in Kent, the combination of her fascination with horses and artistic talent won her a place at Rozenthal's

The SEA has been well supported by the British Sporting Art Trust who for many years have sponsored the prize for Best Sculpture. Last year's winner, the Croatian Hrjove Dumančić, has participated in equestrian art exhibitions around the world including Britain, France, Italy, Hungary and the United States.



'Castor & Pollux' Hrjove Dumančić



We are lucky enough to have the pencil drawing 'Acoso Y Derribo' by Cathy Spearing SEA SWA, depicting the highly skilled movement of cattle using garrochas (blunt wooden poles). This image was

selected from over 4000 entries as a finalist in the Artists & Illustrators Magazine 'Artist of the Year 2012' competition.

The judges for the Horse in Art 2012 exhibition were drawn from the the Full Membership and from outside the Society. The selection panel for 2D work comprised of five Full Members of the Society of Equestrian Artists. Barry Peckham SEA and Sally Martin SEA were both judges in 2011 and so helped to maintain consistency and Colin Allbrook RI SEA returned after a few years absence. We were delighted to welcome 2011 Cuneo Medal winner, Rosemary Welch SEA and also Glynis Mills SEA, who had actually spent many years recording the results of judging as it took place, so she is well aware of the standard required.

They were assisted by John Baskett, a curator of the Paul Mellon Collection, author of 'The Horse in Art' and a former Chairman of the Society of London Art Dealers and Ian McIntyre, publisher and well known collector of contemporary art who has owned race horses with Peter Rossdale and three day event horses ridden by Pippa Funnell.



'Mind Your Backs!' Rosemary Welch SEA

The 3D panel comprised of Ann Baxter SEA, who had judged in the past and is a previous winner of the Cuneo Medal and the British Sporting Art Trust Sculpture Award. From outside the Society, Geoffrey Hughes, Director of the Osborne Studio Gallery, specialists in Sporting paintings and bronzes by leading contemporary artists with an emphasis on Horse Racing. We also welcomed Charles Lane, writer of many articles on Sporting Art for BSAT and a former judge on the 2D panel.

For further information, text or images, invitations to the Private View on 21st November or to order a catalogue please contact:

Debbie Burt
Honorary Secretary & Administrator
E: admin@equestrianartists.co.uk
T: 0300 0110 185
W: www.equestrianartists.co.uk
Charity No: 294729