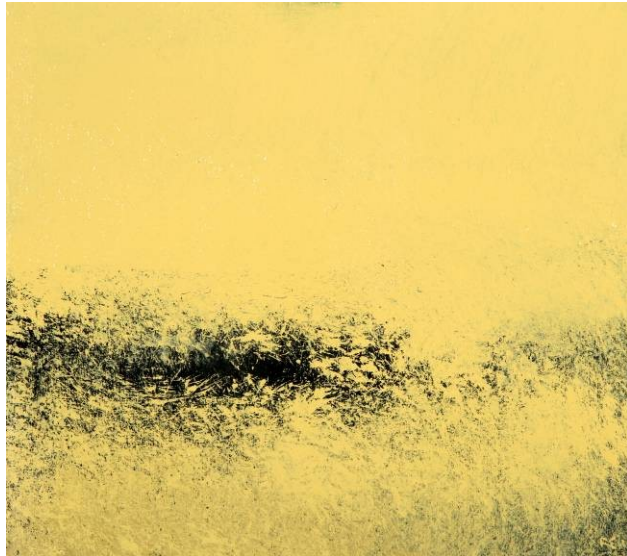


## Press Release

# Robert Eadie: Shallow Seas

27<sup>th</sup> September – 2<sup>nd</sup> October 2011

The Gallery In Redchurch Street, 50 Redchurch Street, London E2 7DP



sunrise, acrylic onboard



shallow sea, acrylic on canvas

In *Shallow Seas*, artist Robert Eadie presents over thirty canvases, including three large triptych paintings, which fill the Gallery in Redchurch Street and take the viewer on an abstract and imaginative journey through landscape. Inspired by solitary wanderings through wilderness, these paintings are a distillation of memory and emotion. Influenced by the scale and grandeur of contemporary abstract painting, and by the soundscapes of Ambient music, Eadie has reduced both form and colour to a minimum, and each painting is charged with accident, spontaneity and emotional impact.

*“In a world which has been irrevocably changed by the influence of human beings I find it consoling and calming to imagine a natural landscape which is utterly untouched by the human presence, for example one that may have existed in geological time. I am interested in trying to make paintings that evoke this sense of timeless and pristine beauty”*

Robert Eadie trained at the Byam Shaw School of Art where he won the Bateson Mason Award for Drawing, Heatherley’s School of Art and Brighton School of Art. His last solo exhibition was held in 2010 at The Air Gallery in London. He lives and works in West Sussex.

### Listings Information:

Robert Eadie: Shallow Seas, 27<sup>th</sup> Sept- 2<sup>nd</sup> Oct 2011

The Gallery In Redchurch Street, 50 Redchurch Street, London E2 7DP

[www.robteadie.co.uk](http://www.robteadie.co.uk), Email: [robert@robteadie.com](mailto:robert@robteadie.com)

Open Tues-Sat 10am – 6pm, Sun 11 – 5pm

Preview Thurs 29<sup>th</sup> Sept 6.30pm-9pm

Nearest tubes: Shoreditch, Liverpool Street, Old Street.