



**Curwen & New Academy Gallery**

34 Windmill Street, Fitzrovia, London, W1T 2JR

020-7323 4700 / gallery@curwengallery.com

www.curwengallery.com



PRESS RELEASE:

## **Brenda Hartill RE**

**03-26 February 2011**

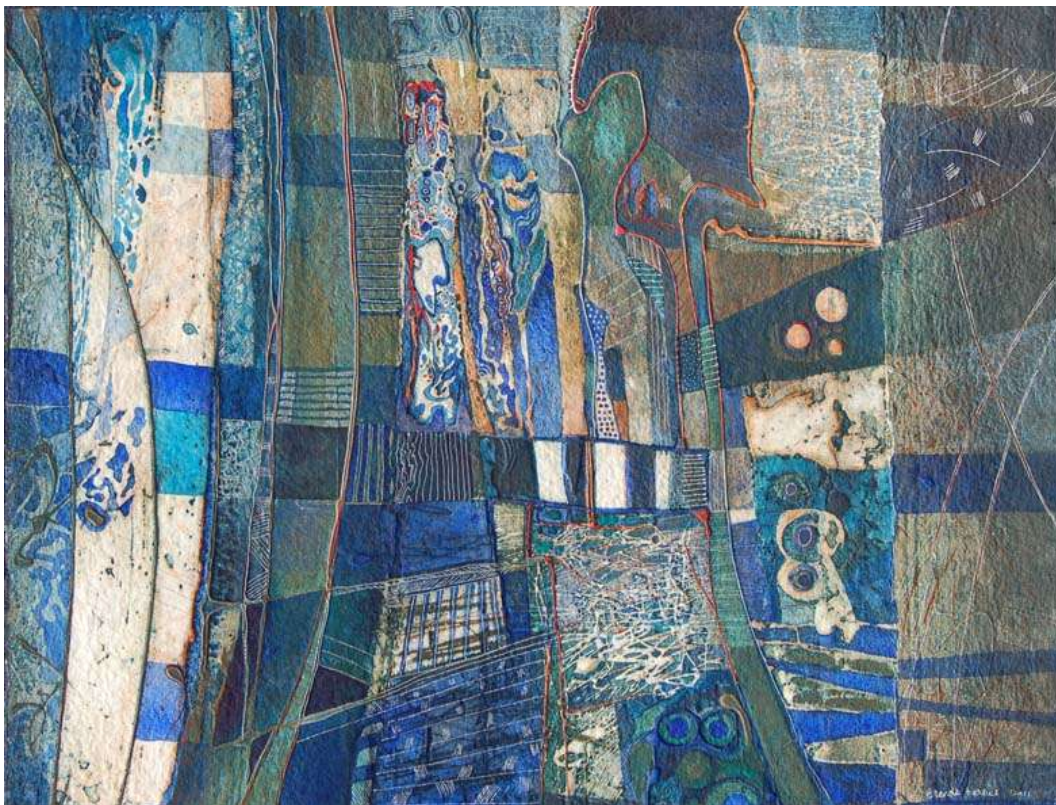
**Private view Wed 02 Feb 6-8pm**

**Brenda will be talking about her work on Tuesday 15 February 6-8pm**

Curwen & New Academy gallery have been showing Brenda's limited edition etchings and collagraphs for 20 years. For her latest exhibition, along with her prints, Brenda Hartill has produced a new series of unique watercolour paintings which combine her embossing skills with jewel-like watercolour.

Born in London, Brenda Hartill emigrated to New Zealand with her parents and was educated there, attending the Elam School of Fine Art at the University of Auckland. As a graduate she returned to London in the late sixties, on a New Zealand Arts Council grant, to attend the Central School of Art and Design.

Brenda Hartill is a fellow of the Royal Society of Painter Printmakers (R.E.) and exhibits regularly at the Bankside Gallery and the National Print Exhibition, Mall Galleries, London. She often shows in the Royal Academy Summer Exhibition, and regularly at the Curwen & New Academy Gallery, London.



**BRENDA HARTILL, *Blue Song III*, embossed watercolour 56x76cm**

**Gallery Open Mon-Fri 10-6 (Thurs 10-8), Sat 11-5. Closed Sundays & Bank Holiday Weekends**