

PRESS RELEASE

BICHA
STIMULATION
FOR THE NATION

Zoë Schieppati Emery

Objects of Desire / Adornment for the Adored, January 17 - 30, 2010

Private View: January 21, 2010 from 6.30 to 8.30pm

Bicha Gallery

7 Gabriel's Wharf, South Bank, London SE1 9PP

Award winning artist and lecturer Zoë Schieppati-Emery will be exhibiting her most recent work at Bicha gallery between the 17-30 of January 2010.

The exhibition titled *Objects of Desire / Adornment for the Adored* reveals the artist's fascination and obsession with bodies, as places to inhabit and objects to customise. An exploration of what she thinks and feels about the human body and how it is perceived. For Zoë, this is often about details, like hands or feet, and the way they are adorned and presented – 'a glove can become not only a piece of clothing, to shield a hand from contamination, but at the same time an idealised, stylised, sexualised, romanticised version of the real hand inside it'.

In her work, the artist compares the lover's hand to the artist's hand – 'the lover's hand and eye instinctively seeks to caress and know the nuances of the object of their desire, while the artist's hand and eye do the same with form, colour and texture, drawing and making' – which for Zoë becomes part of the act of knowing and in some way possessing.



She finds herself working comfortably in a space somewhere between fine art and design. This blur or collaboration of disciplines makes the artist at times unsure whether to describe herself as a fine artist or a maker, but as she puts it 'when working a definition doesn't really matter'.

Her pieces tend to be quite layered in their cultural and historical references. This is not a self-conscious decision, simply how she experiences the world, as she cannot ignore her childhood surrounded by costume and couture. The work is meant to ask questions yet unapologetically hopes to give pleasure.

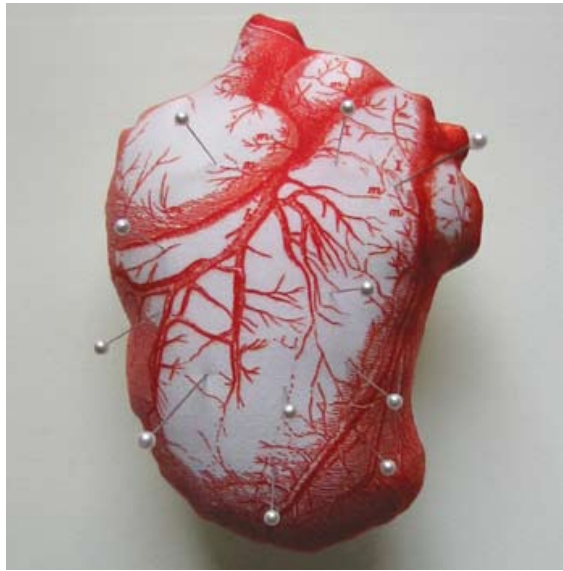
Zoë Schieppati-Emery, *Henna Hands II*, W 210 x H 300 mm , Mixed media, 2009

Bicha Gallery & Shop
7 Gabriel's Wharf
South Bank
London SE1 9PP

T +44 (0)7721 400 048
E info@bicha.co.uk
www.bicha.co.uk



Zoë Schieppati-Emery, *Origin of the Species*,
2 jars each H 285 x W 135 mm, Monoprint (mixed
media, glass jars and liquid light), 2004



Zoë Schieppati-Emery, *Pin Cushion Heart*,
H 315 x W 315 x D 140 mm, Digitally printed textile,
hand sewn, filled with kapok and millinery pins, 2002

BICHA
STIMULATION
FOR THE NATION

Bicha Gallery & Shop
7 Gabriel's Wharf
South Bank
London SE1 9PP

T +44 (0)7721 400 048
E info@bicha.co.uk
www.bicha.co.uk

Education

Post Graduate Certificate in Art & Design
Education (PGCE), 2008 Distinction
Masters Fine Art Printmaking,
Royal College of Art, 2004
Postgraduate studies in Printmaking and
Illustration, London College
of Printing 1999 – 2002
Diploma in Restoration and Conservation
of Sculpture and Decorative Arts,
City & Guilds of London Art School 1991

Awards

Printmakers Council Award 2004

Exhibitions

Affordable Art Fair, Bicha Gallery Brussels,
February 2010
Affordable Art Fair, Bicha Gallery
London, Autumn 2009
Affordable Art Fair, Bicha Gallery
Bristol, Spring 2009
Bicha Art Group Show Winter 08
Wyndham Grand Chelsea,
London 2008

Christmas Open Studio, Gas Works,
London 2008
"Nature vs Man" Troubadour Gallery,
Earls Court Festival, London 2007
Thru the Looking Glass,
Royal Albert Dock, London 2007
The Original Print Fair, Royal Academy
of Art, London 2006
Artcore Gallery, Paris 2006
Nancy Victor Gallery, London 2005
The Oxo Tower Gallery, London 2005
Morley Gallery, London 2004
The Corridor Gallery, London 2004
Final Show Royal College of Art,
London 2004
Artskool (Paris, Sea France Ferry, London)
2004
Southwark Café Gallery, London 2004
Express (RCA Touring Exhibition) 2003
Robert Hooke, Royal Society/National Portrait
Gallery, London 2003
Atrium Gallery, London 2002
RK Burt Gallery, London College
of Printing, London 2000 & 2001

For further information, text or images, please contact António Capelão.
Bicha Gallery, 7 Gabriel's Wharf, South Bank, London SE1 9PP
Gallery +44 (0)20 7928 0083 | E antonio@bicha.co.uk | www.bicha.co.uk
Open Tuesday through Sunday from 11am till 7pm

Bicha Gallery | Zoë Schieppati Emery January 17 – 30, 2010
020 7928 0083, 7 Gabriel's Wharf, South Bank, London SE1 9PP | 11 am - 7pm Tues-Sun
Tube: Waterloo, Embankment, Covent Garden, Southwark.