



**(a) THE COLOMB ART GALLERY**

52A George Street, Marylebone, W1U 7EA  
**Gallery Show.** Nov 17 until January.  
**Pip McGarry:** Christmas Small Picture Show. Dec 2–17. Small paintings with big personalities from leading wildlife artist. In the Upper Gallery.  
*Gallery hours Mon–Fri 9.30–5.30, Sat 10–5, admn free*  
[info@colombart.co.uk](mailto:info@colombart.co.uk)  
[www.colombart.co.uk](http://www.colombart.co.uk)  
 t 020 7487 5118

**(b) CREATIVE PICTURE FRAMING**

81 Baker Street, W1U 6RQ  
 Contemporary **Paintings and Prints.**  
 Professional onsite framing service.  
*Mon–Fri 9.30–6, Sat 10–5*  
[info@creativepictureframing.co.uk](mailto:info@creativepictureframing.co.uk)  
[www.creativepictureframing.co.uk](http://www.creativepictureframing.co.uk)  
 t 020 7935 7794

**(c) INDAR PASRICHA FINE ARTS**

22 Connaught Street, W2  
**Lilah Wingfield (1888–1981):** Photographs of the 1911 Delhi Durbar. Dec 12–17. To mark its centenary and to accompany the publication of 'Glimpse of Empire' by Jessica Douglas-Home.  
[info@glimpseofempire.com](mailto:info@glimpseofempire.com)  
[www.indarpasrichafinearts.com](http://www.indarpasrichafinearts.com)  
 t 01285 750624

**(d) MARK GALLERY**

9 Porchester Place, Marble Arch, W2 2BS  
**16th–19th Century Russian Icons.** Also modern lithographs and etchings from the Ecole de Paris, including Picasso, Chagall, Dali, Miro, Fini, Cassaigneul, etc. Members of BADA and CINOA.  
*Mon–Fri 10–1, 2–6, Sat 11–1*  
[info@markgallery.co.uk](mailto:info@markgallery.co.uk)  
[www.markgallery.co.uk](http://www.markgallery.co.uk)  
 t 020 7262 4906 f 020 7224 9416

**(e) RAILINGS GALLERY**

5 New Cavendish Street, W1G 8UT  
**Original limited edition prints** by contemporary artists. Innovative **picture framing and exhibition framing.**  
*Mon–Fri 9.30–6, Sat 10–5.30*  
[info@railings-gallery.com](mailto:info@railings-gallery.com)  
[www.railings-gallery.com](http://www.railings-gallery.com)  
 t 020 7935 1114 f 020 7486 9250

**(f) THOMPSON'S GALLERY**

15 New Cavendish Street, W1G 9UB  
**David Sawyer:** The Cambridge Colleges. Nov 28–Dec 24.  
*Mon–Fri 10–6, Sat 10.30–5.30, Sun 11–5*  
[enquiries@thompsonsgallery.co.uk](mailto:enquiries@thompsonsgallery.co.uk)  
[www.thompsonsgallery.co.uk](http://www.thompsonsgallery.co.uk)  
 t 020 7935 3595

**Galleries** magazine, published since 1983, promotes commercial and public art shows and exhibitions in the UK and Ireland using editorial, maps, listings and referenced indexes to show clearly, concisely and in greater detail who is showing what, when and where.

Barrington Publications  
 Riverside Studios, Crisp Road  
 London W6 9RL  
 T: 020 8237 1180

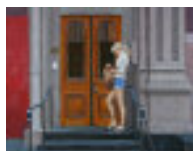
[www.galleries.co.uk](http://www.galleries.co.uk)

**Enid Lawson Gallery**  
 (see London, City Map)

We have moved!  
 Please come and see us in our lovely new location.

Great New Street  
 New Street Square  
 London EC4A 3BN  
 020 7538 9499/ 07850 214407

(pedestrian access is off New Fetter Lane. Nearest stations are Chancery Lane, Farringdon and City Thameslink)



SEE LISTEN READ